

ISSUE DATE: 07/27/94 - 06:56

PDT: 0 1 2 3 4 5 6 7 8 9 10 11 12 13 14 15 16 17 18 19 20 21 22 23 0

THURSDAY
JULY 28, 1994
209-210

VGR STAFF/A148
VCB/MD MTG/A148

UTC: 7 8 9 10 11 12 13 14 15 16 17 18 19 20 21 22 23 0 1 2 3 4 5 6 7

RTLTL : 15h 32m 42s

1200 RTLTL=15h 32m 54s

0000 RTLTL=15h 33m 4s

VOYAGER 1

FDSL : 11AF

CCSL : A019
TWNC : ON
SB : OFF XB : LOW
PYR : .05/ .10/ .25
GYROS : OFF

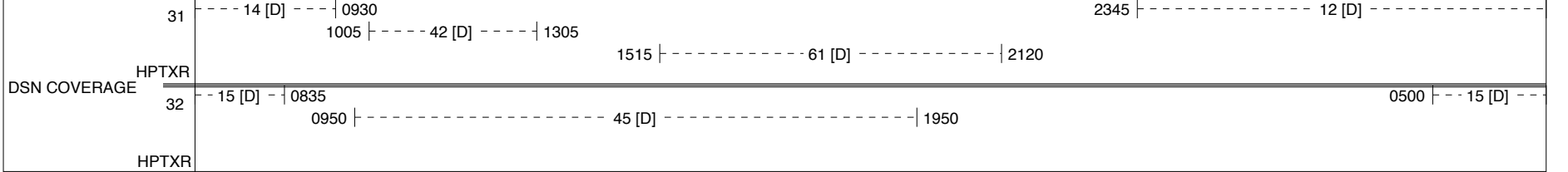
0703 SLEW-> SUN +1 EL
↓ 0747 SLEW->2 DELTA EL ACROSS SUN
0747 | 0804 SUNMON
↓ 0756 SLEW->+2 DELTA EL ACROSS SUN
↓ 0805 SLEW->SAFE

S/C 31 STATUS
FDS CLOCK DRIFT:
ADD TO S/C EVENT
ERT: -1.882 sec
SCAN PLAT POSITION:
AZ = 200.009 deg
EL = 39.997 deg
ROLLREF = RIGIL
KENTAURUS

FDS MODE
XB DATA RATE (MI)

0808
UV-5A
600(36)

CR-5T
160(32)



RTLTL : 11h 48m 16s

1200 RTLTL=11h 48m 24s

0000 RTLTL=11h 48m 30s

VOYAGER 2

FDSL : 11AF

CCSL : B022
TWNC : ON
SB : OFF XB : LOW
PYR : .05/ .10/ .25
GYROS : OFF

S/C 32 STATUS
FDS CLOCK DRIFT:
ADD TO S/C EVENT
ERT: 3:45.546 min
SCAN PLAT POSITION:
AZ = 210.908 deg
EL = 11.557 deg
ROLLREF = VEGA

FDS MODE
XB DATA RATE (MI)

UV-5A
600 (36)

VOYAGER COVERAGE

|----- VGR -----|

NOTES

UTC: 7 8 9 10 11 12 13 14 15 16 17 18 19 20 21 22 23 0 1 2 3 4 5 6 7

ISSUE DATE: 07/27/94 - 06:56

PDT: 0 1 2 3 4 5 6 7 8 9 10 11 12 13 14 15 16 17 18 19 20 21 22 23 0

FRIDAY
JULY 29, 1994
210-211

SCRAP/A106

UTC: 7 8 9 10 11 12 13 14 15 16 17 18 19 20 21 22 23 0 1 2 3 4 5 6 7

RTLT : 15h 33m 4s

1200 RTLT=15h 33m 16s

0000 RTLT=15h 33m 26s

VOYAGER 1

- ↓ 2335 GYROS AB ON
- ↓ 2336 GYRO INIT
- ↓ 2345 GYRO FAULT TEST

FDSL : 11AF

CCSL : A019
TWNC : ON
SB : OFF XB : LOW
PYR : .05/ .10/ .25
GYROS : OFF

FDS MODE
XB DATA RATE (MI)

CR-5T

160(32)

31 --- 12 [D] --- 0845
1000 |----- 42 [D] -----| 1430
2230 |----- 12 [D] -----|

HPTXR

1455 |----- 61 [D] -----| 1945

DSN COVERAGE

32 --- 15 [D] --- 0835
0845 |----- 45 [D] -----| 1600
2210 | 65 [D] | 2340
0450 |--- 15 [D] ---|

HPTXR

1545 |----- 43 [o] -----| 1945

RTLT : 11h 48m 30s

1200 RTLT=11h 48m 38s

0000 RTLT=11h 48m 44s

VOYAGER 2

- ↓ 1559 SLEW->JUPITER

FDSL : 11AF

CCSL : B022
TWNC : ON
SB : OFF XB : LOW
PYR : .05/ .10/ .25
GYROS : OFF

FDS MODE
XB DATA RATE (MI)

UV-5A

600 (36)

VOYAGER COVERAGE

|----- VGR -----|

NOTES

UTC: 7 8 9 10 11 12 13 14 15 16 17 18 19 20 21 22 23 0 1 2 3 4 5 6 7

ISSUE DATE: 07/27/94 - 06:56

PDT: 0 1 2 3 4 5 6 7 8 9 10 11 12 13 14 15 16 17 18 19 20 21 22 23 0

SATURDAY
JULY 30, 1994
211-212

UTC: 7 8 9 10 11 12 13 14 15 16 17 18 19 20 21 22 23 0 1 2 3 4 5 6 7

RTLT : 15h 33m 26s

1200 RTLT=15h 33m 38s

0000 RTLT=15h 33m 48s

VOYAGER 1

U/L 1105 | - | - - - - - TLC (SHORT-FORM) - - - - - | D/L - | 0407

FDSL : 11AF

CCSL : A019
TWNC : ON
SB : OFF XB : LOW
PYR : .05/ .10/ .25
GYROS : ON

FDS MODE
XB DATA RATE (MI)

CR-5T

160(32)

31 - - - 12 [D] - - - | 0920 - - - - - 2225 | - - - - - 12 [D] - - - - -

1000 | - - - - - 42 - - - - - | 1425
1455 | - - - - - 61 [D] - - - - - | 2010

DSN COVERAGE
HPTXR

32 - - 15 [D] - | 0830 - - - - - 0445 | - - - 15 [D] - - - - -

0855 | - - - - - 45 [D] - - - - - | 1940
2205 | - 65 [D] - | 2335

HPTXR

RTLT : 11h 48m 44s

1200 RTLT=11h 48m 52s

0000 RTLT=11h 49m 0s

VOYAGER 2

FDSL : 11AF

CCSL : B022
TWNC : ON
SB : OFF XB : LOW
PYR : .05/ .10/ .25
GYROS : OFF

FDS MODE
XB DATA RATE (MI)

UV-5A

600 (36)

VOYAGER COVERAGE

ON CALL

NOTES

UTC: 7 8 9 10 11 12 13 14 15 16 17 18 19 20 21 22 23 0 1 2 3 4 5 6 7

ISSUE DATE: 07/27/94 - 06:56

PDT: 0 1 2 3 4 5 6 7 8 9 10 11 12 13 14 15 16 17 18 19 20 21 22 23 0

SUNDAY
JULY 31, 1994
212-213

UTC: 7 8 9 10 11 12 13 14 15 16 17 18 19 20 21 22 23 0 1 2 3 4 5 6 7

RTLT : 15h 33m 48s

1200 RTLT=15h 34m 0s

0000 RTLT=15h 34m 10s

VOYAGER 1

FDSL : 11AF

CCSL : A019
TWNC : ON
SB : OFF XB : LOW
PYR : .05/ .10/ .25
GYROS : ON

FDS MODE
XB DATA RATE (MI)

CR-5T

160(32)

31 -- 12 [D] - | 0840

1450 | ----- 61 [D] ----- | 2045

2220 |----- 12 [D] -----

DSN COVERAGE
HPTXR

32 15 [D] - | 0825

0815 |----- 45 [D] ----- | 1935

HPTXR

RTLT : 11h 49m 0s

1200 RTLT=11h 49m 6s

0000 RTLT=11h 49m 14s

VOYAGER 2

FDSL : 11AF

CCSL : B022
TWNC : ON
SB : OFF XB : LOW
PYR : .05/ .10/ .25
GYROS : OFF

FDS MODE
XB DATA RATE (MI)

UV-5A

600 (36)

VOYAGER COVERAGE

----- ON CALL -----

NOTES

UTC: 7 8 9 10 11 12 13 14 15 16 17 18 19 20 21 22 23 0 1 2 3 4 5 6 7

ISSUE DATE: 07/27/94 - 06:56

PDT: 0 1 2 3 4 5 6 7 8 9 10 11 12 13 14 15 16 17 18 19 20 21 22 23 0

MONDAY
AUGUST 1, 1994
213-214

MD MTG/A148

UTC: 7 8 9 10 11 12 13 14 15 16 17 18 19 20 21 22 23 0 1 2 3 4 5 6 7

RTLTL : 15h 34m 10s

1200 RTLTL=15h 34m 22s

0000 RTLTL=15h 34m 34s

VOYAGER 1

FDSL : 11AF

CCSL : A019
TWNC : ON
SB : OFF XB : LOW
PYR : .05/ .10/ .25
GYROS : ON

FDS MODE
XB DATA RATE (MI)

CR-5T

160(32)

31 --- 12 [D] --- | 0855

1445 |

----- 61 [D] -----

| 1945

0005 |

----- 12 [D] -----

DSN COVERAGE
HPTXR

32

1520 |

----- 43 [o] -----

| 1920

0435 |

----- 15 [D] -----

HPTXR

RTLTL : 11h 49m 14s

1200 RTLTL=11h 49m 22s

0000 RTLTL=11h 49m 28s

VOYAGER 2

▼ 1710 DUMMY

FDSL : 11AF

CCSL : B022
TWNC : ON
SB : OFF XB : LOW
PYR : .05/ .10/ .25
GYROS : OFF

FDS MODE
XB DATA RATE (MI)

UV-5A

600 (36)

VOYAGER COVERAGE

| ----- VGR ----- |

NOTES

UTC: 7 8 9 10 11 12 13 14 15 16 17 18 19 20 21 22 23 0 1 2 3 4 5 6 7

ISSUE DATE: 07/27/94 - 06:56

PDT: 0 1 2 3 4 5 6 7 8 9 10 11 12 13 14 15 16 17 18 19 20 21 22 23 0

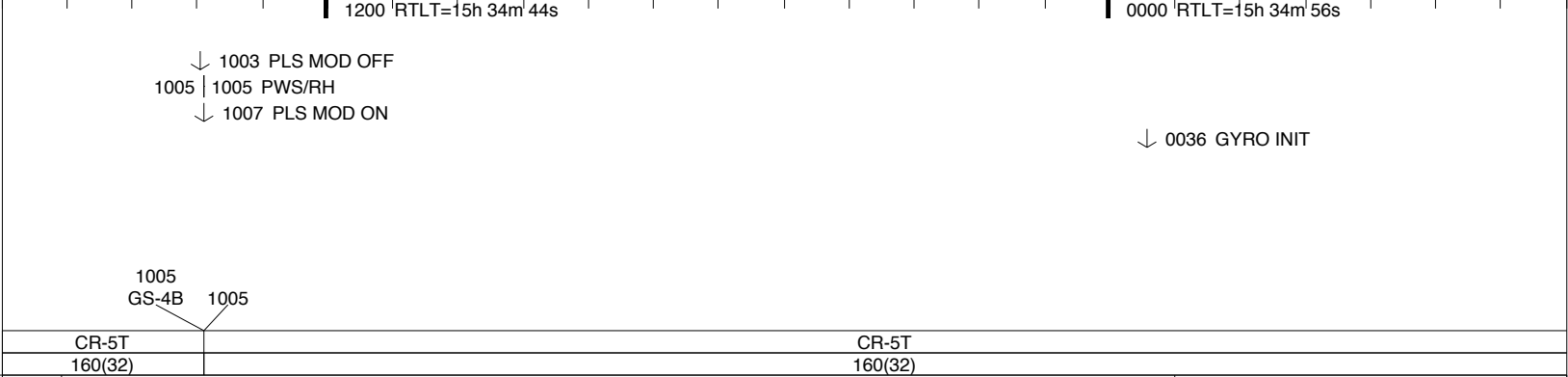
TUESDAY
AUGUST 2, 1994
214-215

UTC: 7 8 9 10 11 12 13 14 15 16 17 18 19 20 21 22 23 0 1 2 3 4 5 6 7

RTLTL : 15h 34m 34s
VOYAGER 1
FDSL : 11AF

CCSL : A019
TWNC : ON
SB : OFF XB : LOW
PYR : .05/ .10/ .25
GYROS : ON

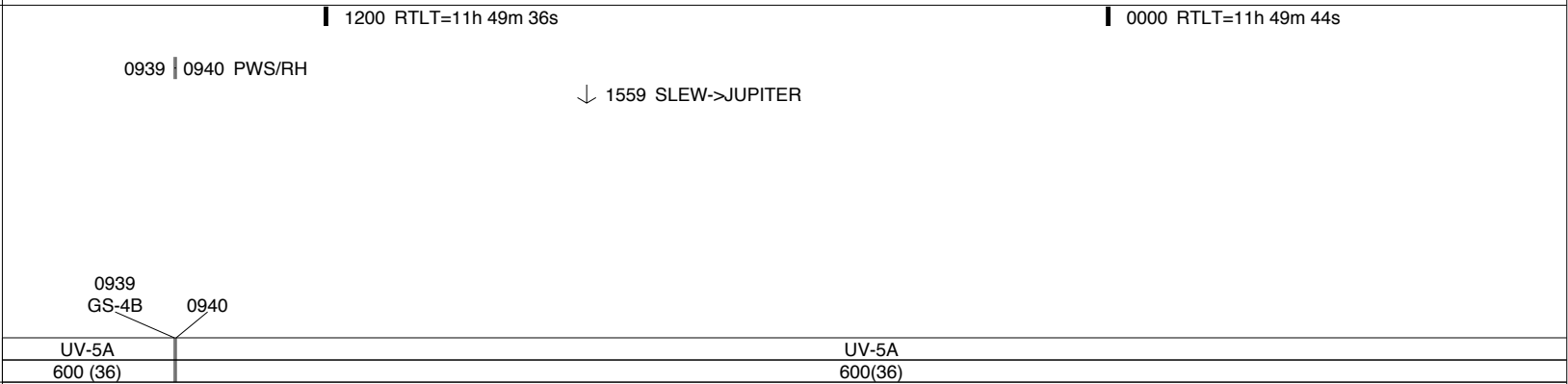
FDS MODE
XB DATA RATE (MI)



DSN COVERAGE

RTLTL : 11h 49m 28s
VOYAGER 2
FDSL : 11AF
CCSL : B022
TWNC : ON
SB : OFF XB : LOW
PYR : .05/ .10/ .25
GYROS : OFF

FDS MODE
XB DATA RATE (MI)



VOYAGER COVERAGE

NOTES

- [1] S/C 32=GS-4B @ 0939 XB=2.8K(41) NOT RECOVERABLE
- [2] S/C 31=GS-4B @ 1005 XB=2.8K(41) NOT RECOVERABLE

UTC: 7 8 9 10 11 12 13 14 15 16 17 18 19 20 21 22 23 0 1 2 3 4 5 6 7

ISSUE DATE: 07/27/94 - 06:56

PDT: 0 1 2 3 4 5 6 7 8 9 10 11 12 13 14 15 16 17 18 19 20 21 22 23 0

WEDNESDAY
AUGUST 3, 1994
215-216

SFOS/A106

UTC: 7 8 9 10 11 12 13 14 15 16 17 18 19 20 21 22 23 0 1 2 3 4 5 6 7

RTLT : 15h 34m 56s

1200 RTLT=15h 35m 6s

0000 RTLT=15h 35m 18s

VOYAGER 1

FDSL : 11AF

CCSL : A019
TWNC : ON
SB : OFF XB : LOW
PYR : .05/ .10/ .25
GYROS : ON

FDS MODE
XB DATA RATE (MI)

CR-5T

160(32)

31 -- 12 [D] -- | 0845

1435 | ----- 61 [D] ----- | 1945

0100 | ----- 12 [D] ----- | 0550

0535 | 14 [D] |

2115 | ----- 65 [D] ----- | 0110

DSN COVERAGE
HPTXR

32 15 [D] | 0810

0825 | ----- 45 [D] ----- | 1540

0435 | --- 15 [D] ---

HPTXR

RTLT : 11h 49m 44s

1200 RTLT=11h 49m 52s

0000 RTLT=11h 50m 0s

VOYAGER 2

FDSL : 11AF

CCSL : B022
TWNC : ON
SB : OFF XB : LOW
PYR : .05/ .10/ .25
GYROS : OFF

FDS MODE
XB DATA RATE (MI)

UV-5A

600(36)

VOYAGER COVERAGE

| ----- VGR ----- |

NOTES

UTC: 7 8 9 10 11 12 13 14 15 16 17 18 19 20 21 22 23 0 1 2 3 4 5 6 7

ISSUE DATE: 07/27/94 - 06:56

PDT: 0 1 2 3 4 5 6 7 8 9 10 11 12 13 14 15 16 17 18 19 20 21 22 23 0

THURSDAY
AUGUST 4, 1994
216-217

VGR STAFF/A148
VCB/MD MTG/A148

UTC: 7 8 9 10 11 12 13 14 15 16 17 18 19 20 21 22 23 0 1 2 3 4 5 6 7

RTLT : 15h 35m 18s

1200 RTLT=15h 35m 30s 0000 RTLT=15h 35m 40s

VOYAGER 1

▼ 1545 DUMMY

FDSL : 11AF

▽ 1550 GYRO DRIFT U/D

CCSL : A019
TWNC : ON
SB : OFF XB : LOW
PYR : .05/ .10/ .25
GYROS : ON

FDS MODE
XB DATA RATE (MI)

CR-5T
160(32)

31 --- 14 [D] --- | 0905
0945 |----- 42 [D] -----| 1345
1515 |----- 61 -----| 1955
2115 |----- 65 [D] -----| 0105
0115 |----- 12 [D] -----|

DSN COVERAGE HPTXR

32 15 [D] | 0805
0820 |----- 45 [D] -----| 1920
0430 |----- 15 [D] -----|

HPTXR

RTLT : 11h 50m 0s

1200 RTLT=11h 50m 8s 0000 RTLT=11h 50m 14s

VOYAGER 2

FDSL : 11AF

CCSL : B022
TWNC : ON
SB : OFF XB : LOW
PYR : .05/ .10/ .25
GYROS : OFF

FDS MODE
XB DATA RATE (MI)

UV-5A
600(36)

VOYAGER COVERAGE

|----- VGR -----|

NOTES

UTC: 7 8 9 10 11 12 13 14 15 16 17 18 19 20 21 22 23 0 1 2 3 4 5 6 7

ISSUE DATE: 07/27/94 - 06:56

PDT: 0 1 2 3 4 5 6 7 8 9 10 11 12 13 14 15 16 17 18 19 20 21 22 23 0

FRIDAY
AUGUST 5, 1994
217-218

SCRAP/A106

UTC: 7 8 9 10 11 12 13 14 15 16 17 18 19 20 21 22 23 0 1 2 3 4 5 6 7

RTLT : 15h 35m 40s

1200 RTLT=15h 35m 52s

0000 RTLT=15h 36m 4s

VOYAGER 1

FDSL : 11AF

CCSL : A019
TWNC : ON
SB : OFF XB : LOW
PYR : .05/ .10/ .25
GYROS : ON

↓ 0047 AAI
0050 - 0645 |----- MAGROL -----|
0103 |----- UVS MAGROL RIDER -----|
SLEW->+20 DEG EL 0350 ↓
RAI 0638 ↓
CRU 0645 ↓
GYROS OFF 0645 ↓

FDS MODE
XB DATA RATE (MI)

CR-5T
160(32)

31 12 [D] | 0825

1430 |----- 61 [D] -----| 2215

0300 |----- 14 [D,1] -----|

2200 |----- 15 [D,1] -----| 0320

DSN COVERAGE
HPTXR

32 15 [D] | 0805

0830 |----- 45 [D] -----| 1540

1520 |----- 43 [B,o] -----| 1915

0425 |----- 15 [D] -----|

HPTXR

RTLT : 11h 50m 14s

1200 RTLT=11h 50m 22s

0000 RTLT=11h 50m 30s

VOYAGER 2

FDSL : 11AF

CCSL : B022
TWNC : ON
SB : OFF XB : LOW
PYR : .05/ .10/ .25
GYROS : OFF

FDS MODE
XB DATA RATE (MI)

UV-5A
600(36)

VOYAGER COVERAGE

|----- VGR -----|

NOTES

[1] AGC & SNR VARIATIONS EXPECTED DURING MAGROL (0050-0645)

UTC: 7 8 9 10 11 12 13 14 15 16 17 18 19 20 21 22 23 0 1 2 3 4 5 6 7

ISSUE DATE: 07/27/94 - 06:56

PDT: 0 1 2 3 4 5 6 7 8 9 10 11 12 13 14 15 16 17 18 19 20 21 22 23 0

SATURDAY
AUGUST 6, 1994
218-219

UTC: 7 8 9 10 11 12 13 14 15 16 17 18 19 20 21 22 23 0 1 2 3 4 5 6 7

RTLT : 15h 36m 4s

1200 RTLT=15h 36m 16s

0000 RTLT=15h 36m 26s

VOYAGER 1

U/L 1900 | - | - - - - - TLC (SHORT-FORM) - - - - -

FDSL : 11AF

| 0710 UVS MAGROL RIDER

CCSL : A019
TWNC : ON
SB : OFF XB : LOW
PYR : .05/ .10/ .25
GYROS : OFF

FDS MODE
XB DATA RATE (MI)

CR-5T

160(32)

31

- - | 0730 14 [D,1]

0940 | - - - - - 42 [D]

- - - - - | 1340

2200 | - - - - -

12 [D] - - - - -

HPTXR

1425 | - - - - -

61 - - - - -

- - - - - | 2015

DSN COVERAGE

32

15 [D] | 0800

0810 | - - - - -

- - - - - 45 [D]

- - - - - | 1915

0425 | - - - - -

15 [D] - - - - -

HPTXR

RTLT : 11h 50m 30s

1200 RTLT=11h 50m 38s

0000 RTLT=11h 50m 46s

VOYAGER 2

↓ 1600 SLEW->JUPITER

FDSL : 11AF

CCSL : B022
TWNC : ON
SB : OFF XB : LOW
PYR : .05/ .10/ .25
GYROS : OFF

FDS MODE
XB DATA RATE (MI)

UV-5A

600(36)

VOYAGER COVERAGE

- - - - - ON CALL - - - - -

NOTES

UTC: 7 8 9 10 11 12 13 14 15 16 17 18 19 20 21 22 23 0 1 2 3 4 5 6 7

ISSUE DATE: 07/27/94 - 06:56

PDT: 0 1 2 3 4 5 6 7 8 9 10 11 12 13 14 15 16 17 18 19 20 21 22 23 0

SUNDAY
AUGUST 7, 1994
219-220

UTC: 7 8 9 10 11 12 13 14 15 16 17 18 19 20 21 22 23 0 1 2 3 4 5 6 7

RTLT : 15h 36m 26s 1200 RTLT=15h 36m 38s 0000 RTLT=15h 36m 50s

VOYAGER 1

--- TLC (SHORT-FORM) --- | D/L | 1205

FDSL : 11AF

CCSL : A019
TWNC : ON
SB : OFF XB : LOW
PYR : .05/ .10/ .25
GYROS : OFF

FDS MODE CR-5T

XB DATA RATE (MI) 160(32)

31 --- 12 [D] --- | 0850 42 [D] 0645 |

0935 | ----- 42 [D] ----- | 1335

1530 | ----- 65 [D] ----- | 0055

HPTXR

DSN COVERAGE

32 --- | 0755 15 [D] 0415 | --- 15 [D] ---

0825 | ----- 45 [D] ----- | 1910

HPTXR

RTLT : 11h 50m 46s 1200 RTLT=11h 50m 56s 0000 RTLT=11h 51m 4s

VOYAGER 2

FDSL : 11AF

CCSL : B022
TWNC : ON
SB : OFF XB : LOW
PYR : .05/ .10/ .25
GYROS : OFF

FDS MODE UV-5A

XB DATA RATE (MI) 600(36)

VOYAGER COVERAGE ----- ON CALL -----

NOTES

UTC: 7 8 9 10 11 12 13 14 15 16 17 18 19 20 21 22 23 0 1 2 3 4 5 6 7

ISSUE DATE: 07/27/94 - 06:56

PDT: 0 1 2 3 4 5 6 7 8 9 10 11 12 13 14 15 16 17 18 19 20 21 22 23 0

MONDAY
AUGUST 8, 1994
220-221

MD MTG/A148

UTC: 7 8 9 10 11 12 13 14 15 16 17 18 19 20 21 22 23 0 1 2 3 4 5 6 7

RTLT : 15h 36m 50s

1200 RTLT=15h 37m 2s

0000 RTLT=15h 37m 12s

VOYAGER 1

FDSL : 11AF

CCSL : A019
TWNC : ON
SB : OFF XB : LOW
PYR : .05/ .10/ .25
GYROS : OFF

FDS MODE
XB DATA RATE (MI)

CR-5T

160(32)

31 -----42 [D]-----| 1305 2320 |-----12 [D]-----

1420 |-----61 [D]-----| 2200

DSN COVERAGE
HPTXR

32 ---|0750 15 [D]-----| 1905 0435 |---15 [D]---

0930 |-----45 [D]-----|

HPTXR

RTLT : 11h 51m 4s

1200 RTLT=11h 51m 12s

0000 RTLT=11h 51m 20s

VOYAGER 2

FDSL : 11AF

CCSL : B022
TWNC : ON
SB : OFF XB : LOW
PYR : .05/ .10/ .25
GYROS : OFF

FDS MODE
XB DATA RATE (MI)

UV-5A

600(36)

VOYAGER COVERAGE

|-----VGR-----|

NOTES

UTC: 7 8 9 10 11 12 13 14 15 16 17 18 19 20 21 22 23 0 1 2 3 4 5 6 7

ISSUE DATE: 07/27/94 - 06:56

PDT: 0 1 2 3 4 5 6 7 8 9 10 11 12 13 14 15 16 17 18 19 20 21 22 23 0

TUESDAY
AUGUST 9, 1994
221-222

UTC: 7 8 9 10 11 12 13 14 15 16 17 18 19 20 21 22 23 0 1 2 3 4 5 6 7

RTLT : 15h 37m 12s
VOYAGER 1
FDSL : 11AF
CCSL : A019
TWNC : ON
SB : OFF XB : LOW
PYR : .05/ .10/ .25
GYROS : OFF

1200 RTLT=15h 37m 24s
0000 RTLT=15h 37m 36s

↓ 0940 PLS MOD OFF
0942 | 0943 PWS/RH
↓ 0944 PLS MOD ON

0942 GS-4B 0943

FDS MODE	CR-5T	CR-5T
XB DATA RATE (MI)	160(32)	160(32)

DSN COVERAGE

31 --- 12 [D] --- 0845
0830 |----- 42 [D] -----| 1300
1445 |----- 65 [D] -----| 0050

HPTXR

32 --- 0745 15 [D]
|----- 45 [D] -----| 0730- 1510
1455 |--- 43 [o] ---| 1715

HPTXR

RTLT : 11h 51m 20s
VOYAGER 2
FDSL : 11AF
CCSL : B022
TWNC : ON
SB : OFF XB : LOW
PYR : .05/ .10/ .25
GYROS : OFF

1200 RTLT=11h 51m 28s
0000 RTLT=11h 51m 36s

0916 | 0917 PWS/RH

0916 GS-4B 0917

FDS MODE	UV-5A	UV-5A
XB DATA RATE (MI)	600(36)	600(36)

VOYAGER COVERAGE |----- VGR -----|

NOTES
[1] S/C 32=GS-4B @ 0916 XB=2.8K(41) NOT RECOVERABLE
[2] S/C 31=GS-4B @ 0942 XB=2.8K(41) NOT RECOVERABLE

UTC: 7 8 9 10 11 12 13 14 15 16 17 18 19 20 21 22 23 0 1 2 3 4 5 6 7

ISSUE DATE: 07/27/94 - 06:56

PDT: 0 1 2 3 4 5 6 7 8 9 10 11 12 13 14 15 16 17 18 19 20 21 22 23 0

WEDNESDAY
AUGUST 10, 1994
222-223

SFOS/A106

UTC: 7 8 9 10 11 12 13 14 15 16 17 18 19 20 21 22 23 0 1 2 3 4 5 6 7

RTLT : 15h 37m 36s

1200 RTLT=15h 37m 48s

0000 RTLT=15h 37m 58s

VOYAGER 1

▼ 1600 DUMMY

FDSL : 11AF

CCSL : A019
TWNC : ON
SB : OFF XB : LOW
PYR : .05/ .10/ .25
GYROS : OFF

FDS MODE
XB DATA RATE (MI)

CR-5T
160(32)

31 -- 12 [D] - | 0840 1015 |----- 43 [D] -----| 1345 1500 |----- 61 -----| 2100 0100 |----- 12 [D] -----|

DSN COVERAGE
HPTXR

32 -- | 0745 15 [D] 0755 |----- 45 [D] -----| 1555 0430 |----- 15 [D] -----|

HPTXR

RTLT : 11h 51m 36s

1200 RTLT=11h 51m 46s

0000 RTLT=11h 51m 54s

VOYAGER 2

↓ 1600 SLEW->JUPITER

FDSL : 11AF

CCSL : B022
TWNC : ON
SB : OFF XB : LOW
PYR : .05/ .10/ .25
GYROS : OFF

FDS MODE
XB DATA RATE (MI)

UV-5A
600(36)

VOYAGER COVERAGE

|----- VGR -----|

NOTES

UTC: 7 8 9 10 11 12 13 14 15 16 17 18 19 20 21 22 23 0 1 2 3 4 5 6 7

ISSUE DATE: 07/27/94 - 06:56

PDT: 0 1 2 3 4 5 6 7 8 9 10 11 12 13 14 15 16 17 18 19 20 21 22 23 0

THURSDAY
AUGUST 11, 1994
223-224

VGR STAFF/A148
VCB/MD MTG/A148

UTC: 7 8 9 10 11 12 13 14 15 16 17 18 19 20 21 22 23 0 1 2 3 4 5 6 7

RTLT : 15h 37m 58s

1200 RTLT=15h 38m 10s

0000 RTLT=15h 38m 22s

VOYAGER 1

FDSL : 11AF

CCSL : A019
TWNC : ON
SB : OFF XB : LOW
PYR : .05/ .10/ .25
GYROS : OFF

FDS MODE
XB DATA RATE (MI)

CR-5T
160(32)

31 -- 12 [D] -- | 0835 0935 |----- 42 [D] -----| 1340 1405 |----- 61 [D] -----| 2115 2345 |----- 12 [D] -----|

HPTXR

DSN COVERAGE

32 -- | 0740 15 [D] 0750 |----- 45 [D] -----| 1515 1455 |----- 43 [o] -----| 1855 0355 |----- 15 [D] -----|

HPTXR

RTLT : 11h 51m 54s

1200 RTLT=11h 52m 2s

0000 RTLT=11h 52m 12s

VOYAGER 2

▼ 1620 DUMMY

FDSL : 11AF

CCSL : B022
TWNC : ON
SB : OFF XB : LOW
PYR : .05/ .10/ .25
GYROS : OFF

FDS MODE
XB DATA RATE (MI)

UV-5A
600(36)

VOYAGER COVERAGE

|----- VGR -----|

NOTES

UTC: 7 8 9 10 11 12 13 14 15 16 17 18 19 20 21 22 23 0 1 2 3 4 5 6 7

ISSUE DATE: 07/27/94 - 06:56

PDT: 0 1 2 3 4 5 6 7 8 9 10 11 12 13 14 15 16 17 18 19 20 21 22 23 0

FRIDAY
AUGUST 12, 1994
224-225

SCRAP/A106

UTC: 7 8 9 10 11 12 13 14 15 16 17 18 19 20 21 22 23 0 1 2 3 4 5 6 7

RTLT : 15h 38m 22s

1200 RTLT=15h 38m 34s

0000 RTLT=15h 38m 46s

VOYAGER 1

U/L 0100 | - | - - - - - TLC (SHORT-FORM) - - - - -

FDSL : 11AF

CCSL : A019
TWNC : ON
SB : OFF XB : LOW
PYR : .05/ .10/ .25
GYROS : OFF

FDS MODE
XB DATA RATE (MI)

CR-5T

160(32)

31 | 12 [D] - | 0830 | 2320 | - - - - - 12 - - - - -

0935 | - - - - - 42 [D] - - - - - | 1215

1400 | - - - - - 61 [D] - - - - - | 2235

DSN COVERAGE
HPTXR

32 | - - | 0735 15 [D] | 0355 | - - - - - 15 [D] - - - - -

0750 | - - - - - 45 [D] - - - - - | 1515
1455 | - - - - - 43 [o] - - - - - | 1850

HPTXR

RTLT : 11h 52m 12s

1200 RTLT=11h 52m 20s

0000 RTLT=11h 52m 28s

VOYAGER 2

FDSL : 11AF

CCSL : B022
TWNC : ON
SB : OFF XB : LOW
PYR : .05/ .10/ .25
GYROS : OFF

FDS MODE
XB DATA RATE (MI)

UV-5A

600(36)

VOYAGER COVERAGE

| - - - - - VGR - - - - - |

NOTES

UTC: 7 8 9 10 11 12 13 14 15 16 17 18 19 20 21 22 23 0 1 2 3 4 5 6 7

ISSUE DATE: 07/27/94 - 06:56

PDT: 0 1 2 3 4 5 6 7 8 9 10 11 12 13 14 15 16 17 18 19 20 21 22 23 0

SATURDAY
AUGUST 13, 1994
225-226

UTC: 7 8 9 10 11 12 13 14 15 16 17 18 19 20 21 22 23 0 1 2 3 4 5 6 7

RTLT : 15h 38m 46s

1200 RTLT=15h 38m 58s

0000 RTLT=15h 39m 8s

VOYAGER 1

----- TLC (SHORT-FORM) ----- + D/L -| 1807

FDSL : 11AF

CCSL : A019
TWNC : ON
SB : OFF XB : LOW
PYR : .05/ .10/ .25
GYROS : OFF

FDS MODE
XB DATA RATE (MI)

CR-5T

160(32)

31

-- 12 --

| 0830

| 0930

|----- 42 [D] -----

| 1330

| 1355

|----- 61 [D] -----

| 2125

|----- 12 [D] -----

|

DSN COVERAGE

HPTXR

32

-- 0730

| 15 [D]

|

|----- 45 [D] -----

|

|----- 0745 - 1845 -----

|

| 0320

|----- 15 [D] -----

|

HPTXR

RTLT : 11h 52m 28s

1200 RTLT=11h 52m 38s

0000 RTLT=11h 52m 46s

VOYAGER 2

FDSL : 11AF

CCSL : B022
TWNC : ON
SB : OFF XB : LOW
PYR : .05/ .10/ .25
GYROS : OFF

FDS MODE
XB DATA RATE (MI)

UV-5A

600(36)

VOYAGER COVERAGE

----- ON CALL -----

NOTES

UTC: 7 8 9 10 11 12 13 14 15 16 17 18 19 20 21 22 23 0 1 2 3 4 5 6 7

ISSUE DATE: 07/27/94 - 06:56

PDT: 0 1 2 3 4 5 6 7 8 9 10 11 12 13 14 15 16 17 18 19 20 21 22 23 0

SUNDAY
AUGUST 14, 1994
226-227

UTC: 7 8 9 10 11 12 13 14 15 16 17 18 19 20 21 22 23 0 1 2 3 4 5 6 7

RTLT : 15h 39m 8s

1200 RTLT=15h 39m 20s

0000 RTLT=15h 39m 32s

VOYAGER 1

FDSL : 11AF

CCSL : A019
TWNC : ON
SB : OFF XB : LOW
PYR : .05/ .10/ .25
GYROS : OFF

FDS MODE
XB DATA RATE (MI)

CR-5T

160(32)

31 12 [D] - | 0825 2130 |----- 12 [D] -----
0930 |----- 42 [D] -----| 1235 42 [D] 0605 |-----

HPTXR

1350 |----- 61 [D] -----| 2145

DSN COVERAGE

32 - | 0725 15 [D] 0315 |----- 15 [D] -----
|----- 45 [D] -----| 0740 - 1840

HPTXR

1200 RTLT=11h 52m 56s

0000 RTLT=11h 53m 4s

RTLT : 11h 52m 46s

VOYAGER 2

↓ 1601 SLEW->JUPITER

FDSL : 11AF

CCSL : B022
TWNC : ON
SB : OFF XB : LOW
PYR : .05/ .10/ .25
GYROS : OFF

FDS MODE
XB DATA RATE (MI)

UV-5A

600(36)

VOYAGER COVERAGE

----- ON CALL -----

NOTES

UTC: 7 8 9 10 11 12 13 14 15 16 17 18 19 20 21 22 23 0 1 2 3 4 5 6 7