

ISSUE DATE: 03/06/02 - 09:44

PST: 0 1 2 3 4 5 6 7 8 9 10 11 12 13 14 15 16 17 18 19 20 21 22 23 0

THURSDAY
MARCH 7, 2002
066-067

UTC: 8 9 10 11 12 13 14 15 16 17 18 19 20 21 22 23 0 1 2 3 4 5 6 7 8

RTLTL : 23h 16m 32s

1200 RTLTL=23h 16m 30s

0000 RTLTL=23h 16m 26s

VOYAGER 1

U/L 1455 | - | - - - - - TLC (SHORT-FORM) - - - - -

FDSL : 11AF

S/C 31 STATUS

FDS CLOCK DRIFT:
ADD TO S/C EVENT
ERT: -23.695 sec

ROLLREF = RIGIL
KENTAURUS

CCSL : A042
TWNC : ON
SB : OFF XB : LOW
PYR : .05/ .10/ .25
GYROS : OFF

FDS MODE
XB DATA RATE (MI)

CR-5T
160 (32)

31

65 [D] - - - - | 1030

0030 | - - - - - 63 [D] - - - - -

1010 | - - - - 25 [D] - - - - | 1305

1245 | - - - - 14 [T] - - - - | 1545

DSN COVERAGE
HPTXR

32

1420 | - - - - - 43 [D] - - - - - | 2325

HPTXR

RTLTL : 18h 34m 0s

1200 RTLTL=18h 33m 58s

0000 RTLTL=18h 33m 56s

VOYAGER 2

- - - - - COMMAND MORATORIUM - - - - -

- ↓ 1751 GYRO INIT
- ↓ 1751 GYROS BC ON
- ↓ 1801 GYRO FAULT TEST

FDSL : 11AF

S/C 32 STATUS

FDS CLOCK DRIFT:
ADD TO S/C EVENT
ERT: -1:42.356 sec

ROLLREF = VEGA

1852 | 1859 CCSTIM(B)

1729 | 1737 TAPPOS

↓ 1750 GYRO FAULT TEST STOP

↓ 1911 MEMUPD ENA BHELI1

CCSL : B115
TWNC : ON
SB : OFF XB : HI
PYR : .05/ .10 / .25
GYROS : AB ON

FDS MODE
XB DATA RATE (MI)

CR-5T
160(32)

VOYAGER COVERAGE

- - - - - ON CALL - - - - - | VGR - | - - - - - ON CALL - - - - -

NOTES

UTC: 8 9 10 11 12 13 14 15 16 17 18 19 20 21 22 23 0 1 2 3 4 5 6 7 8

ISSUE DATE: 03/06/02 - 09:44

PST: 0 1 2 3 4 5 6 7 8 9 10 11 12 13 14 15 16 17 18 19 20 21 22 23 0

FRIDAY
MARCH 8, 2002
067-068

UTC: 8 9 10 11 12 13 14 15 16 17 18 19 20 21 22 23 0 1 2 3 4 5 6 7 8

RTLTL : 23h 16m 26s

1200 RTLTL=23h 16m 24s

0000 RTLTL=23h 16m 22s

VOYAGER 1

----- TLC (SHORT-FORM) -----| D/L -| 1540

0156 || 0157 PWS/RH

FDSL : 11AF

CCSL : A042
TWNC : ON
SB : OFF XB : LOW
PYR : .05/ .10/ .25
GYROS : OFF

2254 |-----| 0004 TAPPOS

0404 | TAPPOS | 0527

FDS MODE
XB DATA RATE (MI)

CR-5T
160 (32)

CR-5T
160(32)

0156
GS-4B 0157

31 | 0810 63 [D]
0900 |-----| 15 [D] -----| 1750

0135 |-----| 65 [D] -----

HPTXR

1730 |-----| 43 [D] -----| 2140

DSN COVERAGE

32

1625 |-----| 45 [D] -----| 0215

HPTXR

RTLTL : 18h 33m 56s

1200 RTLTL=18h 33m 52s

0000 RTLTL=18h 33m 50s

----- COMMAND MORATORIUM -----| 1750

VOYAGER 2

FDSL : 11AF

CCSL : B115
TWNC : ON
SB : OFF XB : HI
PYR : .05/ .10 / .25
GYROS : BC ON

FDS MODE
XB DATA RATE (MI)

CR-5T
160(32)

VOYAGER COVERAGE

----- ON CALL -----

NOTES

[1] S/C 31=GS-4B @ 0156 XB=2.8K(41) NOT RECOVERABLE

UTC: 8 9 10 11 12 13 14 15 16 17 18 19 20 21 22 23 0 1 2 3 4 5 6 7 8

ISSUE DATE: 03/06/02 - 09:44

PST: 0 1 2 3 4 5 6 7 8 9 10 11 12 13 14 15 16 17 18 19 20 21 22 23 0

SATURDAY
MARCH 9, 2002
068-069

UTC: 8 9 10 11 12 13 14 15 16 17 18 19 20 21 22 23 0 1 2 3 4 5 6 7 8

RTLT : 23h 16m 22s

1200 RTLT=23h 16m 20s

0000 RTLT=23h 16m 18s

VOYAGER 1

FDSL : 11AF

CCSL : A042
TWNC : ON
SB : OFF XB : LOW
PYR : .05/ .10/ .25
GYROS : OFF

FDS MODE
XB DATA RATE (MI)

CR-5T

160(32)

31 65 [D] -| 0920 0240 |----- 63 [D] -----
0900 |----- 15 [D] -----| 1635

HPTXR

1615 |----- 43 [D] -----| 0030

DSN COVERAGE

32

1510 |----- 34 [o] -----| 2255

HPTXR

RTLT : 18h 33m 50s

1200 RTLT=18h 33m 48s

0000 RTLT=18h 33m 46s

VOYAGER 2

FDSL : 11AF

CCSL : B115
TWNC : ON
SB : OFF XB : HI
PYR : .05/ .10 / .25
GYROS : BC ON

FDS MODE
XB DATA RATE (MI)

CR-5T

160(32)

VOYAGER COVERAGE

----- ON CALL -----

NOTES

UTC: 8 9 10 11 12 13 14 15 16 17 18 19 20 21 22 23 0 1 2 3 4 5 6 7 8

ISSUE DATE: 03/06/02 - 09:44

PST: 0 1 2 3 4 5 6 7 8 9 10 11 12 13 14 15 16 17 18 19 20 21 22 23 0

SUNDAY
MARCH 10, 2002
069-070

UTC: 8 9 10 11 12 13 14 15 16 17 18 19 20 21 22 23 0 1 2 3 4 5 6 7 8

RTLT : 23h 16m 18s

1200 RTLT=23h 16m 16s

0000 RTLT=23h 16m 14s

VOYAGER 1

FDSL : 11AF

CCSL : A042
TWNC : ON
SB : OFF XB : LOW
PYR : .05/ .10/ .25
GYROS : OFF

FDS MODE
XB DATA RATE (MI)

CR-5T

160(32)

31

0805 63 [D]

0100

----- 63 [D] -----

0910

----- 25 [D] -----

1820

DSN COVERAGE
HPTXR

32

1520

----- 43 [o] -----

2325

HPTXR

RTLT : 18h 33m 46s

1200 RTLT=18h 33m 44s

0000 RTLT=18h 33m 40s

VOYAGER 2

FDSL : 11AF

CCSL : B115
TWNC : ON
SB : OFF XB : HI
PYR : .05/ .10 / .25
GYROS : BC ON

FDS MODE
XB DATA RATE (MI)

CR-5T

160(32)

VOYAGER COVERAGE

----- ON CALL -----

NOTES

UTC: 8 9 10 11 12 13 14 15 16 17 18 19 20 21 22 23 0 1 2 3 4 5 6 7 8

ISSUE DATE: 03/06/02 - 09:44

PST: 0 1 2 3 4 5 6 7 8 9 10 11 12 13 14 15 16 17 18 19 20 21 22 23 0

<p>MONDAY MARCH 11, 2002 070-071</p>	
<p>UTC: 8 9 10 11 12 13 14 15 16 17 18 19 20 21 22 23 0 1 2 3 4 5 6 7 8</p> <p>RTLTL : 23h 16m 14s</p> <p>VOYAGER 1</p> <p>FDSL : 11AF</p> <p>CCSL : A042 TWNC : ON SB : OFF XB : LOW PYR : .05/ .10/ .25 GYROS : OFF</p> <p>FDS MODE XB DATA RATE (MI)</p>	<p>1200 RTLTL=23h 16m 12s</p> <p>0000 RTLTL=23h 16m 10s</p> <p>↓ 1755 BAY 1 HTR OFF ↓ 1759 PITCH=.10 ↓ 1759 X/B HI POWER ↓ 1800 GYROS AB ON ↓ 1801 GYRO INIT ↓ 1810 GYRO FAULT TEST</p> <p>U/L 0600 - TLC (SHORT-FORM) - - - - -</p> <p>CR-5T 160(32)</p>
<p>DSN COVERAGE</p> <p>HPTXR 31</p> <p>HPTXR 32</p>	<p>0815 63 [D] 0905 - - - - - 25 [D] - - - - - 1825 1805 - - - - - 34 [D] - - - - - 2145</p> <p>1415 - - - - - 43 [D] - - - - - 2045</p> <p>0220 - 0730 - - - - - 63 [T] - - - - - </p>
<p>RTLTL : 18h 33m 40s</p> <p>VOYAGER 2</p> <p>FDSL : 11AF</p> <p>CCSL : B115 TWNC : ON SB : OFF XB : HI PYR : .05/ .10 / .25 GYROS : BC ON</p> <p>FDS MODE XB DATA RATE (MI)</p>	<p>1200 RTLTL=18h 33m 38s</p> <p>0000 RTLTL=18h 33m 36s</p> <p>↓ 1906 ALL DB=.05 ↓ 1922 AAI 1923 - - 2000 ASCAL ↓ 1958 RAI ↓ 2000 CRU ↓ 2009 ROLL=.25 ↓ 2009 YAW=.10 ↓ 2010 GYRO FAULT TEST</p> <p>1851 2003 EL-40 40(30)</p> <p>CR-5T 160(32)</p> <p>CR-5T 160(32)</p>
<p>VOYAGER COVERAGE</p>	<p>----- ON CALL ----- + ----- VGR ----- + ----- ON CALL -----</p>
<p>NOTES</p>	<p>[1] S/C 32 - D/L AGC/SNR VARIATIONS EXPECTED DURING ASCAL (1923-2000)</p>
<p>UTC: 8 9 10 11 12 13 14 15 16 17 18 19 20 21 22 23 0 1 2 3 4 5 6 7 8</p>	

ISSUE DATE: 03/06/02 - 09:44

PST: 0 1 2 3 4 5 6 7 8 9 10 11 12 13 14 15 16 17 18 19 20 21 22 23 0

TUESDAY
MARCH 12, 2002
071-072

UTC: 8 9 10 11 12 13 14 15 16 17 18 19 20 21 22 23 0 1 2 3 4 5 6 7 8

RTLTL : 23h 16m 10s

1200 RTLTL=23h 16m 8s

0000 RTLTL=23h 16m 6s

VOYAGER 1

1932 | 1933 PWS/RH

FDSL : 11AF

TLC (SHORT-FORM)

D/L | 0644

CCSL : A042
TWNC : ON
SB : OFF XB : HI
PYR : .10 /.10/.25
GYROS : AB ON

1932
GS-4B 1933

FDS MODE
XB DATA RATE (MI)

CR-5T
160(32)

CR-5T
160(32)

31 0855 |----- 15 [D] -----| 1535

0120 |----- 65 [D] -----|

1515 |----- 25 [D] -----| 1825

DSN COVERAGE
HPTXR

1415 |----- 43 [B] -----| 0040

HPTXR

RTLTL : 18h 33m 36s

1200 RTLTL=18h 33m 34s

0000 RTLTL=18h 33m 30s

VOYAGER 2

1834 | 1834 PWS/RH

FDSL : 11AF

↓ 1833 ENABLE BHELI1

▼ 2247 DUMMY (5 MIN BRACKETED 17:21)

CCSL : B115
TWNC : ON
SB : OFF XB : HI
PYR : .05 /.10 /.25
GYROS : BC ON

1834
GS-4B 1834

FDS MODE
XB DATA RATE (MI)

CR-5T
160(32)

CR-5T
160(32)

VOYAGER COVERAGE

ON CALL

VGR

ON CALL

NOTES

- [1] S/C 32=GS-4B @ 1834 XB=2.8K(41) NOT RECOVERABLE
- [2] S/C 31=GS-4B @ 1932 XB=2.8K(41) NOT RECOVERABLE

UTC: 8 9 10 11 12 13 14 15 16 17 18 19 20 21 22 23 0 1 2 3 4 5 6 7 8

ISSUE DATE: 03/06/02 - 09:44

PST: 0 1 2 3 4 5 6 7 8 9 10 11 12 13 14 15 16 17 18 19 20 21 22 23 0

WEDNESDAY
MARCH 13, 2002
072-073

UTC: 8 9 10 11 12 13 14 15 16 17 18 19 20 21 22 23 0 1 2 3 4 5 6 7 8

RTLTL : 23h 16m 6s

1200 RTLTL=23h 16m 4s

0000 RTLTL=23h 16m 2s

VOYAGER 1

▼ 1745 DUMMY (17:01)

FDSL : 11AF

CCSL : A042
TWNC : ON
SB : OFF XB : HI
PYR : .10 /.10/ .25
GYROS : AB ON

FDS MODE
XB DATA RATE (MI)

CR-5T

160(32)

31 | 0835 65 [D] | 1705 | 0020 | 63 [D] | 0645

0855 | 25 [D] | 1700 | 34 | 2150

HPTXR
DSN COVERAGE

32 | 1645 | 43 [D] | 2255 | 2235 | 34 [D] | 0305

HPTXR

RTLTL : 18h 33m 30s

1200 RTLTL=18h 33m 28s

0000 RTLTL=18h 33m 26s

COMMAND MORATORIUM 0655 |

VOYAGER 2

FDSL : 11AF

CCSL : B115
TWNC : ON
SB : OFF XB : HI
PYR : .05 /.10 / .25
GYROS : BC ON

FDS MODE
XB DATA RATE (MI)

CR-5T

160(32)

VOYAGER COVERAGE

----- ON CALL ----- | VGR | ----- ON CALL -----

NOTES

UTC: 8 9 10 11 12 13 14 15 16 17 18 19 20 21 22 23 0 1 2 3 4 5 6 7 8

ISSUE DATE: 03/06/02 - 09:44

PST: 0 1 2 3 4 5 6 7 8 9 10 11 12 13 14 15 16 17 18 19 20 21 22 23 0

THURSDAY
MARCH 14, 2002
073-074

UTC: 8 9 10 11 12 13 14 15 16 17 18 19 20 21 22 23 0 1 2 3 4 5 6 7 8

RTLT : 23h 16m 2s

1200 RTLT=23h 16m 0s

0000 RTLT=23h 15m 58s

VOYAGER 1

FDSL : 11AF

CCSL : A042
TWNC : ON
SB : OFF XB : HI
PYR : .10 /.10/.25
GYROS : AB ON

FDS MODE
XB DATA RATE (MI)

CR-5T

160(32)

31

0855 |----- 25 [D] -----| 1725

0120 |--- 65 [D] ---| 0350

DSN COVERAGE
HPTXR

32

1835 |----- 43 [D] -----| 0530

HPTXR

RTLT : 18h 33m 26s

1200 RTLT=18h 33m 22s

0000 RTLT=18h 33m 20s

VOYAGER 2

FDSL : 11AF

CCSL : B115
TWNC : ON
SB : OFF XB : HI
PYR : .05 /.10 /.25
GYROS : BC ON

----- COMMAND MORATORIUM -----

↓ 1900 AAI

1903 |----- MAGROL -----| 0059

↓ 0052 RAI

↓ 0059 CRU

↓ 0059 GYROS OFF

FDS MODE
XB DATA RATE (MI)

CR-5T

160(32)

VOYAGER COVERAGE

----- ON CALL -----

----- VGR -----

----- ON CALL -----

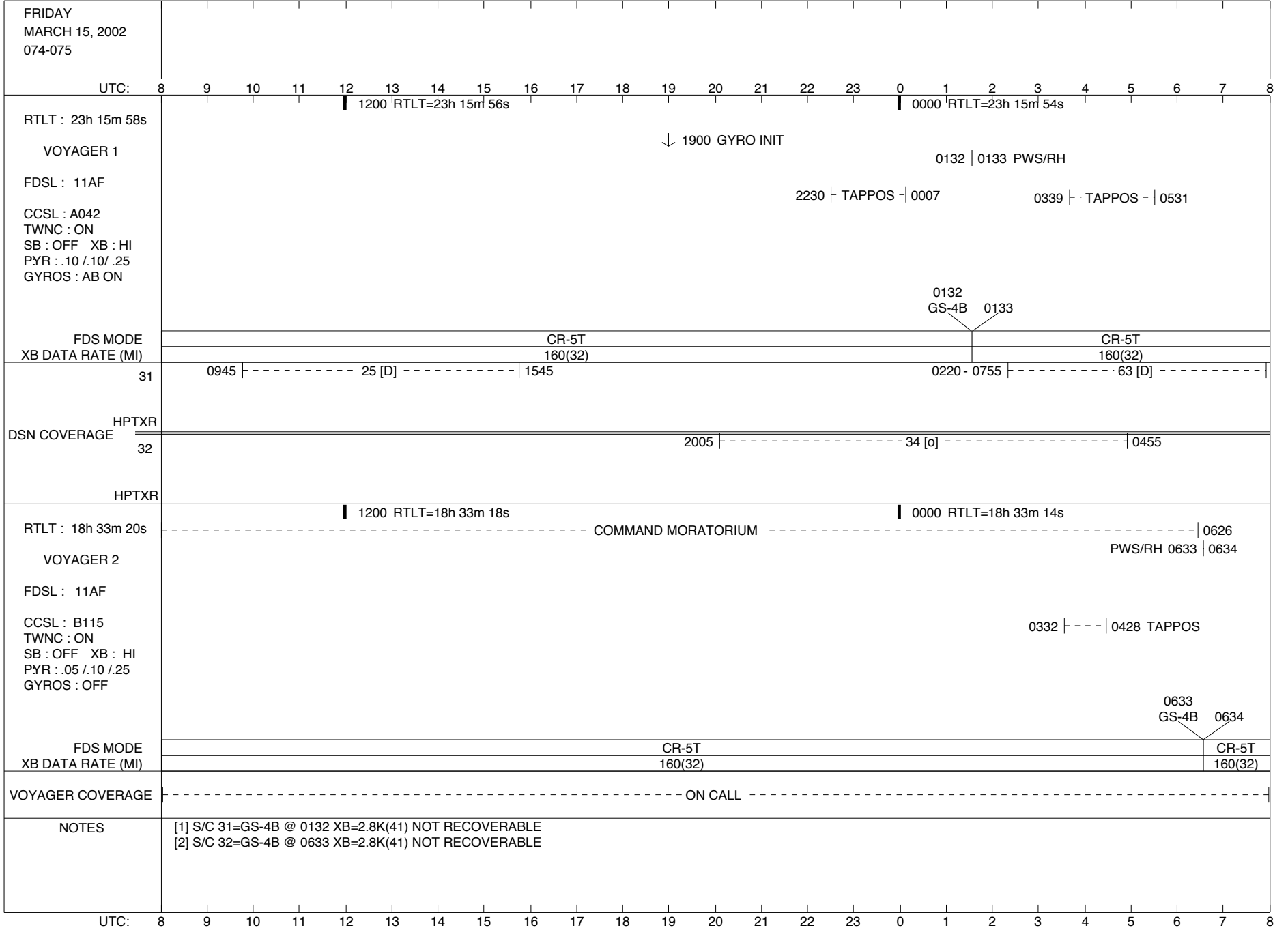
NOTES

[1] S/C 32 - D/L AGC VARIATIONS EXPECTED DURING MAGROL (1903-0059)

UTC: 8 9 10 11 12 13 14 15 16 17 18 19 20 21 22 23 0 1 2 3 4 5 6 7 8

ISSUE DATE: 03/06/02 - 09:44

PST: 0 1 2 3 4 5 6 7 8 9 10 11 12 13 14 15 16 17 18 19 20 21 22 23 0



ISSUE DATE: 03/06/02 - 09:44

PST: 0 1 2 3 4 5 6 7 8 9 10 11 12 13 14 15 16 17 18 19 20 21 22 23 0

SATURDAY
MARCH 16, 2002
075-076

UTC: 8 9 10 11 12 13 14 15 16 17 18 19 20 21 22 23 0 1 2 3 4 5 6 7 8

RTLTL : 23h 15m 54s

1200 RTLTL=23h 15m 52s

0000 RTLTL=23h 15m 50s

VOYAGER 1

FDSL : 11AF

CCSL : A042
TWNC : ON
SB : OFF XB : HI
PYR : .10 /.10/ .25
GYROS : AB ON

FDS MODE
XB DATA RATE (MI)

CR-5T

160(32)

31

----- 15 [D] ----- 0830 - 1820 0020 - 0745 ----- 63 [D] -----

HPTXR

1800 ----- 34 [D] ----- 2220

25 [D] 0725 -----

DSN COVERAGE

32

1450 ----- 45 [D] ----- 0545

HPTXR

RTLTL : 18h 33m 14s

1200 RTLTL=18h 33m 12s

0000 RTLTL=18h 33m 8s

VOYAGER 2

FDSL : 11AF

CCSL : B115
TWNC : ON
SB : OFF XB : HI
PYR : .05 /.10 / .25
GYROS : OFF

----- 0841 - 0923 TAPPOS

FDS MODE
XB DATA RATE (MI)

CR-5T

160(32)

VOYAGER COVERAGE

----- ON CALL -----

NOTES

UTC: 8 9 10 11 12 13 14 15 16 17 18 19 20 21 22 23 0 1 2 3 4 5 6 7 8

ISSUE DATE: 03/06/02 - 09:44

PST: 0 1 2 3 4 5 6 7 8 9 10 11 12 13 14 15 16 17 18 19 20 21 22 23 0

SUNDAY
MARCH 17, 2002
076-077

UTC: 8 9 10 11 12 13 14 15 16 17 18 19 20 21 22 23 0 1 2 3 4 5 6 7 8

RTLT : 23h 15m 50s

1200 RTLT=23h 15m 48s

0000 RTLT=23h 15m 46s

VOYAGER 1

FDSL : 11AF

CCSL : A042
TWNC : ON
SB : OFF XB : HI
PYR : .10 /.10/ .25
GYROS : AB ON

FDS MODE
XB DATA RATE (MI)

CR-5T

160(32)

31

1315 |----- 14 [D] -----| 1840

0210 - 0745 |----- 63 [D] -----|

HPTXR

----- 25 [D] -----| 1335

DSN COVERAGE

32

1340 |----- 43 [D] -----| 1840

2130 |----- 43 [D] -----| 0200

HPTXR

RTLT : 18h 33m 8s

1200 RTLT=18h 33m 6s

0000 RTLT=18h 33m 4s

VOYAGER 2

FDSL : 11AF

CCSL : B115
TWNC : ON
SB : OFF XB : HI
PYR : .05 /.10 / .25
GYROS : OFF

FDS MODE
XB DATA RATE (MI)

CR-5T

160(32)

VOYAGER COVERAGE

----- ON CALL -----

NOTES

UTC: 8 9 10 11 12 13 14 15 16 17 18 19 20 21 22 23 0 1 2 3 4 5 6 7 8

ISSUE DATE: 03/06/02 - 09:44

PST: 0 1 2 3 4 5 6 7 8 9 10 11 12 13 14 15 16 17 18 19 20 21 22 23 0

MONDAY
MARCH 18, 2002
077-078

UTC: 8 9 10 11 12 13 14 15 16 17 18 19 20 21 22 23 0 1 2 3 4 5 6 7 8

RTLTL : 23h 15m 46s

1200 RTLTL=23h 15m 44s

0000 RTLTL=23h 15m 42s

VOYAGER 1

FDSL : 11AF

CCSL : A042
TWNC : ON
SB : OFF XB : HI
PYR : .10 /.10/ .25
GYROS : AB ON

↓ 0040 AAI
0043 |----- MAGROL -----| 0639

U/L 0550 |---|
TLC (SHORT-FORM) |-----|

RAI 0632 ↓
CRU 0639 ↓
GYROS OFF 0639 ↓

▼ 0300 DUMMY (02:16)

FDS MODE
XB DATA RATE (MI)

CR-5T
160(32)

31 |----- 25 [D] -----| 0840 - 1800
2345 - 0750 |----- 63 [T] -----|

DSN COVERAGE
HPTXR

32 |----- 2145 |----- 34 [o] -----| 0425

HPTXR

1750 |----- 45 [D] -----| 2150

RTLTL : 18h 33m 4s

1200 RTLTL=18h 33m 0s

0000 RTLTL=18h 32m 58s

VOYAGER 2

FDSL : 11AF

CCSL : B115
TWNC : ON
SB : OFF XB : HI
PYR : .05 /.10 / .25
GYROS : OFF

FDS MODE
XB DATA RATE (MI)

CR-5T
160(32)

VOYAGER COVERAGE

----- ON CALL ----- |----- VGR -----|

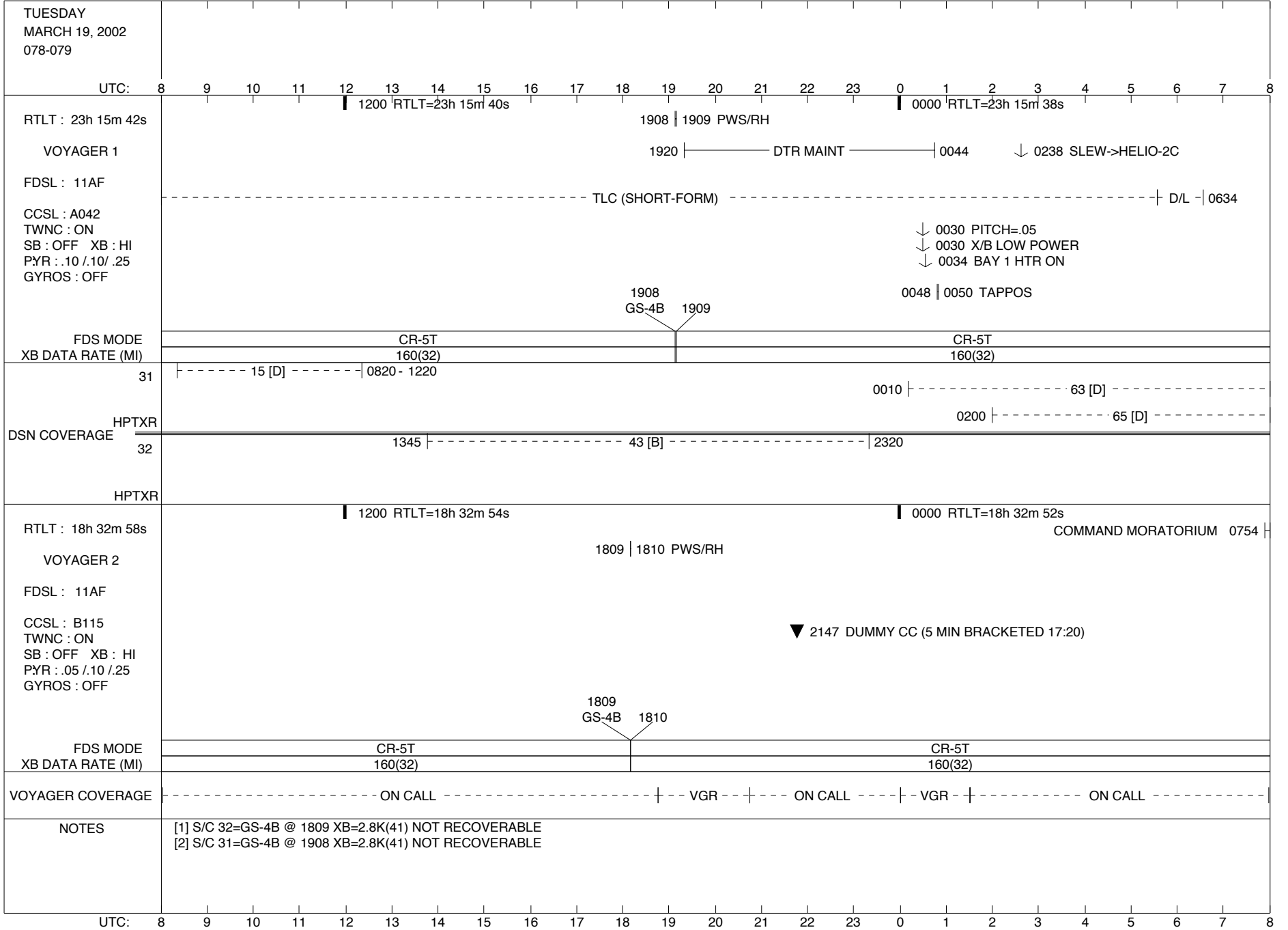
NOTES

[1] S/C 31 - D/L AGC VARIATIONS EXPECTED DURING MAGROL (0043-0639)

UTC: 8 9 10 11 12 13 14 15 16 17 18 19 20 21 22 23 0 1 2 3 4 5 6 7 8

ISSUE DATE: 03/06/02 - 09:44

PST: 0 1 2 3 4 5 6 7 8 9 10 11 12 13 14 15 16 17 18 19 20 21 22 23 0



ISSUE DATE: 03/06/02 - 09:44

PST: 0 1 2 3 4 5 6 7 8 9 10 11 12 13 14 15 16 17 18 19 20 21 22 23 0

WEDNESDAY
MARCH 20, 2002
079-080

UTC: 8 9 10 11 12 13 14 15 16 17 18 19 20 21 22 23 0 1 2 3 4 5 6 7 8

RTLT : 23h 15m 38s

1200 RTLT=23h 15m 36s

0000 RTLT=23h 15m 34s

↓ 0238 SLEW->HELIO-3C

VOYAGER 1

FDSL : 11AF

CCSL : A042
TWNC : ON
SB : OFF XB : LOW
PYR : .05 /.10 /.25
GYROS : OFF

FDS MODE
XB DATA RATE (MI)

CR-5T
160(32)

31 |----- 15 [D] -----| 0820 - 1515
--| 0845 63 [D] | 1455 |---- 25 [D] ----| 1750
HPTXR |----- 0840 65 [D] | 0200 |----- 63 [D] -----| 0645

DSN COVERAGE

32 |----- 1630 |----- 45 [D] -----| 2145
HPTXR |----- 2130 |----- 43 [D] -----| 0210

RTLT : 18h 32m 52s

1200 RTLT=18h 32m 48s

0000 RTLT=18h 32m 46s

----- COMMAND MORATORIUM -----

↓ 0156 X/B LOW POWER
↓ 0200 BAY 1 HTR ON

VOYAGER 2

FDSL : 11AF

CCSL : B115
TWNC : ON
SB : OFF XB : HI
PYR : .05 /.10 /.25
GYROS : OFF

FDS MODE
XB DATA RATE (MI)

CR-5T
160(32)

VOYAGER COVERAGE

----- ON CALL -----| VGR |----- ON CALL -----|

NOTES

UTC: 8 9 10 11 12 13 14 15 16 17 18 19 20 21 22 23 0 1 2 3 4 5 6 7 8

ISSUE DATE: 03/06/02 - 09:44

PST: 0 1 2 3 4 5 6 7 8 9 10 11 12 13 14 15 16 17 18 19 20 21 22 23 0

THURSDAY
MARCH 21, 2002
080-081

UTC: 8 9 10 11 12 13 14 15 16 17 18 19 20 21 22 23 0 1 2 3 4 5 6 7 8

RTLT : 23h 15m 34s

1200 RTLT=23h 15m 32s

0000 RTLT=23h 15m 30s

↓ 0238 SLEW->HELIO-4C

VOYAGER 1

FDSL : 11AF

CCSL : A042
TWNC : ON
SB : OFF XB : LOW
PYR : .05 /.10/ .25
GYROS : OFF

FDS MODE
XB DATA RATE (MI)

CR-5T

160(32)

31

0920 |-----25 [D]-----| 1745

0205 - 0715 |-----63 [D]-----|

DSN COVERAGE
HPTXR

32

1505 |-----43 [D]-----| 2045

HPTXR

RTLT : 18h 32m 46s

1200 RTLT=18h 32m 42s

0000 RTLT=18h 32m 40s

-----COMMAND MORATORIUM-----

VOYAGER 2

FDSL : 11AF

CCSL : B115
TWNC : ON
SB : OFF XB : LOW
PYR : .05 /.10/ .25
GYROS : OFF

FDS MODE
XB DATA RATE (MI)

CR-5T

160(32)

VOYAGER COVERAGE

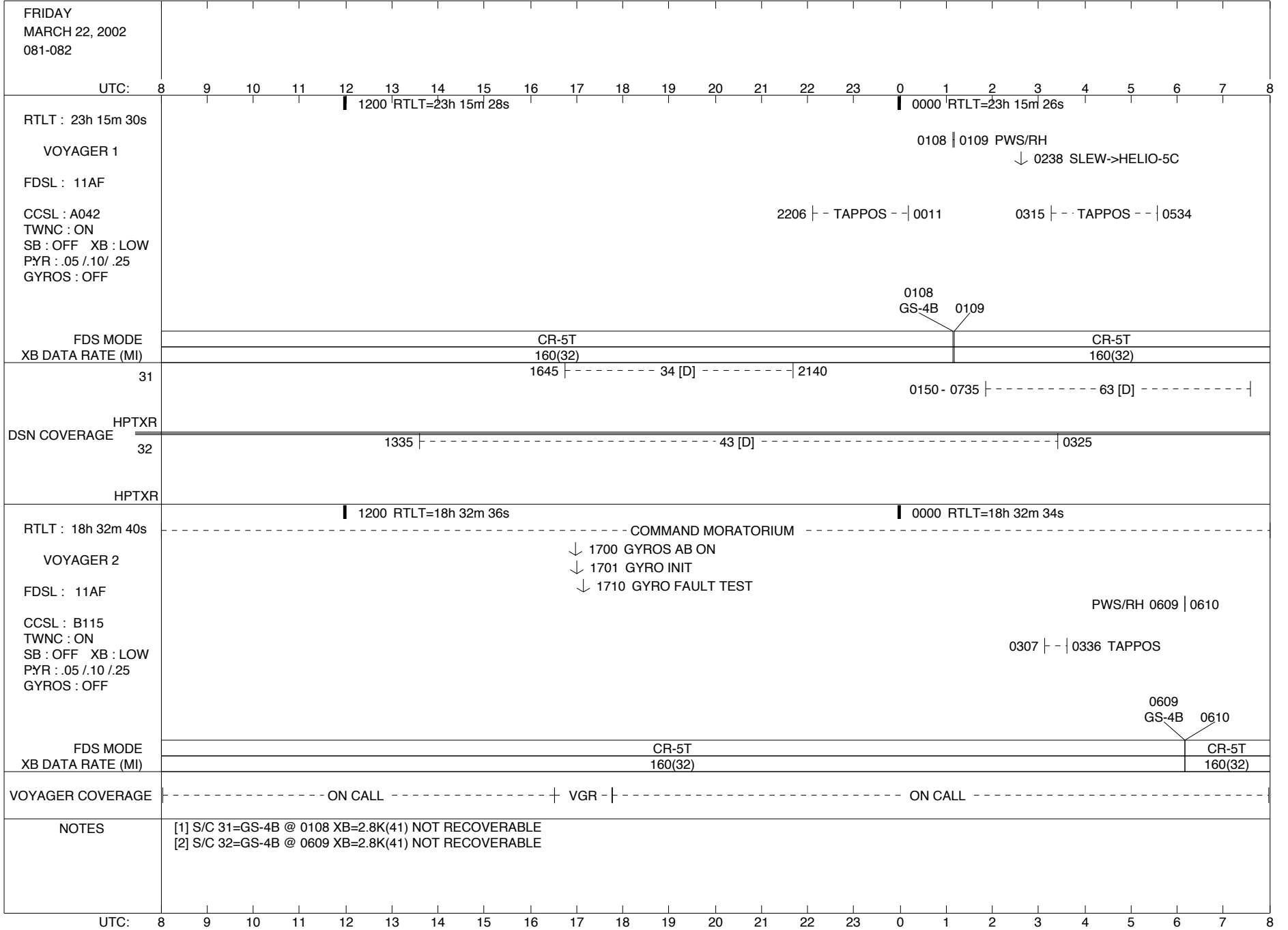
-----ON CALL-----

NOTES

UTC: 8 9 10 11 12 13 14 15 16 17 18 19 20 21 22 23 0 1 2 3 4 5 6 7 8

ISSUE DATE: 03/06/02 - 09:44

PST: 0 1 2 3 4 5 6 7 8 9 10 11 12 13 14 15 16 17 18 19 20 21 22 23 0



ISSUE DATE: 03/06/02 - 09:44

PST: 0 1 2 3 4 5 6 7 8 9 10 11 12 13 14 15 16 17 18 19 20 21 22 23 0

SATURDAY
MARCH 23, 2002
082-083

UTC: 8 9 10 11 12 13 14 15 16 17 18 19 20 21 22 23 0 1 2 3 4 5 6 7 8

RTLT : 23h 15m 26s

1200 RTLT=23h 15m 24s

0000 RTLT=23h 15m 22s

↓ 0238 SLEW->HELIO-6C

VOYAGER 1

FDSL : 11AF

CCSL : A042
TWNC : ON
SB : OFF XB : LOW
PYR : .05 /.10/ .25
GYROS : OFF

FDS MODE
XB DATA RATE (MI)

CR-5T
160(32)

31 |----- 25 [D] -----| 0820 - 1730

DSN COVERAGE
HPTXR

32 |----- 1330 |----- 43 [D] -----| 2315

HPTXR

RTLT : 18h 32m 34s

1200 RTLT=18h 32m 30s

0000 RTLT=18h 32m 28s

----- COMMAND MORATORIUM ----- | 2228

VOYAGER 2

FDSL : 11AF

CCSL : B115
TWNC : ON
SB : OFF XB : LOW
PYR : .05 /.10/ .25
GYROS : AB ON

| 0817 - 0832 TAPPOS

FDS MODE
XB DATA RATE (MI)

CR-5T
160(32)

VOYAGER COVERAGE

----- ON CALL -----

NOTES

UTC: 8 9 10 11 12 13 14 15 16 17 18 19 20 21 22 23 0 1 2 3 4 5 6 7 8

ISSUE DATE: 03/06/02 - 09:44

PST: 0 1 2 3 4 5 6 7 8 9 10 11 12 13 14 15 16 17 18 19 20 21 22 23 0

SUNDAY
MARCH 24, 2002
083-084

UTC: 8 9 10 11 12 13 14 15 16 17 18 19 20 21 22 23 0 1 2 3 4 5 6 7 8

RTLTL : 23h 15m 22s

1200 RTLTL=23h 15m 22s

0000 RTLTL=23h 15m 20s

↓ 0238 SLEW->HELIO-7C

VOYAGER 1

FDSL : 11AF

CCSL : A042
TWNC : ON
SB : OFF XB : LOW
PYR : .05 /.10/.25
GYROS : OFF

FDS MODE
XB DATA RATE (MI)

CR-5T

160(32)

31

-----25 [D]-----| 0820 - 1515

1455 |-----43 [D]-----| 2315

HPTXR

DSN COVERAGE

32

1410 |-----34 [D]-----| 2045

HPTXR

RTLTL : 18h 32m 28s

1200 RTLTL=18h 32m 24s

0000 RTLTL=18h 32m 20s

VOYAGER 2

FDSL : 11AF

CCSL : B115
TWNC : ON
SB : OFF XB : LOW
PYR : .05 /.10/.25
GYROS : AB ON

FDS MODE
XB DATA RATE (MI)

CR-5T

160(32)

VOYAGER COVERAGE

-----ON CALL-----

NOTES

UTC: 8 9 10 11 12 13 14 15 16 17 18 19 20 21 22 23 0 1 2 3 4 5 6 7 8