

ISSUE DATE: 02/04/02 - 10:59

PST: 0 1 2 3 4 5 6 7 8 9 10 11 12 13 14 15 16 17 18 19 20 21 22 23 0

THURSDAY  
JANUARY 31, 2002  
031-032

UTC: 8 9 10 11 12 13 14 15 16 17 18 19 20 21 22 23 0 1 2 3 4 5 6 7 8

RTLTL : 23h 18m 44s

1200 RTLTL=23h 18m 42s

0000 RTLTL=23h 18m 40s

VOYAGER 1

S/C 31 STATUS

FDSSL : 11AF

FDS CLOCK DRIFT:  
ADD TO S/C EVENT  
ERT: -23.401 sec

CCSL : A041  
TWNC : ON  
SB : OFF XB : HIGH  
PYR : .05/ .10/ .25  
GYROS : ON

ROLLREF = RIGIL  
KENTAURUS

FDS MODE  
XB DATA RATE (MI)

CR-5T

160 (32)

31 | 0825 65 [D]

1125 |----- 25 [D] -----| 1925

0345 |----- 65 [D] -----|

DSN COVERAGE  
HPTXR

32

1645 |----- 45 [D] -----| 2045

HPTXR

RTLTL : 18h 34m 44s

1200 RTLTL=18h 34m 46s

0000 RTLTL=18h 34m 48s

VOYAGER 2

S/C 32 STATUS

FDSSL : 11AF

FDS CLOCK DRIFT:  
ADD TO S/C EVENT  
ERT: -98.734 sec

CCSL : B114  
TWNC : ON  
SB : OFF XB : LOW  
PYR : .05/ .10 / .25  
GYROS : OFF

ROLLREF = VEGA

FDS MODE  
XB DATA RATE (MI)

CR-5T

160(32)

VOYAGER COVERAGE

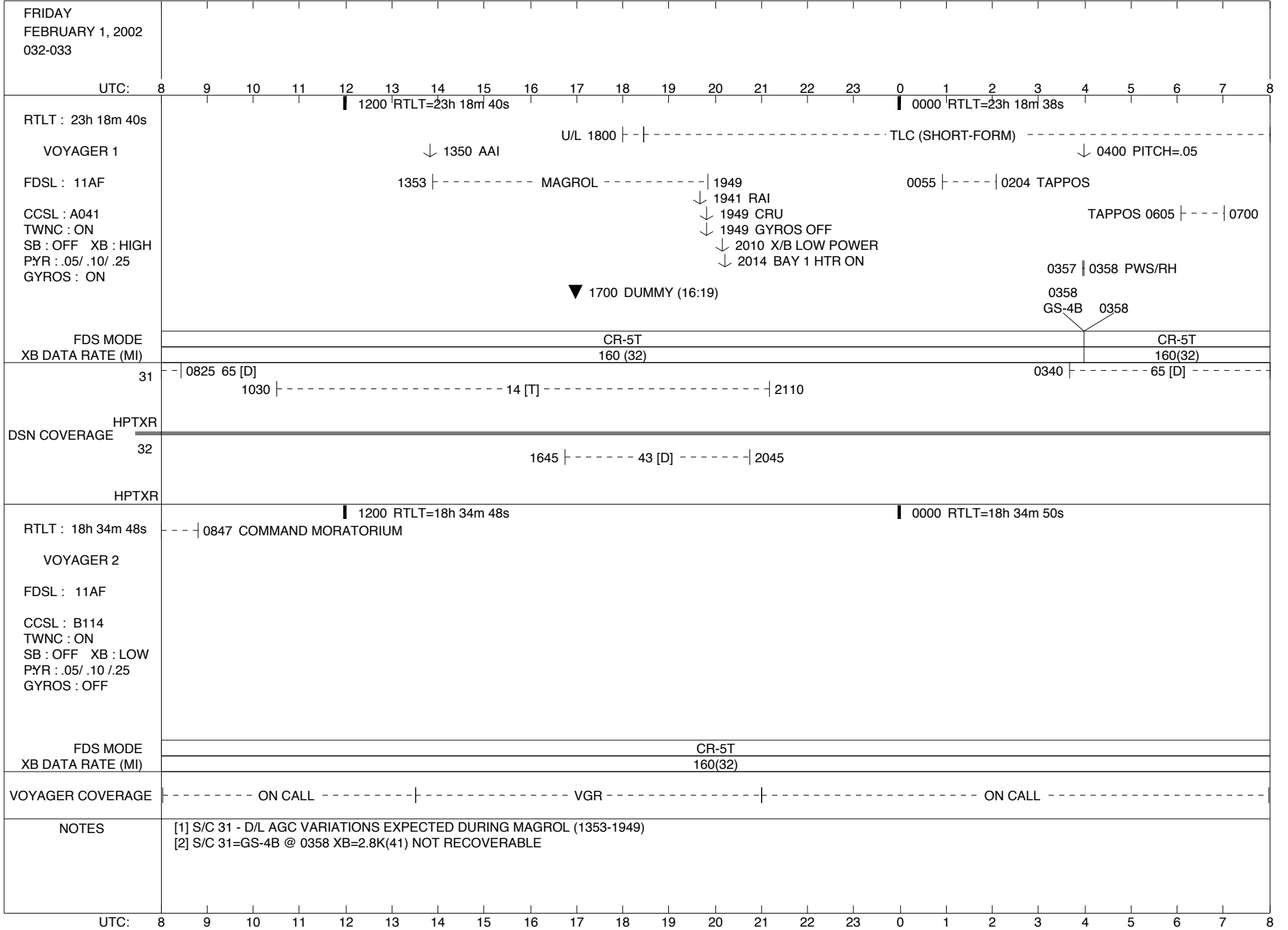
ON CALL

NOTES

UTC: 8 9 10 11 12 13 14 15 16 17 18 19 20 21 22 23 0 1 2 3 4 5 6 7 8

ISSUE DATE: 02/04/02 - 10:59

PST: 0 1 2 3 4 5 6 7 8 9 10 11 12 13 14 15 16 17 18 19 20 21 22 23 0



ISSUE DATE: 02/04/02 - 10:59

PST: 0 1 2 3 4 5 6 7 8 9 10 11 12 13 14 15 16 17 18 19 20 21 22 23 0

SATURDAY  
FEBRUARY 2, 2002  
033-034

UTC: 8 9 10 11 12 13 14 15 16 17 18 19 20 21 22 23 0 1 2 3 4 5 6 7 8

RTLTL : 23h 18m 38s

1200 RTLTL=23h 18m 36s

0000 RTLTL=23h 18m 36s

VOYAGER 1

----- TLC (SHORT-FORM) ----- | D/L - | 1846

↓ 1440 SLEW->HELIO-1B

↓ 0240 SLEW->HELIO-2B

FDSL : 11AF

CCSL : A041  
TWNC : ON  
SB : OFF XB : LOW  
PYR : .05 / .10 / .25  
GYROS : OFF

FDS MODE  
XB DATA RATE (MI)

CR-5T

160(32)

31 --- | 0840 65 [D]

1555 |----- 25 [D] ----- | 1955

0340 |----- 65 [D] -----

DSN COVERAGE  
HPTXR

32

1640 |----- 43 [D] ----- | 2155

HPTXR

RTLTL : 18h 34m 50s

1200 RTLTL=18h 34m 50s

0000 RTLTL=18h 34m 52s

VOYAGER 2

FDSL : 11AF

CCSL : B114  
TWNC : ON  
SB : OFF XB : LOW  
PYR : .05 / .10 / .25  
GYROS : OFF

FDS MODE  
XB DATA RATE (MI)

CR-5T

160(32)

VOYAGER COVERAGE

----- ON CALL -----

NOTES

UTC: 8 9 10 11 12 13 14 15 16 17 18 19 20 21 22 23 0 1 2 3 4 5 6 7 8

ISSUE DATE: 02/04/02 - 10:59

PST: 0 1 2 3 4 5 6 7 8 9 10 11 12 13 14 15 16 17 18 19 20 21 22 23 0

SUNDAY  
FEBRUARY 3, 2002  
034-035

UTC: 8 9 10 11 12 13 14 15 16 17 18 19 20 21 22 23 0 1 2 3 4 5 6 7 8

RTLT : 23h 18m 36s

1200 RTLT=23h 18m 34s

0000 RTLT=23h 18m 32s

VOYAGER 1

↓ 1440 SLEW->HELIO-3B

↓ 0240 SLEW->HELIO-4B

FDSL : 11AF

CCSL : A041  
TWNC : ON  
SB : OFF XB : LOW  
PYR : .05 / .10 / .25  
GYROS : OFF

FDS MODE  
XB DATA RATE (MI)

CR-5T

160(32)

31 | 0825 65 [D]

1110 |----- 25 [D] -----| 2020

0335 |----- 65 [D] -----|

DSN COVERAGE  
HPTXR

32

1645 |----- 45 [D] -----|

HPTXR

RTLT : 18h 34m 52s

1200 RTLT=18h 34m 52s

0000 RTLT=18h 34m 52s

VOYAGER 2

FDSL : 11AF

CCSL : B114  
TWNC : ON  
SB : OFF XB : LOW  
PYR : .05 / .10 / .25  
GYROS : OFF

FDS MODE  
XB DATA RATE (MI)

CR-5T

160(32)

VOYAGER COVERAGE

----- ON CALL -----

NOTES

UTC: 8 9 10 11 12 13 14 15 16 17 18 19 20 21 22 23 0 1 2 3 4 5 6 7 8

ISSUE DATE: 02/04/02 - 10:59

PST: 0 1 2 3 4 5 6 7 8 9 10 11 12 13 14 15 16 17 18 19 20 21 22 23 0

MONDAY  
FEBRUARY 4, 2002  
035-036

UTC: 8 9 10 11 12 13 14 15 16 17 18 19 20 21 22 23 0 1 2 3 4 5 6 7 8

RTLT : 23h 18m 32s

1200 RTLT=23h 18m 32s

0000 RTLT=23h 18m 30s

VOYAGER 1

↓ 1440 SLEW->HELIO-5B

↓ 0240 SLEW->HELIO-6B

FDSL : 11AF

CCSL : A041  
TWNC : ON  
SB : OFF XB : LOW  
PYR : .05 / .10 / .25  
GYROS : OFF

FDS MODE  
XB DATA RATE (MI)

CR-5T

160(32)

31 | 0815 65 [D]

1125 |----- 25 [D] -----| 1650

DSN COVERAGE  
HPTXR

32 | 0815 45 [D]

1715 |----- 34 [o] -----| 2245

0200 |-- 34 [o] --| 0355

HPTXR

RTLT : 18h 34m 52s

1200 RTLT=18h 34m 54s

0000 RTLT=18h 34m 54s

VOYAGER 2

FDSL : 11AF

CCSL : B114  
TWNC : ON  
SB : OFF XB : LOW  
PYR : .05 / .10 / .25  
GYROS : OFF

FDS MODE  
XB DATA RATE (MI)

CR-5T

160(32)

VOYAGER COVERAGE

----- ON CALL -----

NOTES

UTC: 8 9 10 11 12 13 14 15 16 17 18 19 20 21 22 23 0 1 2 3 4 5 6 7 8

ISSUE DATE: 02/04/02 - 10:59

PST: 0 1 2 3 4 5 6 7 8 9 10 11 12 13 14 15 16 17 18 19 20 21 22 23 0

TUESDAY FEBRUARY 5, 2002 036-037	
UTC: 8 9 10 11 12 13 14 15 16 17 18 19 20 21 22 23 0 1 2 3 4 5 6 7 8	
RTLT : 23h 18m 30s  VOYAGER 1  FDSL : 11AF  CCSL : A041 TWNC : ON SB : OFF XB : LOW PYR : .05 / .10 / .25 GYROS : OFF	1200 RTLT=23h 18m 28s  ↓ 1440 SLEW->HELIO-7B  2133   2134 PWS/RH  ↓ 0240 SLEW->HELIO-8B  2133 GS-4B 2134
FDS MODE XB DATA RATE (MI)	CR-5T 160(32)
31	1120  ----- 25 [D] -----  1810 1930  ----- 34 [D] -----  0055 0330  ----- 65 [D] -----
DSN COVERAGE HPTXR	1625  ----- 43 [o] -----  0120
HPTXR	1200 RTLT=18h 34m 54s  0000 RTLT=18h 34m 56s
RTLT : 18h 34m 54s  VOYAGER 2  FDSL : 11AF  CCSL : B114 TWNC : ON SB : OFF XB : LOW PYR : .05 / .10 / .25 GYROS : OFF	2034   2035 PWS/RH 2148   PLSCAL -  2330 2148  --- MAGCAL ---  0050 2148  ---- PESCAL ----  0108  2034 GS-4B 2035
FDS MODE XB DATA RATE (MI)	CR-5T 160(32)
VOYAGER COVERAGE	ON CALL
NOTES	[1] S/C 32=GS-4B @ 2034 XB=2.8K(41) NOT RECOVERABLE [2] S/C 31=GS-4B @ 2133 XB=2.8K(41) NOT RECOVERABLE
UTC: 8 9 10 11 12 13 14 15 16 17 18 19 20 21 22 23 0 1 2 3 4 5 6 7 8	

ISSUE DATE: 02/04/02 - 10:59

PST: 0 1 2 3 4 5 6 7 8 9 10 11 12 13 14 15 16 17 18 19 20 21 22 23 0

WEDNESDAY  
FEBRUARY 6, 2002  
037-038

UTC: 8 9 10 11 12 13 14 15 16 17 18 19 20 21 22 23 0 1 2 3 4 5 6 7 8

RTLTL : 23h 18m 28s

1200 RTLTL=23h 18m 26s

0000 RTLTL=23h 18m 24s

VOYAGER 1

↓ 1440 SLEW->HELIO-9B

↓ 0240 SLEW->HELIO-10B

FDSL : 11AF

▼ 1600 DUMMY (15:18)

CCSL : A041  
TWNC : ON  
SB : OFF XB : LOW  
PYR : .05 / .10 / .25  
GYROS : OFF

FDS MODE  
XB DATA RATE (MI)

CR-5T

160(32)

31 65 [D] | 0915

1230 | ----- 14 ----- | 1640

0330 | ----- 65 [D] -----

1620 | ----- 25 [D] ----- | 2025

DSN COVERAGE  
HPTXR

1710 | ----- 34 [D] ----- | 2055

2050 | ----- 43 [B] ----- | 0240

HPTXR

RTLTL : 18h 34m 56s

1200 RTLTL=18h 34m 56s

0000 RTLTL=18h 34m 56s

VOYAGER 2

▼ 2355 CR-5T (18:31)

FDSL : 11AF

▼ 2146 EL-40 (16:21)

CCSL : B114  
TWNC : ON  
SB : OFF XB : LOW  
PYR : .05 / .10 / .25  
GYROS : OFF

▼ 2200 CCSL B115 (16:36)

▼ 2227 MRO FOR CHKSUM CORR(17:03)

▼ 2246 RFLOSS MOD (17:22)

▼ 2310 TLM RST (17:45)

▼ 2327 RFLOSS MOD MRO (18:02:45)

FDS MODE  
XB DATA RATE (MI)

CR-5T

160(32)

VOYAGER COVERAGE

----- ON CALL ----- | VGR -- | ----- ON CALL ----- | ----- VGR ----- | ----- ON CALL -----

NOTES

UTC: 8 9 10 11 12 13 14 15 16 17 18 19 20 21 22 23 0 1 2 3 4 5 6 7 8

ISSUE DATE: 02/04/02 - 10:59

PST: 0 1 2 3 4 5 6 7 8 9 10 11 12 13 14 15 16 17 18 19 20 21 22 23 0

THURSDAY  
FEBRUARY 7, 2002  
038-039

UTC: 8 9 10 11 12 13 14 15 16 17 18 19 20 21 22 23 0 1 2 3 4 5 6 7 8

RTLT : 23h 18m 24s

1200 RTLT=23h 18m 22s

0000 RTLT=23h 18m 20s

VOYAGER 1

↓ 1440 SLEW->MIDPNT-B

↓ 0340 SLEW->HELIO-11B

FDSL : 11AF

CCSL : A041  
TWNC : ON  
SB : OFF XB : LOW  
PYR : .05 / .10 / .25  
GYROS : OFF

FDS MODE  
XB DATA RATE (MI)

CR-5T

160(32)

31 65 [D] | 0915

1055 |----- 15 [D] -----| 1545

0330 |----- 65 [D] -----

1935 |----- 34 [D] -----| 0030

DSN COVERAGE  
HPTXR

32

1615 |----- 43 [D] -----| 0325

HPTXR

RTLT : 18h 34m 56s

1200 RTLT=18h 34m 56s

0000 RTLT=18h 34m 58s

VOYAGER 2

\*  
1640 | 1645 CCS CHKSUM

\*  
1705 | | 1720 MRO FOR CHKSUM CORR

\*  
1804 | - | 1828 MRO FOR RFLOSS MOD

FDSL : 11AF

CCSL : B114  
TWNC : ON  
SB : OFF XB : LOW  
PYR : .05 / .10 / .25  
GYROS : OFF

\*  
1622                      \*  
1832

FDS MODE  
XB DATA RATE (MI)

CR-5T

160(32)

EL-40

40(30)

CR-5T

160(32)

VOYAGER COVERAGE

----- ON CALL -----

----- VGR -----

----- ON CALL -----

NOTES

UTC: 8 9 10 11 12 13 14 15 16 17 18 19 20 21 22 23 0 1 2 3 4 5 6 7 8



ISSUE DATE: 02/04/02 - 10:59

PST: 0 1 2 3 4 5 6 7 8 9 10 11 12 13 14 15 16 17 18 19 20 21 22 23 0

FRIDAY  
FEBRUARY 8, 2002  
039-040

UTC: 8 9 10 11 12 13 14 15 16 17 18 19 20 21 22 23 0 1 2 3 4 5 6 7 8

RTLTL : 23h 18m 20s

1200 RTLTL=23h 18m 20s

0000 RTLTL=23h 18m 18s

VOYAGER 1

↓ 1440 SLEW->HELIO-12B

↓ 0240 SLEW->HELIO-13B

FDSL : 11AF

0333 | 0334 PWS/RH

CCSL : A041  
TWNC : ON  
SB : OFF XB : LOW  
PYR : .05 / .10 / .25  
GYROS : OFF

U/L 0515 | - - |  
TLC (SHORT-FORM) | - - - - -

0031 | - - - | 0112 TAPPOS

TAPPOS 0541 | - - | 0608

0333  
GS-4B 0334

FDS MODE  
XB DATA RATE (MI)

CR-5T

160(32)

CR-5T

160(32)

31 65 [D] - | 0930

1045 | - - - - - 15 [D] - - - - - | 1950

0455 | - - - - - 63 [T] - - - - -

DSN COVERAGE  
HPTXR

32

1615 | - - - - - 43 [D] - - - - - | 0325

HPTXR

RTLTL : 18h 34m 58s

1200 RTLTL=18h 34m 58s

0000 RTLTL=18h 34m 58s

VOYAGER 2

FDSL : 11AF

CCSL : B114  
TWNC : ON  
SB : OFF XB : LOW  
PYR : .05 / .10 / .25  
GYROS : OFF

FDS MODE  
XB DATA RATE (MI)

CR-5T

160(32)

VOYAGER COVERAGE

ON CALL

NOTES

[1] S/C 31=GS-4B @ 0333 XB=2.8K(41) NOT RECOVERABLE

UTC: 8 9 10 11 12 13 14 15 16 17 18 19 20 21 22 23 0 1 2 3 4 5 6 7 8

ISSUE DATE: 02/04/02 - 10:59

PST: 0 1 2 3 4 5 6 7 8 9 10 11 12 13 14 15 16 17 18 19 20 21 22 23 0

SATURDAY  
FEBRUARY 9, 2002  
040-041

UTC: 8 9 10 11 12 13 14 15 16 17 18 19 20 21 22 23 0 1 2 3 4 5 6 7 8

RTLTL : 23h 18m 18s

1200 RTLTL=23h 18m 16s

0000 RTLTL=23h 18m 14s

VOYAGER 1

↓ 1440 SLEW->HELIO-14B

↓ 0240 SLEW->HELIO-15B

FDSL : 11AF

CCSL : A041

TWNC : ON

SB : OFF XB : LOW

PYR : .05 / .10 / .25

GYROS : OFF

TLC (SHORT-FORM)

D/L 0601

FDS MODE

CR-5T

XB DATA RATE (MI)

160(32)

31

63 [T] 0935

0435 63 [D]

1055 15 [D]

1810 1830

43 [D] 0155

DSN COVERAGE

HPTXR

1715 34 [o] 0430

32

HPTXR

RTLTL : 18h 34m 58s

1200 RTLTL=18h 34m 58s

0000 RTLTL=18h 34m 58s

VOYAGER 2

FDSL : 11AF

CCSL : B114

TWNC : ON

SB : OFF XB : LOW

PYR : .05 / .10 / .25

GYROS : OFF

FDS MODE

CR-5T

XB DATA RATE (MI)

160(32)

VOYAGER COVERAGE

ON CALL

NOTES

UTC: 8 9 10 11 12 13 14 15 16 17 18 19 20 21 22 23 0 1 2 3 4 5 6 7 8

ISSUE DATE: 02/04/02 - 10:59

PST: 0 1 2 3 4 5 6 7 8 9 10 11 12 13 14 15 16 17 18 19 20 21 22 23 0

SUNDAY  
FEBRUARY 10, 2002  
041-042

UTC: 8 9 10 11 12 13 14 15 16 17 18 19 20 21 22 23 0 1 2 3 4 5 6 7 8

RTLT : 23h 18m 14s

1200 RTLT=23h 18m 12s

0000 RTLT=23h 18m 10s

VOYAGER 1

↓ 1440 SLEW->HELIO-16B

↓ 0240 SLEW->HELIO-17B

FDSL : 11AF

CCSL : A041  
TWNC : ON  
SB : OFF XB : LOW  
PYR : .05 / .10 / .25  
GYROS : OFF

FDS MODE  
XB DATA RATE (MI)

CR-5T

160(32)

31 63 [D] | 0915

1325 | ----- 25 [D] ----- | 2010

0545 | --- 54 [D] ---

2045 | ----- 43 [D] ----- | 2345

HPTXR  
DSN COVERAGE

32

1620 | ----- 45 [D] ----- | 0000

HPTXR

RTLT : 18h 34m 58s

1200 RTLT=18h 34m 58s

0000 RTLT=18h 34m 58s

VOYAGER 2

FDSL : 11AF

CCSL : B114  
TWNC : ON  
SB : OFF XB : LOW  
PYR : .05 / .10 / .25  
GYROS : OFF

FDS MODE  
XB DATA RATE (MI)

CR-5T

160(32)

VOYAGER COVERAGE

----- ON CALL -----

NOTES

UTC: 8 9 10 11 12 13 14 15 16 17 18 19 20 21 22 23 0 1 2 3 4 5 6 7 8

ISSUE DATE: 02/04/02 - 10:59

PST: 0 1 2 3 4 5 6 7 8 9 10 11 12 13 14 15 16 17 18 19 20 21 22 23 0

MONDAY  
FEBRUARY 11, 2002  
042-043

UTC: 8 9 10 11 12 13 14 15 16 17 18 19 20 21 22 23 0 1 2 3 4 5 6 7 8

RTLTL : 23h 18m 10s

1200 RTLTL=23h 18m 8s

0000 RTLTL=23h 18m 8s

VOYAGER 1

↓ 1440 SLEW->HELIO-18B

↓ 0240 SLEW->HELIO-19B

FDSL : 11AF

CCSL : A041  
TWNC : ON  
SB : OFF XB : LOW  
PYR : .05 / .10 / .25  
GYROS : OFF

FDS MODE  
XB DATA RATE (MI)

CR-5T  
160(32)

31

54 [D] ----- | 1125

1055 |----- 25 [D] ----- | 1900

DSN COVERAGE  
HPTXR

32

1650 |----- 45 [D] ----- | 2045

2235 |----- 34 [D] ----- | 0445

HPTXR

RTLTL : 18h 34m 58s

1200 RTLTL=18h 34m 58s

0000 RTLTL=18h 34m 58s

VOYAGER 2

↓ 1900 BEGIN SEQUENCE B115

FDSL : 11AF

CCSL : B114  
TWNC : ON  
SB : OFF XB : LOW  
PYR : .05 / .10 / .25  
GYROS : OFF

FDS MODE  
XB DATA RATE (MI)

CR-5T  
160(32)

VOYAGER COVERAGE

----- ON CALL -----

NOTES

UTC: 8 9 10 11 12 13 14 15 16 17 18 19 20 21 22 23 0 1 2 3 4 5 6 7 8

ISSUE DATE: 02/04/02 - 10:59

PST: 0 1 2 3 4 5 6 7 8 9 10 11 12 13 14 15 16 17 18 19 20 21 22 23 0

<p>TUESDAY FEBRUARY 12, 2002 043-044</p>	
<p>UTC: 8 9 10 11 12 13 14 15 16 17 18 19 20 21 22 23 0 1 2 3 4 5 6 7 8</p> <p>RTLTL : 23h 18m 8s</p> <p>VOYAGER 1</p> <p>FDSL : 11AF</p> <p>CCSL : A041 TWNC : ON SB : OFF XB : LOW PYR : .05 / .10 / .25 GYROS : OFF</p> <p>FDS MODE XB DATA RATE (MI)</p>	<p>1200 RTLTL=23h 18m 6s</p> <p>0000 RTLTL=23h 18m 4s</p> <p>U/L 1730   -   - - - - - TLC (SHORT-FORM) - - - - -</p> <p>↓ 1440 SLEW-&gt;HELIO-20B</p> <p>2109   2110 PWS/RH</p> <p>▼ 1600 DUMMY (15:18)</p> <p>2109 GS-4B 2110</p> <p>CR-5T 160(32)</p> <p>CR-5T 160(32)</p> <p>1205   - - - - - 14 [T] - - - - - 1835</p> <p>0300   - - - - - 65 [D] - - - - -</p> <p>HPTXR</p> <p>DSN COVERAGE</p> <p>32</p> <p>HPTXR</p> <p>1600   - - - - - 43 [B] - - - - - 2350</p>
<p>RTLTL : 18h 34m 58s</p> <p>VOYAGER 2</p> <p>FDSL : 11AF</p> <p>CCSL : B115 TWNC : ON SB : OFF XB : LOW PYR : .05 / .10 / .25 GYROS : OFF</p> <p>FDS MODE XB DATA RATE (MI)</p> <p>VOYAGER COVERAGE</p>	<p>1200 RTLTL=18h 34m 58s</p> <p>0000 RTLTL=18h 34m 58s</p> <p>2010   2011 PWS/RH</p> <p>▼ 2247 DUMMY (5 MIN BRACKETED 17:22)</p> <p>2010 GS-4B 2011</p> <p>CR-5T 160(32)</p> <p>CR-5T 160(32)</p> <p>ON CALL - - - - - VGR - - - - - ON CALL - - - - - VGR - - - - - ON CALL - - - - -</p>
<p>NOTES</p>	<p>[1] S/C 32=GS-4B @ 2010 XB=2.8K(41) NOT RECOVERABLE [2] S/C 31=GS-4B @ 2109 XB=2.8K(41) NOT RECOVERABLE</p>

UTC: 8 9 10 11 12 13 14 15 16 17 18 19 20 21 22 23 0 1 2 3 4 5 6 7 8

ISSUE DATE: 02/04/02 - 10:59

PST: 0 1 2 3 4 5 6 7 8 9 10 11 12 13 14 15 16 17 18 19 20 21 22 23 0

WEDNESDAY  
FEBRUARY 13, 2002  
044-045

UTC: 8 9 10 11 12 13 14 15 16 17 18 19 20 21 22 23 0 1 2 3 4 5 6 7 8

RTLTL : 23h 18m 4s

1200 RTLTL=23h 18m 2s

0000 RTLTL=23h 18m 0s

VOYAGER 1

----- TLC (SHORT-FORM) ----- + D/L -| 1816

↓ 2340 SLEW->HELIO-18A

FDSL : 11AF

↓ 1140 SLEW->HELIO-19A

CCSL : A041  
TWNC : ON  
SB : OFF XB : LOW  
PYR : .05 / .10 / .25  
GYROS : OFF

FDS MODE  
XB DATA RATE (MI)

CR-5T

160(32)

31 0805 65 [D]

0320 |----- 65 [D] -----

1020 |----- 15 [D] ----- | 1945

DSN COVERAGE  
HPTXR

32

1635 |----- 34 [D] ----- | 0235

HPTXR

RTLTL : 18h 34m 58s

1200 RTLTL=18h 34m 56s

0000 RTLTL=18h 34m 56s

VOYAGER 2

FDSL : 11AF

CCSL : B115  
TWNC : ON  
SB : OFF XB : LOW  
PYR : .05 / .10 / .25  
GYROS : OFF

FDS MODE  
XB DATA RATE (MI)

CR-5T

160(32)

VOYAGER COVERAGE

----- ON CALL -----

NOTES

UTC: 8 9 10 11 12 13 14 15 16 17 18 19 20 21 22 23 0 1 2 3 4 5 6 7 8

ISSUE DATE: 02/04/02 - 10:59

PST: 0 1 2 3 4 5 6 7 8 9 10 11 12 13 14 15 16 17 18 19 20 21 22 23 0

THURSDAY  
FEBRUARY 14, 2002  
045-046

UTC: 8 9 10 11 12 13 14 15 16 17 18 19 20 21 22 23 0 1 2 3 4 5 6 7 8

RTLTL : 23h 18m 0s

1200 RTLTL=23h 17m 58s

0000 RTLTL=23h 17m 56s

VOYAGER 1

↓ 1140 SLEW->HELIO-17A

↓ 2340 SLEW->HELIO-16A

FDSL : 11AF

CCSL : A041  
TWNC : ON  
SB : OFF XB : LOW  
PYR : .05 / .10 / .25  
GYROS : OFF

FDS MODE  
XB DATA RATE (MI)

CR-5T

160(32)

31

-----65 [D] ----- | 1120

0415 |-----63 [D] -----

1100 |-----25 [D] ----- | 1845

DSN COVERAGE  
HPTXR

32

1550 |-----45 [D] ----- | 2045

HPTXR

RTLTL : 18h 34m 56s

1200 RTLTL=18h 34m 56s

0000 RTLTL=18h 34m 56s

VOYAGER 2

FDSL : 11AF

CCSL : B115  
TWNC : ON  
SB : OFF XB : LOW  
PYR : .05 / .10 / .25  
GYROS : OFF

FDS MODE  
XB DATA RATE (MI)

CR-5T

160(32)

VOYAGER COVERAGE

----- ON CALL -----

NOTES

UTC: 8 9 10 11 12 13 14 15 16 17 18 19 20 21 22 23 0 1 2 3 4 5 6 7 8

ISSUE DATE: 02/04/02 - 10:59

PST: 0 1 2 3 4 5 6 7 8 9 10 11 12 13 14 15 16 17 18 19 20 21 22 23 0

FRIDAY  
FEBRUARY 15, 2002  
046-047

UTC: 8 9 10 11 12 13 14 15 16 17 18 19 20 21 22 23 0 1 2 3 4 5 6 7 8

RTLTL : 23h 17m 56s

1200 RTLTL=23h 17m 54s

0000 RTLTL=23h 17m 52s

VOYAGER 1

↓ 1140 SLEW->HELIO-15A

↓ 2340 SLEW->HELIO-14A

FDSL : 11AF

0309 | 0310 PWS/RH

CCSL : A041  
TWNC : ON  
SB : OFF XB : LOW  
PYR : .05 / .10 / .25  
GYROS : OFF

0007 | | 0020 TAPPOS

0516 | 0517 TAPPOS

0309  
GS-4B 0310

FDS MODE  
XB DATA RATE (MI)

CR-5T

CR-5T

160(32)

160(32)

31

0855 63 [D]

0245 |

65 [D]

1025 |

15 [D]

1945

DSN COVERAGE  
HPTXR

32

1535 |

43 [D]

0155

HPTXR

RTLTL : 18h 34m 56s

1200 RTLTL=18h 34m 54s

0000 RTLTL=18h 34m 54s

VOYAGER 2

FDSL : 11AF

CCSL : B115  
TWNC : ON  
SB : OFF XB : LOW  
PYR : .05 / .10 / .25  
GYROS : OFF

FDS MODE  
XB DATA RATE (MI)

CR-5T

160(32)

VOYAGER COVERAGE

ON CALL

NOTES

[1] S/C 31=GS-4B @ 0309 XB=2.8K(41) NOT RECOVERABLE

UTC: 8 9 10 11 12 13 14 15 16 17 18 19 20 21 22 23 0 1 2 3 4 5 6 7 8



ISSUE DATE: 02/04/02 - 10:59

PST: 0 1 2 3 4 5 6 7 8 9 10 11 12 13 14 15 16 17 18 19 20 21 22 23 0

SATURDAY  
FEBRUARY 16, 2002  
047-048

UTC: 8 9 10 11 12 13 14 15 16 17 18 19 20 21 22 23 0 1 2 3 4 5 6 7 8

RTLT : 23h 17m 52s

1200 RTLT=23h 17m 50s

0000 RTLT=23h 17m 48s

VOYAGER 1

↓ 1140 SLEW->HELIO-13A

↓ 2340 SLEW->HELIO-12A

FDSL : 11AF

CCSL : A041  
TWNC : ON  
SB : OFF XB : LOW  
PYR : .05 / .10 / .25  
GYROS : OFF

FDS MODE  
XB DATA RATE (MI)

CR-5T

160(32)

31

----- 65 [D] ----- | 1240

0325 |----- 65 [D] -----

DSN COVERAGE  
HPTXR

32

1815 - 0750 |-----

43 [D] -----

HPTXR

RTLT : 18h 34m 54s

1200 RTLT=18h 34m 54s

0000 RTLT=18h 34m 54s

VOYAGER 2

FDSL : 11AF

CCSL : B115  
TWNC : ON  
SB : OFF XB : LOW  
PYR : .05 / .10 / .25  
GYROS : OFF

FDS MODE  
XB DATA RATE (MI)

CR-5T

160(32)

VOYAGER COVERAGE

----- ON CALL -----

NOTES

UTC: 8 9 10 11 12 13 14 15 16 17 18 19 20 21 22 23 0 1 2 3 4 5 6 7 8

ISSUE DATE: 02/04/02 - 10:59

PST: 0 1 2 3 4 5 6 7 8 9 10 11 12 13 14 15 16 17 18 19 20 21 22 23 0

SUNDAY  
FEBRUARY 17, 2002  
048-049

UTC: 8 9 10 11 12 13 14 15 16 17 18 19 20 21 22 23 0 1 2 3 4 5 6 7 8

RTLT : 23h 17m 48s

1200 RTLT=23h 17m 46s

0000 RTLT=23h 17m 44s

VOYAGER 1

↓ 1139 SLEW->HELIO-11A

↓ 0339 SLEW->MIDPNT-A

FDSL : 11AF

CCSL : A041  
TWNC : ON  
SB : OFF XB : LOW  
PYR : .05 / .10 / .25  
GYROS : OFF

FDS MODE  
XB DATA RATE (MI)

CR-5T

160(32)

31 --- 65 [D] --- | 1050

0255 | --- 65 [D] ---

1030 | --- 25 [D] --- | 1945

DSN COVERAGE

HPTXR

32

1555 | --- 45 [D] --- | 0325

HPTXR

RTLT : 18h 34m 54s

1200 RTLT=18h 34m 52s

0000 RTLT=18h 34m 52s

VOYAGER 2

FDSL : 11AF

CCSL : B115  
TWNC : ON  
SB : OFF XB : LOW  
PYR : .05 / .10 / .25  
GYROS : OFF

FDS MODE  
XB DATA RATE (MI)

CR-5T

160(32)

VOYAGER COVERAGE

--- ON CALL ---

NOTES

UTC: 8 9 10 11 12 13 14 15 16 17 18 19 20 21 22 23 0 1 2 3 4 5 6 7 8