

ISSUE DATE: 10/23/96 - 09:40

PDT: 0 1 2 3 4 5 6 7 8 9 10 11 12 13 14 15 16 17 18 19 20 21 22 23 0

THURSDAY
OCTOBER 24, 1996
298-299

VCB/MD MTG/A106

UTC: 7 8 9 10 11 12 13 14 15 16 17 18 19 20 21 22 23 0 1 2 3 4 5 6 7

RTLTL : 18h 6m 6s

1200 RTLTL=18h 6m 14s

0000 RTLTL=18h 6m 24s

VOYAGER 1

FDSL : 11AF

CCSL : A024
TWNC : ON
SB : OFF XB : HI
PYR : .05/ .10 / .25
GYROS : OFF

S/C 31 STATUS

FDS CLOCK DRIFT:
ADD TO S/C EVENT
ERT: -8.423 sec

ROLLREF = RIGIL
KENTAURUS

▼ 1600 DUMMY (10:06)

1718 | - TAPPOS - - | 1933

↓ 2249 SLEW-> SUN +1 EL

↓ 2333 SLEW->2 DELTA EL ACROSS SUN

2333 | | 2350 SUNMON

↓ 2342 SLEW->+2 DELTA EL ACROSS SUN

↓ 2352 SLEW->SAFE

FDS MODE
XB DATA RATE (MI)

CR-5T

160 (32)

2235 2354

UV-5A

600(36)

CR-5T

160(32)

31

1245 | - - - - - 61 - - - - - | 1645

1630 | - - - - - 65 [D] - - - - - | 2030

2230 | - - - - - 15 [D] - - - - - | 0345

DSN COVERAGE
HPTXR

32

- - - - - 45 [D] - - - - - | 1100

0030 | - - - - - 45 [D] - - - - -

HPTXR

RTLTL : 13h 57m 46s

1200 RTLTL=13h 57m 58s

0000 RTLTL=13h 58m 10s

VOYAGER 2

FDSL : 11AF

CCSL : B026
TWNC : ON
SB : OFF XB : LOW
PYR : .05/ .10 / .25
GYROS : OFF

S/C 32 STATUS

FDS CLOCK DRIFT:
ADD TO S/C EVENT
ERT: 2:04.954 min

ROLLREF = VEGA

FDS MODE
XB DATA RATE (MI)

CR-5T

160 (32)

VOYAGER COVERAGE

| - - - - - VGR - - - - - |

NOTES

UTC: 7 8 9 10 11 12 13 14 15 16 17 18 19 20 21 22 23 0 1 2 3 4 5 6 7

ISSUE DATE: 10/23/96 - 09:40

PDT: 0 1 2 3 4 5 6 7 8 9 10 11 12 13 14 15 16 17 18 19 20 21 22 23 0

FRIDAY
OCTOBER 25, 1996
299-300

SCRAP/A106

UTC: 7 8 9 10 11 12 13 14 15 16 17 18 19 20 21 22 23 0 1 2 3 4 5 6 7

RTLT : 18h 6m 24s

1200 RTLT=18h 6m 32s

0000 RTLT=18h 6m 42s

VOYAGER 1

U/L 1430 | - | - - - - - TLC (SHORT-FORM) - - - - -

FDSL : 11AF

- ↓ 1804 GYRO INIT
- ↓ 1804 GYROS BC ON
- ↓ 1814 GYRO FAULT TEST

CCSL : A024
TWNC : ON
SB : OFF XB : HI
PYR : .05/ .10 / .25
GYROS : OFF

FDS MODE
XB DATA RATE (MI)

CR-5T
160(32)

31

0905 | - - - - 65 [D] - - - - | 1145

1215 | - - - - - 61 - - - - - | 1655

1745 | - - - - - 15 [D] - - - - - | 0355

HPTXR
DSN COVERAGE

32

- - - - - 45 [D] - - - - - | 1440

2335 | - - - - - 45 [D] - - - - -

HPTXR

RTLT : 13h 58m 10s

1200 RTLT=13h 58m 22s

0000 RTLT=13h 58m 34s

VOYAGER 2

FDSL : 11AF

CCSL : B026
TWNC : ON
SB : OFF XB : LOW
PYR : .05/ .10/ .25
GYROS : OFF

FDS MODE
XB DATA RATE (MI)

CR-5T
160 (32)

VOYAGER COVERAGE

| - - - - - VGR - - - - - |

NOTES

UTC: 7 8 9 10 11 12 13 14 15 16 17 18 19 20 21 22 23 0 1 2 3 4 5 6 7

ISSUE DATE: 10/23/96 - 09:40

PDT: 0 1 2 3 4 5 6 7 8 9 10 11 12 13 14 15 16 17 18 19 20 21 22 23 0

SATURDAY
OCTOBER 26, 1996
300-301

UTC: 7 8 9 10 11 12 13 14 15 16 17 18 19 20 21 22 23 0 1 2 3 4 5 6 7

RTLT : 18h 6m 42s

1200 RTLT=18h 6m 50s

0000 RTLT=18h 7m 0s

VOYAGER 1

-----| TLC (SHORT-FORM)
-----| D/L -| 1005

FDSL : 11AF

CCSL : A024
TWNC : ON
SB : OFF XB : HI
PYR : .05/ .10 / .25
GYROS : ON

FDS MODE
XB DATA RATE (MI)

CR-5T
160(32)

31

0900 |-----| 65 [D] -----| 2020

2235 |-----| 15 [D] -----| 0355

HPTXR
DSN COVERAGE

32

-----| 45 [D] -----| 1435

2330 |-----| 45 [D] -----|

HPTXR

RTLT : 13h 58m 34s

1200 RTLT=13h 58m 44s

0000 RTLT=13h 58m 56s

VOYAGER 2

FDSL : 11AF

CCSL : B026
TWNC : ON
SB : OFF XB : LOW
PYR : .05/ .10/ .25
GYROS : OFF

FDS MODE
XB DATA RATE (MI)

CR-5T
160 (32)

VOYAGER COVERAGE

-----| ON CALL -----|

NOTES

UTC: 7 8 9 10 11 12 13 14 15 16 17 18 19 20 21 22 23 0 1 2 3 4 5 6 7

ISSUE DATE: 10/23/96 - 09:40

PDT: 0 1 1 2 3 4 5 6 7 8 9 10 11 12 13 14 15 16 17 18 19 20 21 22 23 0

SUNDAY
OCTOBER 27, 1996
301-302

UTC: 7 8 9 10 11 12 13 14 15 16 17 18 19 20 21 22 23 0 1 2 3 4 5 6 7 8

RTLT : 18h 7m 0s

1200 RTLT=18h 7m 8s

0000 RTLT=18h 7m 18s

VOYAGER 1

FDSL : 11AF

CCSL : A024
TWNC : ON
SB : OFF XB : HI
PYR : .05/ .10 / .25
GYROS : ON

FDS MODE
XB DATA RATE (MI)

CR-5T
160(32)

31

0900 |----- 65 [D] -----| 2000

1945 |----- 15 [D] -----| 0350

HPTXR

DSN COVERAGE

32

----- 45 [D] -----| 1345

0430 |----- 45 [D] -----

HPTXR

RTLT : 13h 58m 56s

1200 RTLT=13h 59m 8s

0000 RTLT=13h 59m 20s

VOYAGER 2

FDSL : 11AF

CCSL : B026
TWNC : ON
SB : OFF XB : LOW
PYR : .05/ .10/ .25
GYROS : OFF

FDS MODE
XB DATA RATE (MI)

CR-5T
160 (32)

VOYAGER COVERAGE

----- ON CALL -----

NOTES

UTC: 7 8 9 10 11 12 13 14 15 16 17 18 19 20 21 22 23 0 1 2 3 4 5 6 7 8

ISSUE DATE: 10/23/96 - 09:40

PST: 0 1 2 3 4 5 6 7 8 9 10 11 12 13 14 15 16 17 18 19 20 21 22 23 0

MONDAY
OCTOBER 28, 1996
302-303

UTC: 8 9 10 11 12 13 14 15 16 17 18 19 20 21 22 23 0 1 2 3 4 5 6 7 8

RTLT : 18h 7m 18s

1200 RTLT=18h 7m 26s

0000 RTLT=18h 7m 36s

VOYAGER 1

FDSL : 11AF

CCSL : A024
TWNC : ON
SB : OFF XB : HI
PYR : .05/ .10 / .25
GYROS : ON

FDS MODE
XB DATA RATE (MI)

CR-5T
160(32)

31

0855 |----- 65 [D] -----| 1235

2330 |----- 15 [D] -----| 0345

HPTXR

DSN COVERAGE

32

----- 45 [D] -----| 1430

2310 |----- 45 [D] -----

HPTXR

RTLT : 13h 59m 20s

1200 RTLT=13h 59m 32s

0000 RTLT=13h 59m 44s

VOYAGER 2

FDSL : 11AF

CCSL : B026
TWNC : ON
SB : OFF XB : LOW
PYR : .05/ .10/ .25
GYROS : OFF

FDS MODE
XB DATA RATE (MI)

CR-5T
160 (32)

VOYAGER COVERAGE

|----- VGR -----|

NOTES

UTC: 8 9 10 11 12 13 14 15 16 17 18 19 20 21 22 23 0 1 2 3 4 5 6 7 8

ISSUE DATE: 10/23/96 - 09:40

PST: 0 1 2 3 4 5 6 7 8 9 10 11 12 13 14 15 16 17 18 19 20 21 22 23 0

TUESDAY
OCTOBER 29, 1996
303-304

UTC: 8 9 10 11 12 13 14 15 16 17 18 19 20 21 22 23 0 1 2 3 4 5 6 7 8

RTLTL : 18h 7m 36s

VOYAGER 1

FDSL : 11AF

CCSL : A024
TWNC : ON
SB : OFF XB : HI
PYR : .05/ .10 / .25
GYROS : ON

- ↓ 1921 ALL DB=.05
- ↓ 1937 AAI
- 1937 | - - | 2014 ASCAL
- ↓ 2012 RAI
- ↓ 2014 CRU
- ↓ 2023 ROLL=.25
- ↓ 2023 YAW=.10
- ↓ 2025 GYRO FAULT TEST

0258 | 0259 PWS/RH

0258
GS-4B 0259

FDS MODE
XB DATA RATE (MI)

CR-5T
160(32)

1905 2017
EL-40
40(30)

CR-5T
160(32)

CR-5T
160(32)

31
DSN COVERAGE
HPTXR

1230 | - - - - - 65 [D] - - - - - | 1640
1625 | - - - - - 15 [D] - - - - - | 0345

32
HPTXR

45 [D] - - - - - | 1350
1335 | 43 [o] | 1435
2305 | - - - - - 45 [D] - - - - -

RTLTL : 13h 59m 44s

VOYAGER 2

FDSL : 11AF

CCSL : B026
TWNC : ON
SB : OFF XB : LOW
PYR : .05/ .10/ .25
GYROS : OFF

COMMAND MORATORIUM

- ↓ 2332 GYRO INIT
- ↓ 2332 GYROS BC ON
- ↓ 2342 GYRO FAULT TEST
- 0219 | 0220 PWS/RH

0219
GS-4B 0220

FDS MODE
XB DATA RATE (MI)

CR-5T
160 (32)

CR-5T
160(32)

VOYAGER COVERAGE

| - - - - - VGR - - - - - |

NOTES

- [1] S/C 31 - D/L AGC/SNR VARIATIONS EXPECTED DURING ASCAL (1937-2014)
- [2] S/C 32=GS-4B @ 0219 XB=2.8K(41) NOT RECOVERABLE
- [3] S/C 31=GS-4B @ 0258 XB=2.8K(41) NOT RECOVERABLE

UTC: 8 9 10 11 12 13 14 15 16 17 18 19 20 21 22 23 0 1 2 3 4 5 6 7 8

ISSUE DATE: 10/23/96 - 09:40

PST: 0 1 2 3 4 5 6 7 8 9 10 11 12 13 14 15 16 17 18 19 20 21 22 23 0

WEDNESDAY
OCTOBER 30, 1996
304-305

UTC: 8 9 10 11 12 13 14 15 16 17 18 19 20 21 22 23 0 1 2 3 4 5 6 7 8

RTLT : 18h 7m 52s

1200 RTLT=18h 8m 2s

0000 RTLT=18h 8m 10s

VOYAGER 1

▼ 1600 DUMMY (10:08)

FDSL : 11AF

CCSL : A024
TWNC : ON
SB : OFF XB : HI
PYR : .05 / .10 / .25
GYROS : ON

FDS MODE
XB DATA RATE (MI)

CR-5T
160(32)

31

1155 |----- 61 -----| 1635

2230 |----- 15 [D] -----| 0340

DSN COVERAGE
HPTXR

32

45 [D] |-----| 1420

2300 |----- 45 [D] -----

HPTXR

RTLT : 14h 0m 6s

1200 RTLT=14h 0m 18s

0000 RTLT=14h 0m 30s

----- COMMAND MORATORIUM -----

VOYAGER 2

FDSL : 11AF

CCSL : B026
TWNC : ON
SB : OFF XB : LOW
PYR : .05 / .10 / .25
GYROS : ON

FDS MODE
XB DATA RATE (MI)

CR-5T
160(32)

VOYAGER COVERAGE

|----- VGR -----|

NOTES

UTC: 8 9 10 11 12 13 14 15 16 17 18 19 20 21 22 23 0 1 2 3 4 5 6 7 8

ISSUE DATE: 10/23/96 - 09:40

PST: 0 1 2 3 4 5 6 7 8 9 10 11 12 13 14 15 16 17 18 19 20 21 22 23 0

THURSDAY
OCTOBER 31, 1996
305-306

VCB/MD MTG/A106

UTC: 8 9 10 11 12 13 14 15 16 17 18 19 20 21 22 23 0 1 2 3 4 5 6 7 8

RTLTL : 18h 8m 10s

1200 RTLTL=18h 8m 18s

0000 RTLTL=18h 8m 26s

VOYAGER 1

- ↓ 2250 SLEW-> SUN +1 EL
- ↓ 2334 SLEW->-2 DELTA EL ACROSS SUN
- 2334 | 2351 SUNMON
- ↓ 2343 SLEW->+2 DELTA EL ACROSS SUN
- ↓ 2353 SLEW->SAFE

FDSL : 11AF

CCSL : A024
TWNC : ON
SB : OFF XB : HI
PYR : .05 / .10 / .25
GYROS : ON

2236 2355

FDS MODE
XB DATA RATE (MI)

CR-5T

UV-5A

CR-5T

160(32)

600(36)

160(32)

31

-----| 65 [D] -----| 0840 - 2000
1945 |-----| 15 [D] -----| 0215

HPTXR

DSN COVERAGE

32

--| 0825 45 [D] ----- 2300 |-----| 45 [D] -----

HPTXR

RTLTL : 14h 0m 30s

1200 RTLTL=14h 0m 40s

0000 RTLTL=14h 0m 52s

VOYAGER 2

FDSL : 11AF

CCSL : B026
TWNC : ON
SB : OFF XB : LOW
PYR : .05 / .10 / .25
GYROS : ON

FDS MODE
XB DATA RATE (MI)

CR-5T

160(32)

VOYAGER COVERAGE

|-----| VGR -----|

NOTES

UTC: 8 9 10 11 12 13 14 15 16 17 18 19 20 21 22 23 0 1 2 3 4 5 6 7 8

ISSUE DATE: 10/23/96 - 09:40

PST: 0 1 2 3 4 5 6 7 8 9 10 11 12 13 14 15 16 17 18 19 20 21 22 23 0

FRIDAY
 NOVEMBER 1, 1996
 306-307

□ SCRAP/A106

UTC: 8 9 10 11 12 13 14 15 16 17 18 19 20 21 22 23 0 1 2 3 4 5 6 7 8

RTLT : 18h 8m 26s
 VOYAGER 1
 FDSL : 11AF
 CCSL : A024
 TWNC : ON
 SB : OFF XB : HI
 PYR : .05 / .10 / .25
 GYROS : ON

U/L 1430 | - | - - - - - TLC (SHORT-FORM) - - - - -

1200 RTLT=18h 8m 34s | 0000 RTLT=18h 8m 44s

↓ 1915 AAI
 1918 | - - - - - MAGROL - - - - - | 0114
 ↓ 0106 RAI
 ↓ 0114 CRU
 ↓ 0114 GYROS OFF

FDS MODE CR-5T
 XB DATA RATE (MI) 160(32)

DSN COVERAGE HPTXR

31 1000 | 63 [D] - | 1125
 1150 | - - - - - 61 - - - - - | 1630
 1615 | - - - - - 15 [D] - - - - - | 0335

32 - | 0825 45 [D] - - - - - 2300 | - - - - - 45 [D] - - - - -

HPTXR

RTLT : 14h 0m 52s
 VOYAGER 2
 FDSL : 11AF
 CCSL : B026
 TWNC : ON
 SB : OFF XB : LOW
 PYR : .05 / .10 / .25
 GYROS : ON

1200 RTLT=14h 1m 4s | 0000 RTLT=14h 1m 16s

1001 | - - - - - COMMAND MORATORIUM - - - - -

↓ 2333 BAY 1 HTR OFF
 ↓ 2337 X/B HI POWER

FDS MODE CR-5T
 XB DATA RATE (MI) 160(32)

VOYAGER COVERAGE | - - - - - VGR - - - - - |

NOTES [1] S/C 31 - D/L AGC VARIATIONS EXPECTED DURING MAGROL (1918-0114)

UTC: 8 9 10 11 12 13 14 15 16 17 18 19 20 21 22 23 0 1 2 3 4 5 6 7 8

ISSUE DATE: 10/23/96 - 09:40

PST: 0 1 2 3 4 5 6 7 8 9 10 11 12 13 14 15 16 17 18 19 20 21 22 23 0

SATURDAY
NOVEMBER 2, 1996
307-308

UTC: 8 9 10 11 12 13 14 15 16 17 18 19 20 21 22 23 0 1 2 3 4 5 6 7 8

RTLTL : 18h 8m 44s

1200 RTLTL=18h 8m 52s

0000 RTLTL=18h 9m 0s

VOYAGER 1

-----| TLC (SHORT-FORM)
| D/L -| 1007

FDSL : 11AF

CCSL : A024
TWNC : ON
SB : OFF XB : HI
PYR : .05 / .10 / .25
GYROS : OFF

FDS MODE
XB DATA RATE (MI)

CR-5T
160(32)

31 |-----63 [D]-----| 0820 - 1120
1320 |-----61 [D]-----| 1620
2050 |-----24 [D]-----| 0325

HPTXR
DSN COVERAGE

32 |-----45 [D]-----| 1410
2250 |-----45 [D]-----|

HPTXR

RTLTL : 14h 1m 16s

1200 RTLTL=14h 1m 26s

0000 RTLTL=14h 1m 38s

-----COMMAND MORATORIUM-----

↓ 0518 GYRO INIT

VOYAGER 2

FDSL : 11AF

CCSL : B026
TWNC : ON
SB : OFF XB : HI
PYR : .05 / .10 / .25
GYROS : ON

FDS MODE
XB DATA RATE (MI)

CR-5T
160(32)

VOYAGER COVERAGE

-----ON CALL-----

NOTES

UTC: 8 9 10 11 12 13 14 15 16 17 18 19 20 21 22 23 0 1 2 3 4 5 6 7 8

ISSUE DATE: 10/23/96 - 09:40

PST: 0 1 2 3 4 5 6 7 8 9 10 11 12 13 14 15 16 17 18 19 20 21 22 23 0

SUNDAY
NOVEMBER 3, 1996
308-309

UTC: 8 9 10 11 12 13 14 15 16 17 18 19 20 21 22 23 0 1 2 3 4 5 6 7 8

RTLT : 18h 9m 0s

1200 RTLT=18h 9m 8s

0000 RTLT=18h 9m 16s

VOYAGER 1

FDSL : 11AF

CCSL : A024
TWNC : ON
SB : OFF XB : HI
PYR : .05 / .10 / .25
GYROS : OFF

FDS MODE
XB DATA RATE (MI)

CR-5T

160(32)

31

-----65 [D] -----|0830 - 1225

1210 |-----61 [D] -----|1615

1930 |-----15 [D] -----|0320

HPTXR

DSN COVERAGE

32

--|0830 45 [D]

0330 |-----45 [D] -----

HPTXR

RTLT : 14h 1m 38s

1200 RTLT=14h 1m 50s

0000 RTLT=14h 2m 0s

-----|0935 COMMAND MORATORIUM

VOYAGER 2

FDSL : 11AF

CCSL : B026
TWNC : ON
SB : OFF XB : HI
PYR : .05 / .10 / .25
GYROS : ON

FDS MODE
XB DATA RATE (MI)

CR-5T

160(32)

VOYAGER COVERAGE

-----ON CALL-----

NOTES

UTC: 8 9 10 11 12 13 14 15 16 17 18 19 20 21 22 23 0 1 2 3 4 5 6 7 8

ISSUE DATE: 10/23/96 - 09:40

PST: 0 1 2 3 4 5 6 7 8 9 10 11 12 13 14 15 16 17 18 19 20 21 22 23 0

MONDAY
NOVEMBER 4, 1996
309-310

UTC: 8 9 10 11 12 13 14 15 16 17 18 19 20 21 22 23 0 1 2 3 4 5 6 7 8

RTLT : 18h 9m 16s

1200 RTLT=18h 9m 24s

0000 RTLT=18h 9m 32s

VOYAGER 1

FDSL : 11AF

CCSL : A024
TWNC : ON
SB : OFF XB : HI
PYR : .05 / .10 / .25
GYROS : OFF

FDS MODE
XB DATA RATE (MI)

CR-5T
160(32)

31

2255 |----- 15 [D] -----| 0330

DSN COVERAGE
HPTXR

32

45 [D] -----| 1400

0150 |----- 45 [D] -----

HPTXR

RTLT : 14h 2m 0s

1200 RTLT=14h 2m 12s

0000 RTLT=14h 2m 22s

VOYAGER 2

FDSL : 11AF

CCSL : B026
TWNC : ON
SB : OFF XB : HI
PYR : .05 / .10 / .25
GYROS : ON

FDS MODE
XB DATA RATE (MI)

CR-5T
160(32)

VOYAGER COVERAGE

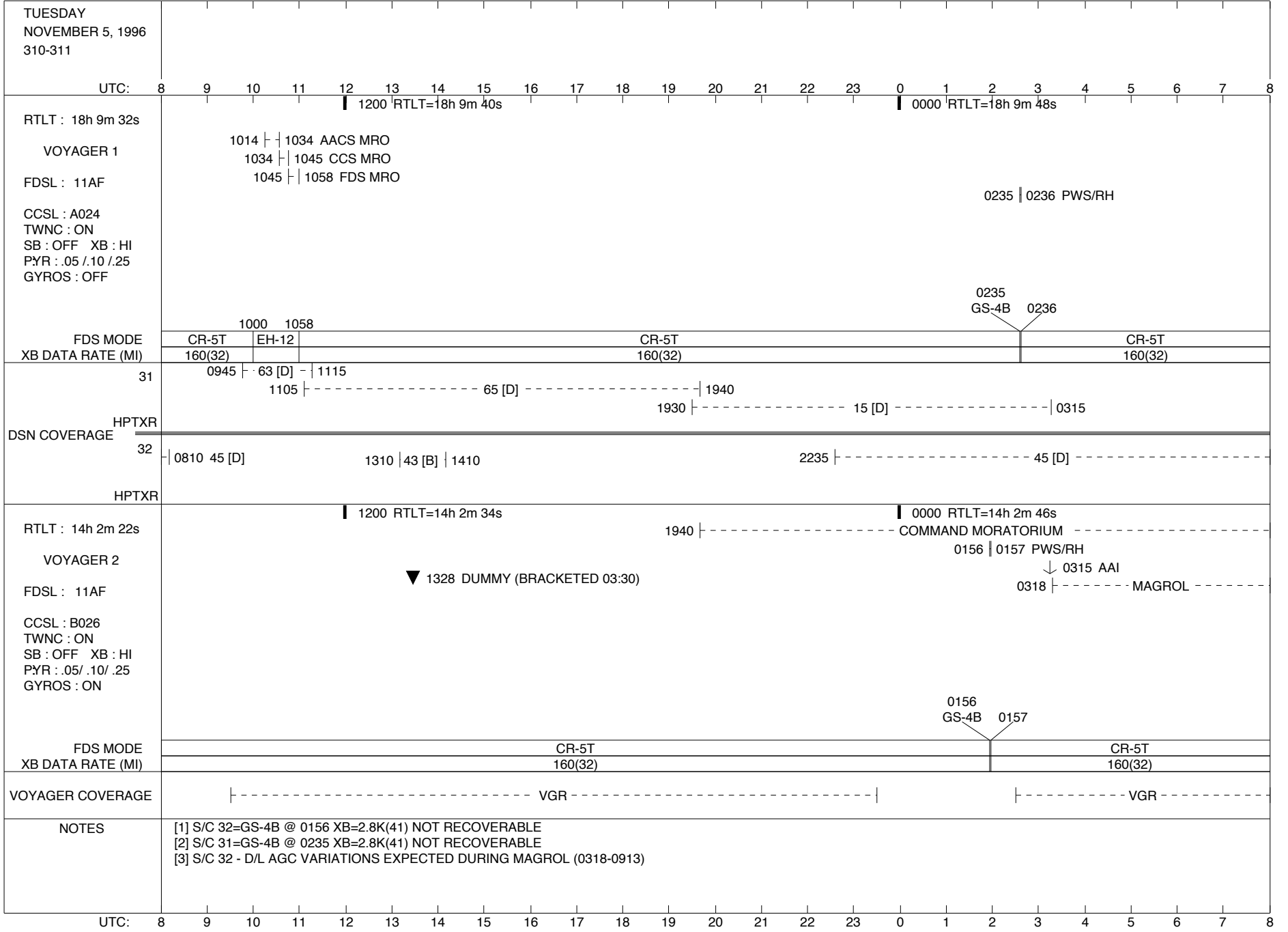
|----- VGR -----|

NOTES

UTC: 8 9 10 11 12 13 14 15 16 17 18 19 20 21 22 23 0 1 2 3 4 5 6 7 8

ISSUE DATE: 10/23/96 - 09:40

PST: 0 1 2 3 4 5 6 7 8 9 10 11 12 13 14 15 16 17 18 19 20 21 22 23 0



ISSUE DATE: 10/23/96 - 09:40

PST: 0 1 2 3 4 5 6 7 8 9 10 11 12 13 14 15 16 17 18 19 20 21 22 23 0

WEDNESDAY
NOVEMBER 6, 1996
311-312

UTC: 8 9 10 11 12 13 14 15 16 17 18 19 20 21 22 23 0 1 2 3 4 5 6 7 8

RTLT : 18h 9m 48s

1200 RTLT=18h 9m 56s

0000 RTLT=18h 10m 4s

↓ 0148 X/B LOW POWER
↓ 0152 BAY 1 HTR ON

VOYAGER 1

FDSL : 11AF

CCSL : A024
TWNC : ON
SB : OFF XB : HI
PYR : .05 / .10 / .25
GYROS : OFF

FDS MODE
XB DATA RATE (MI)

CR-5T

160(32)

31

0940 | 63 [D] | 1110

1130 |-----| 61 [D] |-----| 1610

1600 |-----| 65 [D] |-----| 1930

1930 |-----| 25 [D] |-----| 0310

HPTXR

DSN COVERAGE

32

45 [D] |-----| 1120

0330 |-----| 45 [D] |-----|

HPTXR

RTLT : 14h 2m 46s

1200 RTLT=14h 2m 56s

0000 RTLT=14h 3m 8s

----- COMMAND MORATORIUM -----

VOYAGER 2

↓ 0906 RAI

↓ 0913 CRU

FDSL : 11AF

-----| 0913 MAGROL

↓ 0913 GYROS OFF

CCSL : B026
TWNC : ON
SB : OFF XB : HI
PYR : .05 / .10 / .25
GYROS : ON

↓ 0939 X/B LOW POWER

↓ 0943 BAY 1 HTR ON

FDS MODE
XB DATA RATE (MI)

CR-5T

160(32)

VOYAGER COVERAGE

--- VGR ---|

|----- VGR -----|

NOTES

[1] S/C 32 - D/L AGC VARIATIONS EXPECTED DURING MAGROL (0318-0913)

UTC: 8 9 10 11 12 13 14 15 16 17 18 19 20 21 22 23 0 1 2 3 4 5 6 7 8

ISSUE DATE: 10/23/96 - 09:40

PST: 0 1 2 3 4 5 6 7 8 9 10 11 12 13 14 15 16 17 18 19 20 21 22 23 0

THURSDAY
NOVEMBER 7, 1996
312-313

VCB/MD MTG/A106

UTC: 8 9 10 11 12 13 14 15 16 17 18 19 20 21 22 23 0 1 2 3 4 5 6 7 8

RTLTL : 18h 10m 4s

1200 RTLTL=18h 10m 12s

0000 RTLTL=18h 10m 20s

VOYAGER 1

↓ 1406 SLEW->HELIO-20A

↓ 0206 SLEW->HELIO-19A

FDSL : 11AF

CCSL : A024
TWNC : ON
SB : OFF XB : LOW
PYR : .05 / .10 / .25
GYROS : OFF

FDS MODE
XB DATA RATE (MI)

CR-5T
160(32)

31

1100 |----- 65 [D] -----| 1930

1915 |----- 25 [D] -----| 0305

DSN COVERAGE
HPTXR

32

| 0820 45 [D]

0325 |----- 45 [D] -----|

HPTXR

RTLTL : 14h 3m 8s

1200 RTLTL=14h 3m 18s

0000 RTLTL=14h 3m 30s

COMMAND MORATORIUM -----| 1940

VOYAGER 2

FDSL : 11AF

CCSL : B026
TWNC : ON
SB : OFF XB : LOW
PYR : .05 / .10 / .25
GYROS : OFF

FDS MODE
XB DATA RATE (MI)

CR-5T
160(32)

VOYAGER COVERAGE

|----- VGR -----|

NOTES

UTC: 8 9 10 11 12 13 14 15 16 17 18 19 20 21 22 23 0 1 2 3 4 5 6 7 8

ISSUE DATE: 10/23/96 - 09:40

PST: 0 1 2 3 4 5 6 7 8 9 10 11 12 13 14 15 16 17 18 19 20 21 22 23 0

FRIDAY
NOVEMBER 8, 1996
313-314

☐ SCRAP/A106

UTC: 8 9 10 11 12 13 14 15 16 17 18 19 20 21 22 23 0 1 2 3 4 5 6 7 8

RTLTL : 18h 10m 20s

█ 1200 RTLTL=18h 10m 26s

█ 0000 RTLTL=18h 10m 34s

VOYAGER 1

↓ 1406 SLEW->HELIO-18A

FDSL : 11AF

U/L 1515 |-----| TLC (SHORT-FORM)

↓ 0206 SLEW->HELIO-17A

CCSL : A024
TWNC : ON
SB : OFF XB : LOW
PYR : .05 / .10 / .25
GYROS : OFF

▼ 1500 DUMMY (09:10 NO D/L)

FDS MODE
XB DATA RATE (MI)

CR-5T
160(32)

31

0915 | 63 [D] - | 1045

1125 |-----| 61

1535 |-----| 1545

25 [D] ----- | 0305

HPTXR

DSN COVERAGE

32

45 [D] ----- | 1345

0320 |-----| 45 [D]

HPTXR

RTLTL : 14h 3m 30s

█ 1200 RTLTL=14h 3m 40s

█ 0000 RTLTL=14h 3m 52s

VOYAGER 2

FDSL : 11AF

CCSL : B026
TWNC : ON
SB : OFF XB : LOW
PYR : .05 / .10 / .25
GYROS : OFF

FDS MODE
XB DATA RATE (MI)

CR-5T
160(32)

VOYAGER COVERAGE

|-----| VGR -----|

NOTES

UTC: 8 9 10 11 12 13 14 15 16 17 18 19 20 21 22 23 0 1 2 3 4 5 6 7 8

ISSUE DATE: 10/23/96 - 09:40

PST: 0 1 2 3 4 5 6 7 8 9 10 11 12 13 14 15 16 17 18 19 20 21 22 23 0

SATURDAY
NOVEMBER 9, 1996
314-315

UTC: 8 9 10 11 12 13 14 15 16 17 18 19 20 21 22 23 0 1 2 3 4 5 6 7 8

RTLTL : 18h 10m 34s

1200 RTLTL=18h 10m 42s

0000 RTLTL=18h 10m 50s

VOYAGER 1

FDSL : 11AF

TLC (SHORT-FORM)
D/L - 1054

0206 SLEW->HELIO-15A

1406 SLEW->HELIO-16A

CCSL : A024
TWNC : ON
SB : OFF XB : LOW
PYR : .05 / .10 / .25
GYROS : OFF

FDS MODE
XB DATA RATE (MI)

CR-5T
160(32)

31

0925 - 63 [D] - 1100

1115 - 65 [D] - 1915

1900 - 25 [D] - 0300

DSN COVERAGE
HPTXR

32

0810 45 [D]

2235 - 15 [D] - 0145

0315 - 45 [D]

HPTXR

RTLTL : 14h 3m 52s

1200 RTLTL=14h 4m 2s

0000 RTLTL=14h 4m 14s

VOYAGER 2

FDSL : 11AF

CCSL : B026
TWNC : ON
SB : OFF XB : LOW
PYR : .05 / .10 / .25
GYROS : OFF

FDS MODE
XB DATA RATE (MI)

CR-5T
160(32)

VOYAGER COVERAGE

ON CALL

NOTES

UTC: 8 9 10 11 12 13 14 15 16 17 18 19 20 21 22 23 0 1 2 3 4 5 6 7 8

ISSUE DATE: 10/23/96 - 09:40

PST: 0 1 2 3 4 5 6 7 8 9 10 11 12 13 14 15 16 17 18 19 20 21 22 23 0

SUNDAY
NOVEMBER 10, 1996
315-316

UTC: 8 9 10 11 12 13 14 15 16 17 18 19 20 21 22 23 0 1 2 3 4 5 6 7 8

RTLT : 18h 10m 50s

1200 RTLT=18h 10m 56s

0000 RTLT=18h 11m 4s

VOYAGER 1

↓ 1406 SLEW->HELIO-14A

↓ 0206 SLEW->HELIO-13A

FDSL : 11AF

CCSL : A024
TWNC : ON
SB : OFF XB : LOW
PYR : .05 / .10 / .25
GYROS : OFF

FDS MODE
XB DATA RATE (MI)

CR-5T
160(32)

31

1050 |----- 65 [D] -----| 1915

HPTXR
DSN COVERAGE

32

|0805 45 [D]

2230 |----- 15 [D] -----| 0145

HPTXR

RTLT : 14h 4m 14s

1200 RTLT=14h 4m 24s

0000 RTLT=14h 4m 34s

VOYAGER 2

FDSL : 11AF

CCSL : B026
TWNC : ON
SB : OFF XB : LOW
PYR : .05 / .10 / .25
GYROS : OFF

FDS MODE
XB DATA RATE (MI)

CR-5T
160(32)

VOYAGER COVERAGE

----- ON CALL -----

NOTES

UTC: 8 9 10 11 12 13 14 15 16 17 18 19 20 21 22 23 0 1 2 3 4 5 6 7 8