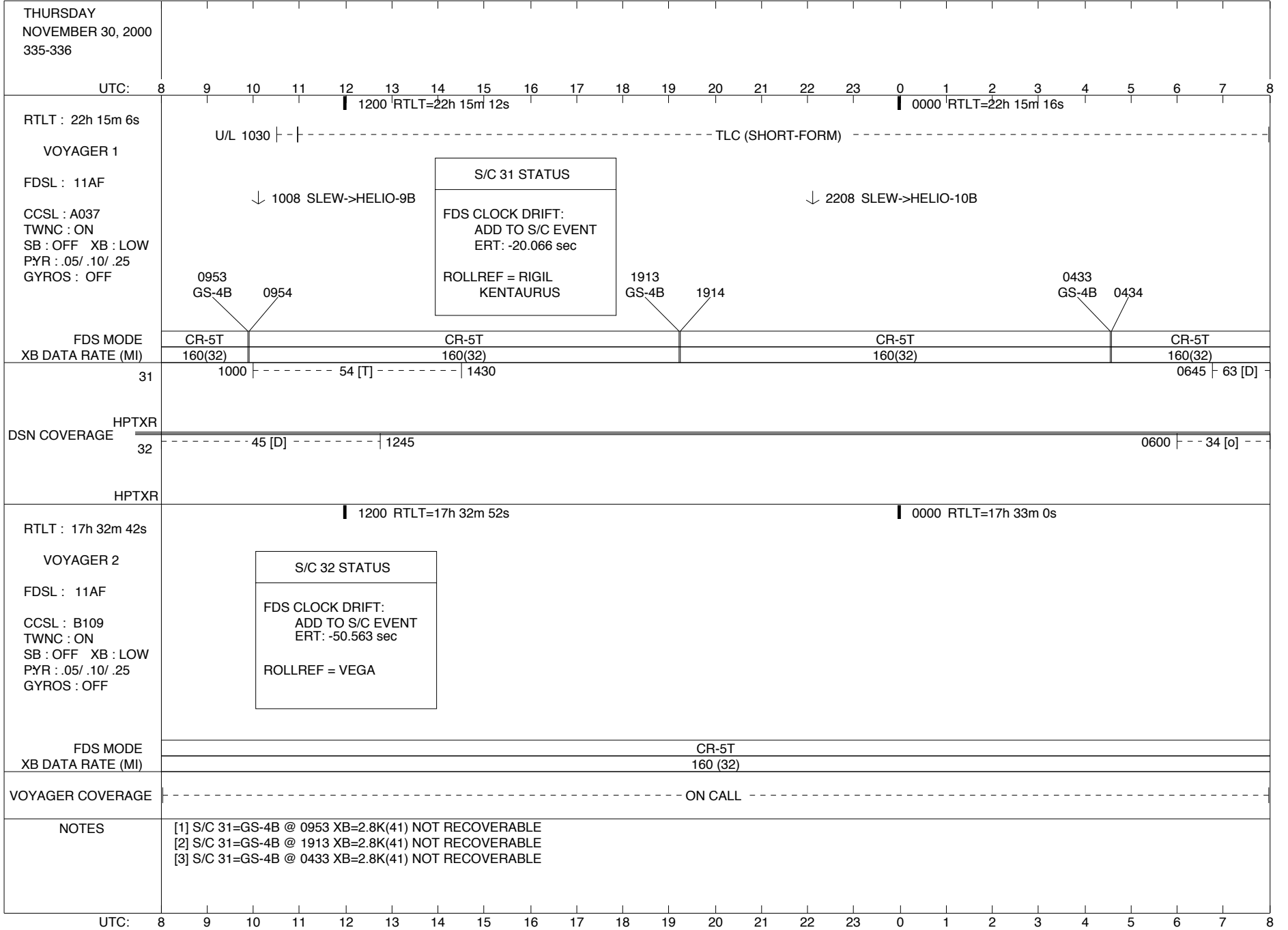


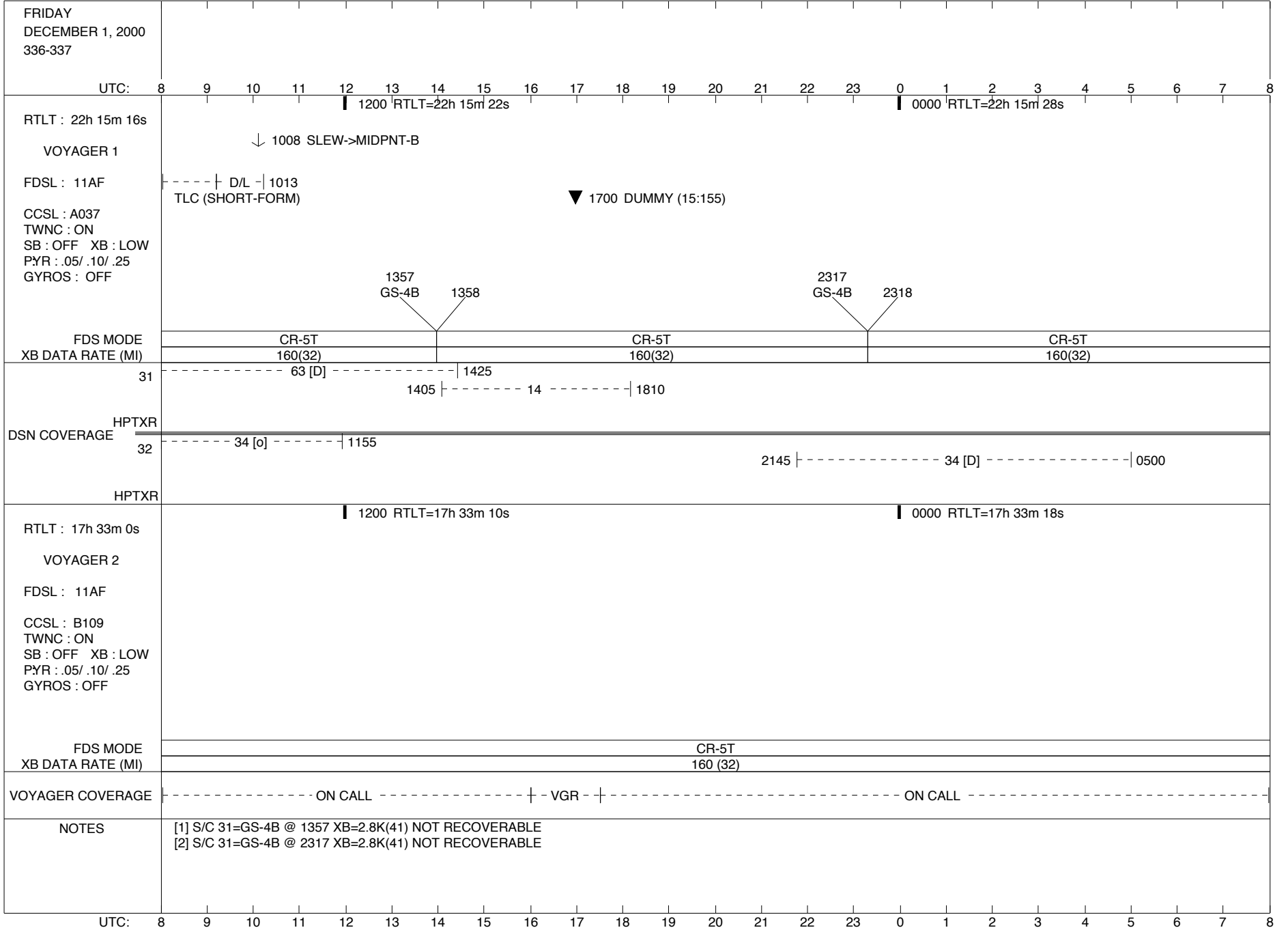
ISSUE DATE: 11/30/00 - 10:38

PST: 0 1 2 3 4 5 6 7 8 9 10 11 12 13 14 15 16 17 18 19 20 21 22 23 0



ISSUE DATE: 11/30/00 - 10:38

PST: 0 1 2 3 4 5 6 7 8 9 10 11 12 13 14 15 16 17 18 19 20 21 22 23 0



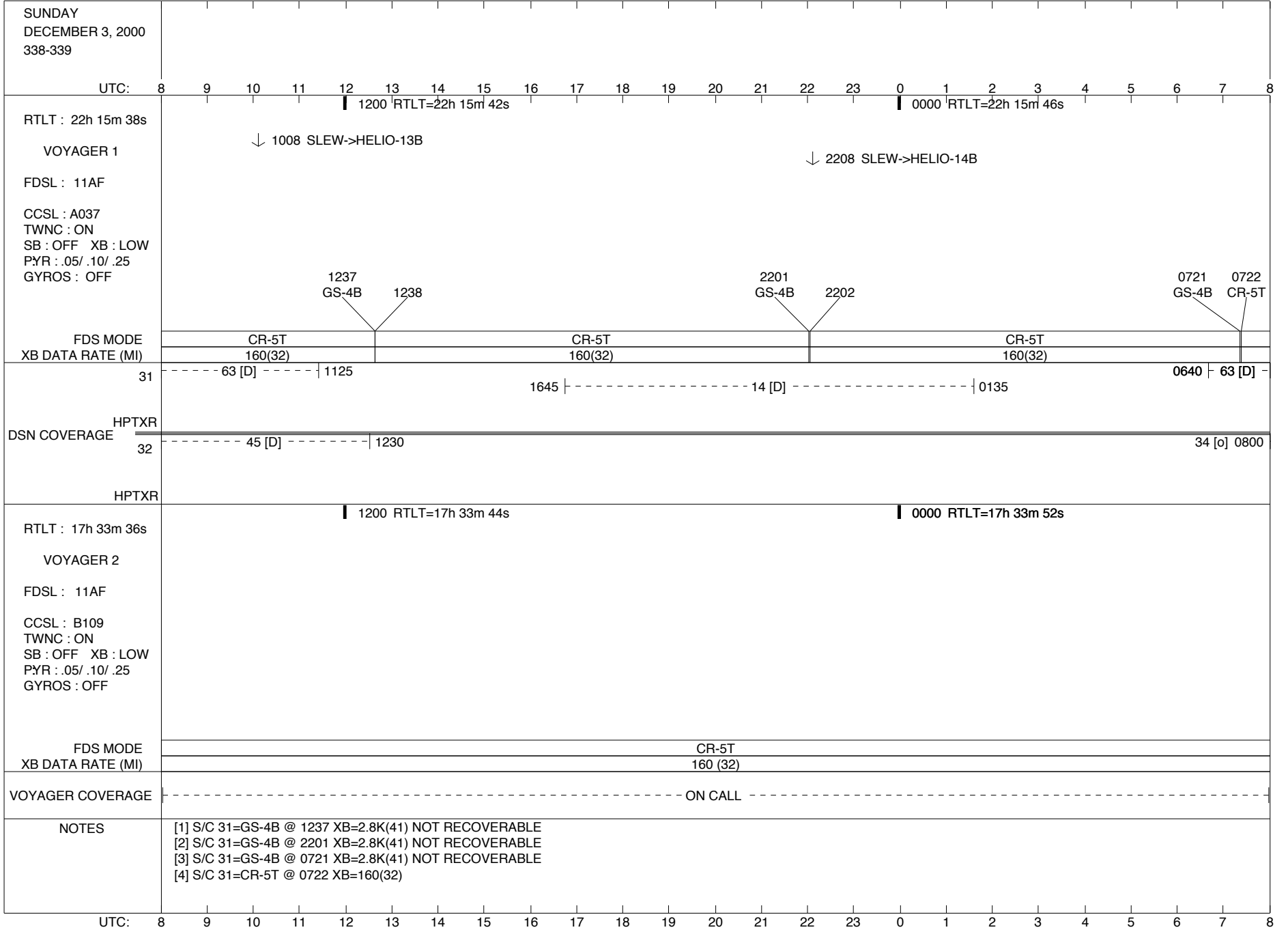
ISSUE DATE: 11/30/00 - 10:38

PST: 0 1 2 3 4 5 6 7 8 9 10 11 12 13 14 15 16 17 18 19 20 21 22 23 0

SATURDAY DECEMBER 2, 2000 337-338	
UTC: 8 9 10 11 12 13 14 15 16 17 18 19 20 21 22 23 0 1 2 3 4 5 6 7 8	
RTLT : 22h 15m 28s VOYAGER 1 FDSL : 11AF CCSL : A037 TWNC : ON SB : OFF XB : LOW PYR : .05/ .10/ .25 GYROS : OFF	1200 RTLT=22h 15m 32s 0000 RTLT=22h 15m 38s ↓ 1008 SLEW->HELIO-11B ↓ 2208 SLEW->HELIO-12B
FDS MODE XB DATA RATE (MI)	0837 GS-4B 0838 1757 GS-4B 1758 0317 GS-4B 0318 CR-5T 160(32) CR-5T 160(32) CR-5T 160(32)
DSN COVERAGE HPTXR 31 HPTXR 32	1025 ----- 63 [D] ----- 1815 2145 ----- 25 [D] ----- 0110 0620 -- 63 [D] -- 2250 -- 34 [D] --- 0110 0445 ----- 45 [D] -----
RTLT : 17h 33m 18s VOYAGER 2 FDSL : 11AF CCSL : B109 TWNC : ON SB : OFF XB : LOW PYR : .05/ .10/ .25 GYROS : OFF	1200 RTLT=17h 33m 26s 0000 RTLT=17h 33m 36s
FDS MODE XB DATA RATE (MI)	CR-5T 160 (32)
VOYAGER COVERAGE	----- ON CALL -----
NOTES	[1] S/C 31=CR-5T @ 336/2318 XB=160(32) [2] S/C 31=GS-4B @ 0837 XB=2.8K(41) NOT RECOVERABLE [3] S/C 31=GS-4B @ 1757 XB=2.8K(41) NOT RECOVERABLE [4] S/C 31=GS-4B @ 0317 XB=2.8K(41) NOT RECOVERABLE
UTC: 8 9 10 11 12 13 14 15 16 17 18 19 20 21 22 23 0 1 2 3 4 5 6 7 8	

ISSUE DATE: 11/30/00 - 10:38

PST: 0 1 2 3 4 5 6 7 8 9 10 11 12 13 14 15 16 17 18 19 20 21 22 23 0



ISSUE DATE: 11/30/00 - 10:38

PST: 0 1 2 3 4 5 6 7 8 9 10 11 12 13 14 15 16 17 18 19 20 21 22 23 0

MONDAY
DECEMBER 4, 2000
339-340

UTC: 8 9 10 11 12 13 14 15 16 17 18 19 20 21 22 23 0 1 2 3 4 5 6 7 8

RTLTL : 22h 15m 46s

1200 RTLTL=22h 15m 52s

0000 RTLTL=22h 15m 56s

VOYAGER 1

↓ 1009 SLEW->HELIO-15B

↓ 2209 SLEW->HELIO-16B

FDSL : 11AF

CCSL : A037
TWNC : ON
SB : OFF XB : LOW
PYR : .05/ .10/ .25
GYROS : OFF

1641 GS-4B 1642

0201 GS-4B 0202

FDS MODE
XB DATA RATE (MI)

CR-5T
160(32)

CR-5T
160(32)

CR-5T
160(32)

31

63 [D] ----- | 1125

1200 |----- 54 [D] ----- | 1700

2330 | - 15 [D] - - | 0120

DSN COVERAGE
HPTXR

32

34 [o] ----- | 0800 - 1215

2040 |----- 45 [D] ----- | 0255

0545 | - - - 43 - - - |

HPTXR

RTLTL : 17h 33m 52s

1200 RTLTL=17h 34m 2s

0000 RTLTL=17h 34m 10s

VOYAGER 2

FDSL : 11AF

CCSL : B109
TWNC : ON
SB : OFF XB : LOW
PYR : .05/ .10/ .25
GYROS : OFF

FDS MODE
XB DATA RATE (MI)

CR-5T
160 (32)

VOYAGER COVERAGE

----- ON CALL -----

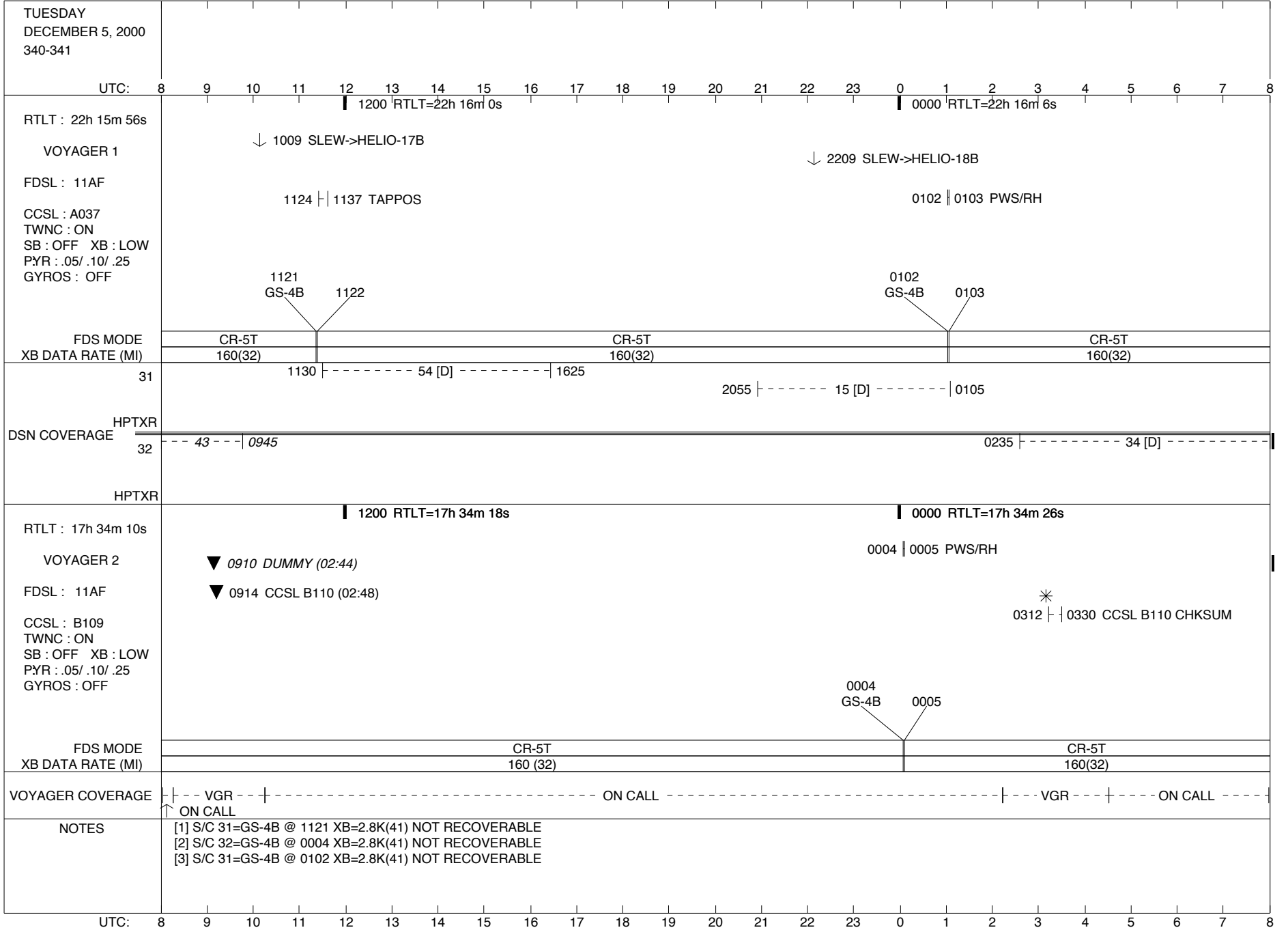
NOTES

[1] S/C 31=GS-4B @ 1641 XB=2.8K(41) NOT RECOVERABLE
[2] S/C 31=GS-4B @ 0201 XB=2.8K(41) NOT RECOVERABLE

UTC: 8 9 10 11 12 13 14 15 16 17 18 19 20 21 22 23 0 1 2 3 4 5 6 7 8

ISSUE DATE: 11/30/00 - 10:38

PST: 0 1 2 3 4 5 6 7 8 9 10 11 12 13 14 15 16 17 18 19 20 21 22 23 0



ISSUE DATE: 11/30/00 - 10:38

PST: 0 1 2 3 4 5 6 7 8 9 10 11 12 13 14 15 16 17 18 19 20 21 22 23 0

WEDNESDAY
DECEMBER 6, 2000
341-342

UTC: 8 9 10 11 12 13 14 15 16 17 18 19 20 21 22 23 0 1 2 3 4 5 6 7 8

RTLT : 22h 16m 6s

VOYAGER 1

FDSL : 11AF

CCSL : A037
TWNC : ON
SB : OFF XB : LOW
PYR : .05/ .10/ .25
GYROS : OFF

↓ 1009 SLEW->HELIO-19B

↓ 2209 SLEW->HELIO-20B

1718 | PLSCAL - | 1900
1718 | --- MAGCAL --- | 2020
1718 | --- PESCAL --- | 2038

▼ 1630 DUMMY (14:46)

2115 | | 2135 AACS MRO
2135 | | 2146 CCS MRO
2146 | | 2159 FDS MRO

FDS MODE
XB DATA RATE (MI)

CR-5T

EH-12

CR-5T

31

1200 | --- 65 [D] --- | 1420

0620 | --- 63 [D] ---

1400 | ----- 14 ----- | 0125

DSN COVERAGE
HPTXR

32

--- | 0845 34 [D]

2055 | ----- 34 [D] ----- | 0130

0530 | --- 45 [D] ---

HPTXR

RTLT : 17h 34m 26s

VOYAGER 2

FDSL : 11AF

CCSL : B109
TWNC : ON
SB : OFF XB : LOW
PYR : .05/ .10/ .25
GYROS : OFF

1200 RTLT=17h 34m 36s

0000 RTLT=17h 34m 44s

COMMAND MORATORIUM 0640 | -----

FDS MODE
XB DATA RATE (MI)

CR-5T

160(32)

VOYAGER COVERAGE

----- ON CALL ----- | - VGR - | ----- ON CALL ----- | - VGR - | ----- ON CALL -----

NOTES

(1) S/C 31=EH-12 @ 2101 XB=1.2K(39)

UTC: 8 9 10 11 12 13 14 15 16 17 18 19 20 21 22 23 0 1 2 3 4 5 6 7 8

ISSUE DATE: 11/30/00 - 10:38

PST: 0 1 2 3 4 5 6 7 8 9 10 11 12 13 14 15 16 17 18 19 20 21 22 23 0

THURSDAY
DECEMBER 7, 2000
342-343

UTC: 8 9 10 11 12 13 14 15 16 17 18 19 20 21 22 23 0 1 2 3 4 5 6 7 8

RTLT : 22h 16m 14s

1200 RTLT=22h 16m 18s

0000 RTLT=22h 16m 24s

VOYAGER 1

FDSL : 11AF

CCSL : A037
TWNC : ON
SB : OFF XB : LOW
PYR : .05/ .10/ .25
GYROS : OFF

FDS MODE
XB DATA RATE (MI)

CR-5T

160(32)

31 --- 63 [D] --- | 1020

1435 |----- 15 [D] -----| 1745

0620 |--- 63 [D] ---|

DSN COVERAGE
HPTXR

32 ----- 45 [D] ----- | 1220

0200 |----- 34 [D] -----|

HPTXR

2335 |--- 45 [D] ---| 0220

RTLT : 17h 34m 44s

1200 RTLT=17h 34m 52s

0000 RTLT=17h 35m 0s

VOYAGER 2

FDSL : 11AF

CCSL : B109
TWNC : ON
SB : OFF XB : LOW
PYR : .05/ .10/ .25
GYROS : OFF

----- COMMAND MORATORIUM -----

- ↓ 2345 GYROS AB ON
- ↓ 2346 GYRO INIT
- ↓ 2355 GYRO FAULT TEST
- ↓ 2359 GYRO FAULT TEST STOP
- ↓ 0000 GYROS BC ON
- ↓ 0000 GYRO INIT
- ↓ 0010 GYRO FAULT TEST

FDS MODE
XB DATA RATE (MI)

CR-5T

160(32)

0047 || 0053 CCSTIM (B)

VOYAGER COVERAGE

----- ON CALL -----

|----- VGR -----|

----- ON CALL -----

NOTES

UTC: 8 9 10 11 12 13 14 15 16 17 18 19 20 21 22 23 0 1 2 3 4 5 6 7 8

ISSUE DATE: 11/30/00 - 10:38

PST: 0 1 2 3 4 5 6 7 8 9 10 11 12 13 14 15 16 17 18 19 20 21 22 23 0

FRIDAY
DECEMBER 8, 2000
343-344

UTC: 8 9 10 11 12 13 14 15 16 17 18 19 20 21 22 23 0 1 2 3 4 5 6 7 8

RTLT : 22h 16m 24s

1200 RTLT=22h 16m 28s

0000 RTLT=22h 16m 32s

VOYAGER 1

FDSL : 11AF

CCSL : A037
TWNC : ON
SB : OFF XB : LOW
PYR : .05/ .10/ .25
GYROS : OFF

FDS MODE
XB DATA RATE (MI)

CR-5T

160(32)

31 ----- 63 [D] ----- | 1130

2110 |----- 24 [D] ----- | 0015

65 [D] 0715 |-----

DSN COVERAGE
HPTXR

32 -- 34 [D] -- | 0935

2015 |----- 45 [D] -----

HPTXR

RTLT : 17h 35m 0s

1200 RTLT=17h 35m 8s

0000 RTLT=17h 35m 16s

COMMAND MORATORIUM

----- | 0624

VOYAGER 2

FDSL : 11AF

CCSL : B109
TWNC : ON
SB : OFF XB : LOW
PYR : .05/ .10/ .25
GYROS : ON

FDS MODE
XB DATA RATE (MI)

CR-5T

160(32)

VOYAGER COVERAGE

----- ON CALL -----

NOTES

UTC: 8 9 10 11 12 13 14 15 16 17 18 19 20 21 22 23 0 1 2 3 4 5 6 7 8

ISSUE DATE: 11/30/00 - 10:38

PST: 0 1 2 3 4 5 6 7 8 9 10 11 12 13 14 15 16 17 18 19 20 21 22 23 0

SATURDAY
DECEMBER 9, 2000
344-345

UTC: 8 9 10 11 12 13 14 15 16 17 18 19 20 21 22 23 0 1 2 3 4 5 6 7 8

RTLTL : 22h 16m 32s

1200 RTLTL=22h 16m 36s

0000 RTLTL=22h 16m 40s

VOYAGER 1

↓ 2009 SLEW->HELIO-20A

FDSL : 11AF

U/L 1830 |-----| TLC (SHORT-FORM) -----|

CCSL : A037
TWNC : ON
SB : OFF XB : LOW
PYR : .05/ .10/ .25
GYROS : OFF

FDS MODE
XB DATA RATE (MI)

CR-5T

160(32)

31 ----- 65 [D] ----- | 1040

1505 |-----| 24 [T] -----| 2320

0610 |-----| 63 [D] -----|

DSN COVERAGE
HPTXR

32 ----- 45 [D] ----- | 1215

2245 |-----| 34 [D] -----| 0615

HPTXR

RTLTL : 17h 35m 16s

1200 RTLTL=17h 35m 24s

0000 RTLTL=17h 35m 32s

VOYAGER 2

FDSL : 11AF

CCSL : B109
TWNC : ON
SB : OFF XB : LOW
PYR : .05/ .10/ .25
GYROS : ON

FDS MODE
XB DATA RATE (MI)

CR-5T

160(32)

VOYAGER COVERAGE

----- ON CALL -----|

NOTES

UTC: 8 9 10 11 12 13 14 15 16 17 18 19 20 21 22 23 0 1 2 3 4 5 6 7 8

ISSUE DATE: 11/30/00 - 10:38

PST: 0 1 2 3 4 5 6 7 8 9 10 11 12 13 14 15 16 17 18 19 20 21 22 23 0

SUNDAY
DECEMBER 10, 2000
345-346

UTC: 8 9 10 11 12 13 14 15 16 17 18 19 20 21 22 23 0 1 2 3 4 5 6 7 8

RTLT : 22h 16m 40s

1200 RTLT=22h 16m 44s

0000 RTLT=22h 16m 48s

↓ 2009 SLEW->HELIO-19A

VOYAGER 1

FDSL : 11AF

CCSL : A037
TWNC : ON
SB : OFF XB : LOW
PYR : .05/ .10/ .25
GYROS : OFF
----- TLC (SHORT-FORM) ----- + D/L - | 1813

FDS MODE CR-5T
XB DATA RATE (MI) 160(32)

31 ----- 63 [D] ----- | 1110 1630 | ----- | 14 [D] ----- | 0045 0605 | -- 63 [D] --

DSN COVERAGE HPTXR

32 ----- 0435 | ----- 45 [D] -----

HPTXR

RTLT : 17h 35m 32s

1200 RTLT=17h 35m 40s

0000 RTLT=17h 35m 48s

VOYAGER 2

FDSL : 11AF

CCSL : B109
TWNC : ON
SB : OFF XB : LOW
PYR : .05/ .10/ .25
GYROS : ON

FDS MODE CR-5T
XB DATA RATE (MI) 160(32)

VOYAGER COVERAGE ----- ON CALL -----

NOTES

UTC: 8 9 10 11 12 13 14 15 16 17 18 19 20 21 22 23 0 1 2 3 4 5 6 7 8

ISSUE DATE: 11/30/00 - 10:38

PST: 0 1 2 3 4 5 6 7 8 9 10 11 12 13 14 15 16 17 18 19 20 21 22 23 0

MONDAY
DECEMBER 11, 2000
346-347

UTC: 8 9 10 11 12 13 14 15 16 17 18 19 20 21 22 23 0 1 2 3 4 5 6 7 8

RTLT : 22h 16m 48s

1200 RTLT=22h 16m 52s

0000 RTLT=22h 16m 56s

VOYAGER 1

↓ 2009 SLEW->HELIO-18A

FDSL : 11AF

CCSL : A037
TWNC : ON
SB : OFF XB : LOW
PYR : .05/ .10/ .25
GYROS : OFF

FDS MODE
XB DATA RATE (MI)

CR-5T

160(32)

31 ----- 63 [D] ----- | 1110

1425 | ----- 15 [D] ----- | 0045

0645 | 65 [D] |

DSN COVERAGE
HPTXR

32 ----- 45 [D] ----- | 1150

0545 | -- 43 [B] --

HPTXR

RTLT : 17h 35m 48s

1200 RTLT=17h 35m 56s

0000 RTLT=17h 36m 2s

VOYAGER 2

↓ 0046 GYRO INIT

FDSL : 11AF

↓ 1830 BEGIN SEQUENCE B110

CCSL : B109
TWNC : ON
SB : OFF XB : LOW
PYR : .05/ .10/ .25
GYROS : ON

DUMMY (5 MIN BRACKETED 23:54) 0617 ▼

FDS MODE
XB DATA RATE (MI)

CR-5T

160(32)

VOYAGER COVERAGE

----- ON CALL -----

----- VGR -----
ON CALL ↑

NOTES

UTC: 8 9 10 11 12 13 14 15 16 17 18 19 20 21 22 23 0 1 2 3 4 5 6 7 8

ISSUE DATE: 11/30/00 - 10:38

PST: 0 1 2 3 4 5 6 7 8 9 10 11 12 13 14 15 16 17 18 19 20 21 22 23 0

TUESDAY
DECEMBER 12, 2000
347-348

UTC: 8 9 10 11 12 13 14 15 16 17 18 19 20 21 22 23 0 1 2 3 4 5 6 7 8

RTLTL : 22h 16m 56s

1200 RTLTL=22h 17m 0s

0000 RTLTL=22h 17m 2s

VOYAGER 1

↓ 2009 SLEW->HELIO-17A

FDSL : 11AF

0039 | 0040 PWS/RH

CCSL : A037
TWNC : ON
SB : OFF XB : LOW
PYR : .05/ .10/ .25
GYROS : OFF

0039
GS-4B 0040

FDS MODE
XB DATA RATE (MI)

CR-5T
160(32)

CR-5T
160(32)

31 65 [D] | 0915

1145 |----- 63 [D] -----| 1735

1920 |----- 15 [D] -----| 0030

DSN COVERAGE
HPTXR

32 ----- 43 [B] ----- | 1215

2115 |----- 34 [o] ----- | 0555

HPTXR

RTLTL : 17h 36m 2s

1200 RTLTL=17h 36m 10s

0000 RTLTL=17h 36m 18s

VOYAGER 2

2340 | 2341 PWS/RH

FDSL : 11AF

↓ 2159 MEMUPD - CMDLOS/BML

CCSL : B110
TWNC : ON
SB : OFF XB : LOW
PYR : .05/ .10/ .25
GYROS : ON

2234 | - | 2257 CCS MRO

0118 | PLSCAL - | 0300
0118 | --- MAGCAL --- | 0420
0118 | --- PESCAL --- | 0438

FDS MODE
XB DATA RATE (MI)

CR-5T
160(32)

2208 CR-5T
2304 GS-4B 2341

EL-40
40(30)

CR-5T
160(32)

VOYAGER COVERAGE

----- ON CALL -----

[3] ↑

VGR

----- ON CALL -----

NOTES

- [1] S/C 32=GS-4B @ 2340 XB=2.8K(41) NOT RECOVERABLE
- [2] S/C 31=GS-4B @ 0039 XB=2.8K(41) NOT RECOVERABLE
- [3] S/C 32=CR-5T @ 2304 XB=160(32)

UTC: 8 9 10 11 12 13 14 15 16 17 18 19 20 21 22 23 0 1 2 3 4 5 6 7 8

ISSUE DATE: 11/30/00 - 10:38

PST: 0 1 2 3 4 5 6 7 8 9 10 11 12 13 14 15 16 17 18 19 20 21 22 23 0

WEDNESDAY
DECEMBER 13, 2000
348-349

UTC: 8 9 10 11 12 13 14 15 16 17 18 19 20 21 22 23 0 1 2 3 4 5 6 7 8

RTLT : 22h 17m 2s

1200 RTLT=22h 17m 6s

0000 RTLT=22h 17m 10s

VOYAGER 1

↓ 2009 SLEW->HELIO-16A

FDSL : 11AF

CCSL : A037
TWNC : ON
SB : OFF XB : LOW
PYR : .05/ .10/ .25
GYROS : OFF

FDS MODE
XB DATA RATE (MI)

CR-5T
160(32)

31

1205 |----- 65 [D] -----| 1520

1715 |----- 15 [D] -----| 0045

DSN COVERAGE
HPTXR

32

2015 |---- 45 [D] ----| 2245

0530 |---- 45 [D] ----|

HPTXR

RTLT : 17h 36m 18s

1200 RTLT=17h 36m 26s

0000 RTLT=17h 36m 34s

VOYAGER 2

FDSL : 11AF

CCSL : B110
TWNC : ON
SB : OFF XB : LOW
PYR : .05/ .10/ .25
GYROS : ON

FDS MODE
XB DATA RATE (MI)

CR-5T
160(32)

VOYAGER COVERAGE

----- ON CALL -----

NOTES

UTC: 8 9 10 11 12 13 14 15 16 17 18 19 20 21 22 23 0 1 2 3 4 5 6 7 8

ISSUE DATE: 11/30/00 - 10:38

PST: 0 1 2 3 4 5 6 7 8 9 10 11 12 13 14 15 16 17 18 19 20 21 22 23 0

THURSDAY
DECEMBER 14, 2000
349-350

UTC: 8 9 10 11 12 13 14 15 16 17 18 19 20 21 22 23 0 1 2 3 4 5 6 7 8

RTLT : 22h 17m 10s

1200 RTLT=22h 17m 14s

0000 RTLT=22h 17m 18s

↓ 2009 SLEW->HELIO-15A

VOYAGER 1

FDSL : 11AF

CCSL : A037
TWNC : ON
SB : OFF XB : LOW
PYR : .05/ .10/ .25
GYROS : OFF

FDS MODE
XB DATA RATE (MI)

CR-5T
160(32)

31

1400 |----- 15 [D] -----| 1715

2200 |-- 24 [D] ---| 0010

0550 |--- 63 [D] ---|

DSN COVERAGE
HPTXR

32

----- 45 [D] -----| 1145

2330 - 0735 |----- 43 [D] -----|

HPTXR

RTLT : 17h 36m 34s

1200 RTLT=17h 36m 40s

0000 RTLT=17h 36m 48s

1347 |----- COMMAND MORATORIUM -----|

VOYAGER 2

FDSL : 11AF

CCSL : B110
TWNC : ON
SB : OFF XB : LOW
PYR : .05/ .10/ .25
GYROS : ON

↓ 0055 AAI

0058 |----- MAGROL -----| 0654

RAI 0647 ↓
CRU 0654 ↓
GYROS OFF 0654 ↓

FDS MODE
XB DATA RATE (MI)

CR-5T
160(32)

VOYAGER COVERAGE

----- ON CALL -----|----- VGR -----|

NOTES

[1] S/C 32 - D/L AGC VARIATIONS EXPECTED DURING MAGROL (0058-0654)

UTC: 8 9 10 11 12 13 14 15 16 17 18 19 20 21 22 23 0 1 2 3 4 5 6 7 8

ISSUE DATE: 11/30/00 - 10:38

PST: 0 1 2 3 4 5 6 7 8 9 10 11 12 13 14 15 16 17 18 19 20 21 22 23 0

FRIDAY
DECEMBER 15, 2000
350-351

UTC: 8 9 10 11 12 13 14 15 16 17 18 19 20 21 22 23 0 1 2 3 4 5 6 7 8

RTLT : 22h 17m 18s

1200 RTLT=22h 17m 20s

0000 RTLT=22h 17m 24s

VOYAGER 1

↓ 2009 SLEW->HELIO-14A

FDSL : 11AF

▼ 1900 DUMMY (17:17)

U/L 0715 | - | - |
TLC (SHORT-FORM)

CCSL : A037
TWNC : ON
SB : OFF XB : LOW
PYR : .05/ .10/ .25
GYROS : OFF

FDS MODE
XB DATA RATE (MI)

CR-5T

160(32)

31 ----- 63 [D] ----- | 1100

1325 | ----- 14 ----- | 2315

0600 | -- 63 [T] -- |

DSN COVERAGE
HPTXR

2040 | ----- 34 [D] ----- | 0230 0425 | ----- 45 [D] -----

32

HPTXR

RTLT : 17h 36m 48s

1200 RTLT=17h 36m 56s

0000 RTLT=17h 37m 2s

VOYAGER 2

----- COMMAND MORATORIUM -----

FDSL : 11AF

CCSL : B110
TWNC : ON
SB : OFF XB : LOW
PYR : .05/ .10/ .25
GYROS : OFF

FDS MODE
XB DATA RATE (MI)

CR-5T

160(32)

VOYAGER COVERAGE

----- ON CALL ----- | - VGR - | ----- ON CALL ----- |

NOTES

UTC: 8 9 10 11 12 13 14 15 16 17 18 19 20 21 22 23 0 1 2 3 4 5 6 7 8

ISSUE DATE: 11/30/00 - 10:38

PST: 0 1 2 3 4 5 6 7 8 9 10 11 12 13 14 15 16 17 18 19 20 21 22 23 0

SATURDAY
DECEMBER 16, 2000
351-352

UTC: 8 9 10 11 12 13 14 15 16 17 18 19 20 21 22 23 0 1 2 3 4 5 6 7 8

RTLTL : 22h 17m 24s

1200 RTLTL=22h 17m 28s

0000 RTLTL=22h 17m 30s

VOYAGER 1

↓ 2009 SLEW->HELIO-13A

FDSL : 11AF

TLC (SHORT-FORM)

D/L -| 0700

CCSL : A037
TWNC : ON
SB : OFF XB : LOW
PYR : .05/ .10/ .25
GYROS : OFF

FDS MODE
XB DATA RATE (MI)

CR-5T

160(32)

31

63 [T] -----| 1500

1700 |----- 15 [D] -----| 0015

0545 |--- 63 [D] ---

DSN COVERAGE
HPTXR

32

45 [D] -----| 1140

2000 |----- 45 [D] -----

HPTXR

RTLTL : 17h 37m 2s

1200 RTLTL=17h 37m 10s

0000 RTLTL=17h 37m 16s

COMMAND MORATORIUM ----| 1317

VOYAGER 2

FDSL : 11AF

CCSL : B110
TWNC : ON
SB : OFF XB : LOW
PYR : .05/ .10/ .25
GYROS : OFF

FDS MODE
XB DATA RATE (MI)

CR-5T

160(32)

VOYAGER COVERAGE

ON CALL

NOTES

UTC: 8 9 10 11 12 13 14 15 16 17 18 19 20 21 22 23 0 1 2 3 4 5 6 7 8

ISSUE DATE: 11/30/00 - 10:38

PST: 0 1 2 3 4 5 6 7 8 9 10 11 12 13 14 15 16 17 18 19 20 21 22 23 0

SUNDAY
DECEMBER 17, 2000
352-353

UTC: 8 9 10 11 12 13 14 15 16 17 18 19 20 21 22 23 0 1 2 3 4 5 6 7 8

RTLT : 22h 17m 30s

1200 RTLT=22h 17m 34s

0000 RTLT=22h 17m 36s

VOYAGER 1

↓ 2009 SLEW->HELIO-12A

FDSL : 11AF

CCSL : A037
TWNC : ON
SB : OFF XB : LOW
PYR : .05/ .10/ .25
GYROS : OFF

FDS MODE
XB DATA RATE (MI)

CR-5T

160(32)

31 ----- 63 [D] ----- | 1055

1300 |

14 [D]

| 0015

0540 | --- 63 [D] ---

DSN COVERAGE
HPTXR

32 | 0815 45 [D]

43 [B] 0715 | ---

HPTXR

RTLT : 17h 37m 16s

1200 RTLT=17h 37m 24s

0000 RTLT=17h 37m 30s

VOYAGER 2

FDSL : 11AF

CCSL : B110
TWNC : ON
SB : OFF XB : LOW
PYR : .05/ .10/ .25
GYROS : OFF

FDS MODE
XB DATA RATE (MI)

CR-5T

160(32)

VOYAGER COVERAGE

----- ON CALL -----

NOTES

UTC: 8 9 10 11 12 13 14 15 16 17 18 19 20 21 22 23 0 1 2 3 4 5 6 7 8