

ISSUE DATE: 09/07/01 - 14:56

PDT: 0 1 2 3 4 5 6 7 8 9 10 11 12 13 14 15 16 17 18 19 20 21 22 23 0

THURSDAY
SEPTEMBER 6, 2001
249-250

Wk36

UTC: 7 8 9 10 11 12 13 14 15 16 17 18 19 20 21 22 23 0 1 2 3 4 5 6 7

RTLTL : 22h 48m 2s

1200 RTLTL=22h 48m 14s

0000 RTLTL=22h 48m 26s

VOYAGER 1

FDSL : 11AF

CCSL : A040
TWNC : ON
SB : OFF XB : LOW
PYR : .05/ .10/ .25
GYROS : OFF

S/C 31 STATUS

FDS CLOCK DRIFT:
ADD TO S/C EVENT
ERT: -22.028 sec

ROLLREF = RIGIL
KENTAURUS

FDS MODE
XB DATA RATE (MI)

CR-5T

160 (32)

31

----- 34 [D] ----- | 0705 - 1035

0250 - 0640 | ----- 25 [D] ----- |

DSN COVERAGE
HPTXR

32

1120 | ----- 34 [D] ----- | 1805

0540 | 34 [D] -

HPTXR

RTLTL : 17h 52m 20s

1200 RTLTL=17h 52m 32s

0000 RTLTL=17h 52m 42s

VOYAGER 2

FDSL : 11AF

CCSL : B113
TWNC : ON
SB : OFF XB : HIGH
PYR : .05/ .10/ .25
GYROS : OFF

--- COMMAND MORATORIUM --- | 1210
1254 |

----- COMMAND MORATORIUM -----

S/C 32 STATUS

FDS CLOCK DRIFT:
ADD TO S/C EVENT
ERT: -81.585 sec

ROLLREF = VEGA

GYROS BC ON 0617 ↓

GYRO INIT 0617 ↓

GYRO FAULT TEST 0627 ↓

FDS MODE
XB DATA RATE (MI)

CR-5T

160 (32)

VOYAGER COVERAGE

----- ON CALL ----- | - VGR - |

NOTES

UTC: 7 8 9 10 11 12 13 14 15 16 17 18 19 20 21 22 23 0 1 2 3 4 5 6 7

ISSUE DATE: 09/07/01 - 14:56

PDT: 0 1 2 3 4 5 6 7 8 9 10 11 12 13 14 15 16 17 18 19 20 21 22 23 0

FRIDAY
SEPTEMBER 7, 2001
250-251

UTC: 7 8 9 10 11 12 13 14 15 16 17 18 19 20 21 22 23 0 1 2 3 4 5 6 7

RTLT : 22h 48m 26s

1200 RTLT=22h 48m 38s

0000 RTLT=22h 48m 50s

VOYAGER 1

FDSL : 11AF

▼ 1700 DUMMY (NO D/L)

CCSL : A040
TWNC : ON
SB : OFF XB : LOW
PYR : .05/ .10/ .25
GYROS : OFF

FDS MODE
XB DATA RATE (MI)

CR-5T

160 (32)

31

1615 |----- 54 -----| 1920

2035 |----- 15 [D] -----| 0120

34 [D] 0615 |-----

DSN COVERAGE HPTXR

32

----- 34 [D] -----| 1815

HPTXR

1200 RTLT=17h 52m 52s

0000 RTLT=17h 53m 4s

RTLT : 17h 52m 42s

VOYAGER 2

----- COMMAND MORATORIUM -----

FDSL : 11AF

| 0721 - 0727 CCSTIM(B)

2036 | 2037 PWS/RH

1734 | | 1749 TAPPOS

2244 | 2245 TAPPOS

CCSL : B113
TWNC : ON
SB : OFF XB : HIGH
PYR : .05/ .10/ .25
GYROS : BC ON

2036 GS-4B
2037

FDS MODE
XB DATA RATE (MI)

CR-5T

160 (32)

CR-5T

160(32)

VOYAGER COVERAGE

|----- ON CALL -----| - VGR - |----- ON CALL -----|
↑ VGR

NOTES

[1] S/C 32=GS-4B @ 2036 XB=2.8K(41) NOT RECOVERABLE

UTC: 7 8 9 10 11 12 13 14 15 16 17 18 19 20 21 22 23 0 1 2 3 4 5 6 7

ISSUE DATE: 09/07/01 - 14:56

PDT: 0 1 2 3 4 5 6 7 8 9 10 11 12 13 14 15 16 17 18 19 20 21 22 23 0

SATURDAY
SEPTEMBER 8, 2001
251-252

UTC: 7 8 9 10 11 12 13 14 15 16 17 18 19 20 21 22 23 0 1 2 3 4 5 6 7

RTLT : 22h 48m 50s

1200 RTLT=22h 49m 2s

0000 RTLT=22h 49m 14s

VOYAGER 1

FDSL : 11AF

DELINK APPW PATCH (02:44) 0355 ▼

CCSL : A040
TWNC : ON
SB : OFF XB : LOW
PYR : .05/ .10/ .25
GYROS : OFF

SLEW TEST, PITCH DB MINI-SEQ (02:49) 0400 ▼

FDS MODE
XB DATA RATE (MI)

CR-5T

160 (32)

31 ----- 34 [D] ----- | 1025

0320 - 0700 | ----- 43 -----

DSN COVERAGE
HPTXR

32 1125 | ----- 34 [o] ----- | 1755

HPTXR

RTLT : 17h 53m 4s

1200 RTLT=17h 53m 14s

0000 RTLT=17h 53m 24s

VOYAGER 2

----- COMMAND MORATORIUM ----- | 1224

FDSL : 11AF

CCSL : B113
TWNC : ON
SB : OFF XB : HIGH
PYR : .05/ .10/ .25
GYROS : BC ON

FDS MODE
XB DATA RATE (MI)

CR-5T

160(32)

VOYAGER COVERAGE

----- ON CALL ----- | ----- VGR ----- | ----- ON CALL -----

NOTES

UTC: 7 8 9 10 11 12 13 14 15 16 17 18 19 20 21 22 23 0 1 2 3 4 5 6 7

ISSUE DATE: 09/07/01 - 14:56

PDT: 0 1 2 3 4 5 6 7 8 9 10 11 12 13 14 15 16 17 18 19 20 21 22 23 0

SUNDAY
SEPTEMBER 9, 2001
252-253

UTC: 7 8 9 10 11 12 13 14 15 16 17 18 19 20 21 22 23 0 1 2 3 4 5 6 7

RTLTL : 22h 49m 14s
 VOYAGER 1
 FDSL : 11AF
 CCSL : A040
 TWNC : ON
 SB : OFF XB : LOW
 PYR : .05/ .10/ .25
 GYROS : OFF

1200 | RTLTL=22h 49m 26s
 0000 | RTLTL=22h 49m 38s

*
 ↓ 0244 DELINK APPW PATCH
 *
 MINI-SEQ D/L + CHKSUM 0249 | - | 0319

▽ 1610 DELINK APPW PATCH (15:00) (NOTE 1)
 ▽ 1615 SLEW TEST, PITCH DB MINI-SEQ (15:05) (NOTE 1)

FDS MODE CR-5T
 XB DATA RATE (MI) 160 (32)

31 0700 43
 1545 | ----- 54 ----- | 1950
 0200 | 14 [D] - | 0330 [NOTE 2]

DSN COVERAGE HPTXR 2215 | ----- 24 [D] ----- | 0530
 32 | ----- 43 [D] ----- | 0745 - 1630
 HPTXR

RTLTL : 17h 53m 24s
 VOYAGER 2
 FDSL : 11AF
 CCSL : B113
 TWNC : ON
 SB : OFF XB : HIGH
 PYR : .05/ .10/ .25
 GYROS : BC ON

1200 | RTLTL=17h 53m 36s
 0000 | RTLTL=17h 53m 46s

FDS MODE CR-5T
 XB DATA RATE (MI) 160(32)

VOYAGER COVERAGE ----- ON CALL ----- | - VGR - | ----- ON CALL ----- | - VGR - | ----- ON CALL -----
 [NOTE 1] [NOTE 2]

NOTES
 [1] ONLY IF MINI-SEQ NOT SENT ON DSS-43
 [2] IF DSS-24 IS NOT OPERATIONAL

UTC: 7 8 9 10 11 12 13 14 15 16 17 18 19 20 21 22 23 0 1 2 3 4 5 6 7

ISSUE DATE: 09/07/01 - 14:56

PDT: 0 1 2 3 4 5 6 7 8 9 10 11 12 13 14 15 16 17 18 19 20 21 22 23 0

MONDAY
SEPTEMBER 10, 2001
253-254

UTC: 7 8 9 10 11 12 13 14 15 16 17 18 19 20 21 22 23 0 1 2 3 4 5 6 7

RTLT : 22h 49m 38s
VOYAGER 1
FDSL : 11AF
CCSL : A040
TWNC : ON
SB : OFF XB : LOW
PYR : .05/ .10/ .25
GYROS : OFF

1200 RTLT=22h 49m 50s
0000 RTLT=22h 50m 2s

0110 | BAY 1 HTR OFF
0114 | XB HI PWR

*
↓ 1500 DELINK APPW PATCH (NOTE 1)
*
1505 | - | 1535 MINI-SEQ D/L + CHKSUM (NOTE 1)

▼ 0200 DUMMY CC (00:50)
0215 | - | 0250 SP SLEW TEST

FDS MODE	CR-5T	0121	0310
XB DATA RATE (MI)	160 (32)	EH-1200 1.2K(39)	CR-5T 160(32)

31
1445 | - - - 43 [D] - - - | 1705
2040 | - - - - - 25 [D] - - - - - | 0115
0100 - 0615 | - - - - - 14 - - - - - |

DSN COVERAGE HPTXR
32
1025 | - - - - - 43 [o] - - - - - | 1400
43 [B] 0645 | - - - - -

HPTXR

RTLT : 17h 53m 46s
VOYAGER 2
FDSL : 11AF
CCSL : B113
TWNC : ON
SB : OFF XB : HIGH
PYR : .05/ .10/ .25
GYROS : BC ON

1200 RTLT=17h 53m 58s
0000 RTLT=17h 54m 8s

FDS MODE	CR-5T
XB DATA RATE (MI)	160(32)

VOYAGER COVERAGE
- - - - - ON CALL - - - - - | - - VGR - - - | - - - - - ON CALL - - - - - | - - - - - VGR - - - - - | - - ON CALL - - - | -
VGR ↑

NOTES
[1] ONLY IF UPLINKED ON CONTINGENCY OPPORTUNITY, DSS-54

UTC: 7 8 9 10 11 12 13 14 15 16 17 18 19 20 21 22 23 0 1 2 3 4 5 6 7

ISSUE DATE: 09/07/01 - 14:56

PDT: 0 1 2 3 4 5 6 7 8 9 10 11 12 13 14 15 16 17 18 19 20 21 22 23 0

TUESDAY
SEPTEMBER 11, 2001
254-255

UTC: 7 8 9 10 11 12 13 14 15 16 17 18 19 20 21 22 23 0 1 2 3 4 5 6 7

RTLT : 22h 50m 2s
 VOYAGER 1
 FDSL : 11AF
 CCSL : A040
 TWNC : ON
 SB : OFF XB : HIGH
 PYR : .05/ .10/ .25
 GYROS : OFF

1200 RTLT=22h 50m 14s
 0000 RTLT=22h 50m 26s

↓ 2100 GYROS AB ON
 ↓ 2101 GYRO INIT
 ↓ 2110 GYRO FAULT TEST

PWS/RH 0543 | 0544

0135 | PLSCAL - | 0317
 0135 | ---- MAGCAL ---- | 0437
 0135 | ----- PESCAL ----- | 0455

↓ 2057 P DEADBAND -> 0.1 °

0543 GS-4B
 0544

FDS MODE	CR-5T	CR-5T
XB DATA RATE (MI)	160(32)	160(32)

31
 DSN COVERAGE HPTXR
 2035 |----- 15 [D] -----| 0115
 34 [T] 0630 |-----

32
 HPTXR
 ----- 43 [B] ----- | 1705

HPTXR

RTLT : 17h 54m 8s
 VOYAGER 2
 FDSL : 11AF
 CCSL : B113
 TWNC : ON
 SB : OFF XB : HIGH
 PYR : .05/ .10/ .25
 GYROS : BC ON

1200 RTLT=17h 54m 20s
 0000 RTLT=17h 54m 30s

↓ 0733 ALL DB=.05
 ↓ 0749 AAI
 0750 | - - | 0827 ASCAL
 ↓ 0825 RAI
 ↓ 0827 CRU
 ↓ 0836 ROLL=.25
 ↓ 0836 YAW=.10
 ↓ 0837 GYRO FAULT TEST

▼ 1607 DUMMY CC (NO D/L)

0437 | 0438 PWS/RH

0437 GS-4B
 0438

FDS MODE	EL-40	CR-5T	CR-5T
XB DATA RATE (MI)	40(30)	160(32)	160(32)

VOYAGER COVERAGE
 --- VGR --- |----- ON CALL ----- | - VGR - | - ON CALL - - - | - VGR - |----- ON CALL ----- |

NOTES
 [1] S/C 32=CR-5T @ 0700 - 0718 XB=160(32)
 [2] S/C 32 - D/L AGC/SNR VARIATIONS EXPECTED DURING ASCAL (0750-0827)
 [3] S/C 32=GS-4B @ 0437 XB=2.8K(41) NOT RECOVERABLE
 [4] S/C 31=GS-4B @ 0543 XB=2.8K(41) NOT RECOVERABLE

UTC: 7 8 9 10 11 12 13 14 15 16 17 18 19 20 21 22 23 0 1 2 3 4 5 6 7

ISSUE DATE: 09/07/01 - 14:56

PDT: 0 1 2 3 4 5 6 7 8 9 10 11 12 13 14 15 16 17 18 19 20 21 22 23 0

WEDNESDAY
SEPTEMBER 12, 2001
255-256

UTC: 7 8 9 10 11 12 13 14 15 16 17 18 19 20 21 22 23 0 1 2 3 4 5 6 7

RTLT : 22h 50m 26s

1200 RTLT=22h 50m 38s

0000 RTLT=22h 50m 50s

VOYAGER 1

FDSL : 11AF

U/L | - | 0730 -

TLC (SHORT-FORM)

D/L

CCSL : A040
TWNC : ON
SB : OFF XB : HIGH
PYR : .05/ .10/ .25
GYROS : AB ON

FDS MODE
XB DATA RATE (MI)

CR-5T

160(32)

31 --- 34 [T] --- | 0930

2045 | --- 25 [D] --- | 0600

34 [D] 0625 | - -

DSN COVERAGE
HPTXR

32 1240 | - - - - - 34 [D] - - - - - | 1700

HPTXR

RTLT : 17h 54m 30s

1200 RTLT=17h 54m 42s

0000 RTLT=17h 54m 52s

VOYAGER 2

FDSL : 11AF

CCSL : B113
TWNC : ON
SB : OFF XB : HIGH
PYR : .05 / .10 / .25
GYROS : BC ON

FDS MODE
XB DATA RATE (MI)

CR-5T

160(32)

VOYAGER COVERAGE

ON CALL

NOTES

UTC: 7 8 9 10 11 12 13 14 15 16 17 18 19 20 21 22 23 0 1 2 3 4 5 6 7

ISSUE DATE: 09/07/01 - 14:56

PDT: 0 1 2 3 4 5 6 7 8 9 10 11 12 13 14 15 16 17 18 19 20 21 22 23 0

THURSDAY
SEPTEMBER 13, 2001
256-257

UTC: 7 8 9 10 11 12 13 14 15 16 17 18 19 20 21 22 23 0 1 2 3 4 5 6 7

RTLTL : 22h 50m 50s
 VOYAGER 1
 FDSL : 11AF
 CCSL : A040
 TWNC : ON
 SB : OFF XB : HIGH
 PYR : .05/ .10/ .25
 GYROS : AB ON

D/L | 0748

1200 | RTLTL=22h 51m 2s
 0000 | RTLTL=22h 51m 12s

FDS MODE CR-5T
 XB DATA RATE (MI) 160(32)

31 ----- 34 [D] ----- | 1020
 0315 - 0615 | ----- 15 [D] ----- |

HPTXR

DSN COVERAGE
 32 1105 | ----- 34 [D] ----- | 1750
 45 [D] 0650 |

HPTXR

RTLTL : 17h 54m 52s
 VOYAGER 2
 FDSL : 11AF
 CCSL : B113
 TWNC : ON
 SB : OFF XB : HIGH
 PYR : .05 / .10 / .25
 GYROS : BC ON

1200 | RTLTL=17h 55m 4s
 2001 | ----- COMMAND MORATORIUM -----

FDS MODE CR-5T
 XB DATA RATE (MI) 160(32)

VOYAGER COVERAGE ----- ON CALL ----- + |

NOTES
VGR ↑

UTC: 7 8 9 10 11 12 13 14 15 16 17 18 19 20 21 22 23 0 1 2 3 4 5 6 7

ISSUE DATE: 09/07/01 - 14:56

PDT: 0 1 2 3 4 5 6 7 8 9 10 11 12 13 14 15 16 17 18 19 20 21 22 23 0

FRIDAY
SEPTEMBER 14, 2001
257-258

UTC: 7 8 9 10 11 12 13 14 15 16 17 18 19 20 21 22 23 0 1 2 3 4 5 6 7

RTLT : 22h 51m 12s
 VOYAGER 1
 FDSL : 11AF
 CCSL : A040
 TWNC : ON
 SB : OFF XB : HIGH
 PYR : .05/ .10/ .25
 GYROS : AB ON

FDS MODE CR-5T
 XB DATA RATE (MI) 160(32)

1200 RTLT=22h 51m 24s 0000 RTLT=22h 51m 36s

31 0450 --- 34 [D] ---

DSN COVERAGE HPTXR

32 ----- 45 [D] ----- | 1450

HPTXR

RTLT : 17h 55m 14s
 VOYAGER 2
 FDSL : 11AF
 CCSL : B113
 TWNC : ON
 SB : OFF XB : HIGH
 PYR : .05 / .10 / .25
 GYROS : BC ON

FDS MODE CR-5T
 XB DATA RATE (MI) 160(32)

1200 RTLT=17h 55m 26s 0000 RTLT=17h 55m 38s

COMMAND MORATORIUM

↓ 0728 AAI
 |----- MAGROL -----| 0731 - 1327
 ↓ 1320 RAI
 ↓ 1327 CRU
 ↓ 1327 GYROS OFF

VOYAGER COVERAGE

----- VGR ----- |----- ON CALL -----

NOTES [1] S/C 32 - D/L AGC VARIATIONS EXPECTED DURING MAGROL (0731-1327)

UTC: 7 8 9 10 11 12 13 14 15 16 17 18 19 20 21 22 23 0 1 2 3 4 5 6 7

ISSUE DATE: 09/07/01 - 14:56

PDT: 0 1 2 3 4 5 6 7 8 9 10 11 12 13 14 15 16 17 18 19 20 21 22 23 0

SATURDAY
SEPTEMBER 15, 2001
258-259

UTC: 7 8 9 10 11 12 13 14 15 16 17 18 19 20 21 22 23 0 1 2 3 4 5 6 7

RTLTL : 22h 51m 36s
 VOYAGER 1
 FDSL : 11AF
 CCSL : A040
 TWNC : ON
 SB : OFF XB : HIGH
 PYR : .05/ .10/ .25
 GYROS : AB ON

↓ 2201 GYRO INIT

FDS MODE CR-5T
 XB DATA RATE (MI) 160(32)

31 --- 34 [D] --- | 0905
 2020 |----- 25 [D] -----| 0550

DSN COVERAGE HPTXR
 32 1005 |----- 34 [o] -----| 1730
 0535 | 34 [D] -

HPTXR

RTLTL : 17h 55m 38s
 VOYAGER 2
 FDSL : 11AF
 CCSL : B113
 TWNC : ON
 SB : OFF XB : HIGH
 PYR : .05 / .10 / .25
 GYROS : OFF

1200 RTLTL=17h 55m 48s
 COMMAND MORATORIUM -----| 1931
 0000 RTLTL=17h 56m 0s

1336 | | 1349 TAPPOS
 1845 | 1846 TAPPOS

1637 GS-4B
 1638

FDS MODE CR-5T
 XB DATA RATE (MI) 160(32)

VOYAGER COVERAGE ----- ON CALL -----

NOTES [1] S/C 32=GS-4B @ 1637 XB=2.8K(41) NOT RECOVERABLE

UTC: 7 8 9 10 11 12 13 14 15 16 17 18 19 20 21 22 23 0 1 2 3 4 5 6 7

ISSUE DATE: 09/07/01 - 14:56

PDT: 0 1 2 3 4 5 6 7 8 9 10 11 12 13 14 15 16 17 18 19 20 21 22 23 0

SUNDAY
SEPTEMBER 16, 2001
259-260

UTC: 7 8 9 10 11 12 13 14 15 16 17 18 19 20 21 22 23 0 1 2 3 4 5 6 7

RTLT : 22h 52m 0s
 VOYAGER 1
 FDSL : 11AF
 CCSL : A040
 TWNC : ON
 SB : OFF XB : HIGH
 PYR : .05/ .10/ .25
 GYROS : AB ON

FDS MODE CR-5T
 XB DATA RATE (MI) 160(32)

1200 RTLT=22h 52m 12s

0000 RTLT=22h 52m 24s

31

2015 |----- 25 [D] -----| 0600

DSN COVERAGE HPTXR

32

34 [D] -----| 1740

HPTXR

RTLT : 17h 56m 0s
 VOYAGER 2
 FDSL : 11AF
 CCSL : B113
 TWNC : ON
 SB : OFF XB : HIGH
 PYR : .05 / .10 / .25
 GYROS : OFF

FDS MODE CR-5T
 XB DATA RATE (MI) 160(32)

1200 RTLT=17h 56m 12s

0000 RTLT=17h 56m 22s

VOYAGER COVERAGE

ON CALL

NOTES

UTC: 7 8 9 10 11 12 13 14 15 16 17 18 19 20 21 22 23 0 1 2 3 4 5 6 7

ISSUE DATE: 09/07/01 - 14:56

PDT: 0 1 2 3 4 5 6 7 8 9 10 11 12 13 14 15 16 17 18 19 20 21 22 23 0

MONDAY
SEPTEMBER 17, 2001
260-261

UTC: 7 8 9 10 11 12 13 14 15 16 17 18 19 20 21 22 23 0 1 2 3 4 5 6 7

RTLT : 22h 52m 24s
 VOYAGER 1
 FDSL : 11AF
 CCSL : A040
 TWNC : ON
 SB : OFF XB : HIGH
 PYR : .05/ .10/ .25
 GYROS : AB ON

↓ 2200 MEMUPD - ENA AHELIO

FDS MODE CR-5T
 XB DATA RATE (MI) 160(32)

31 2010 |----- 25 [D] -----| 0545

DSN COVERAGE HPTXR

32 1230 |----- 34 [D] -----| 1720 34 [D] 0625 |-----

HPTXR

RTLT : 17h 56m 22s
 VOYAGER 2
 FDSL : 11AF
 CCSL : B113
 TWNC : ON
 SB : OFF XB : HIGH
 PYR : .05 / .10 / .25
 GYROS : OFF

FDS MODE CR-5T
 XB DATA RATE (MI) 160(32)

VOYAGER COVERAGE

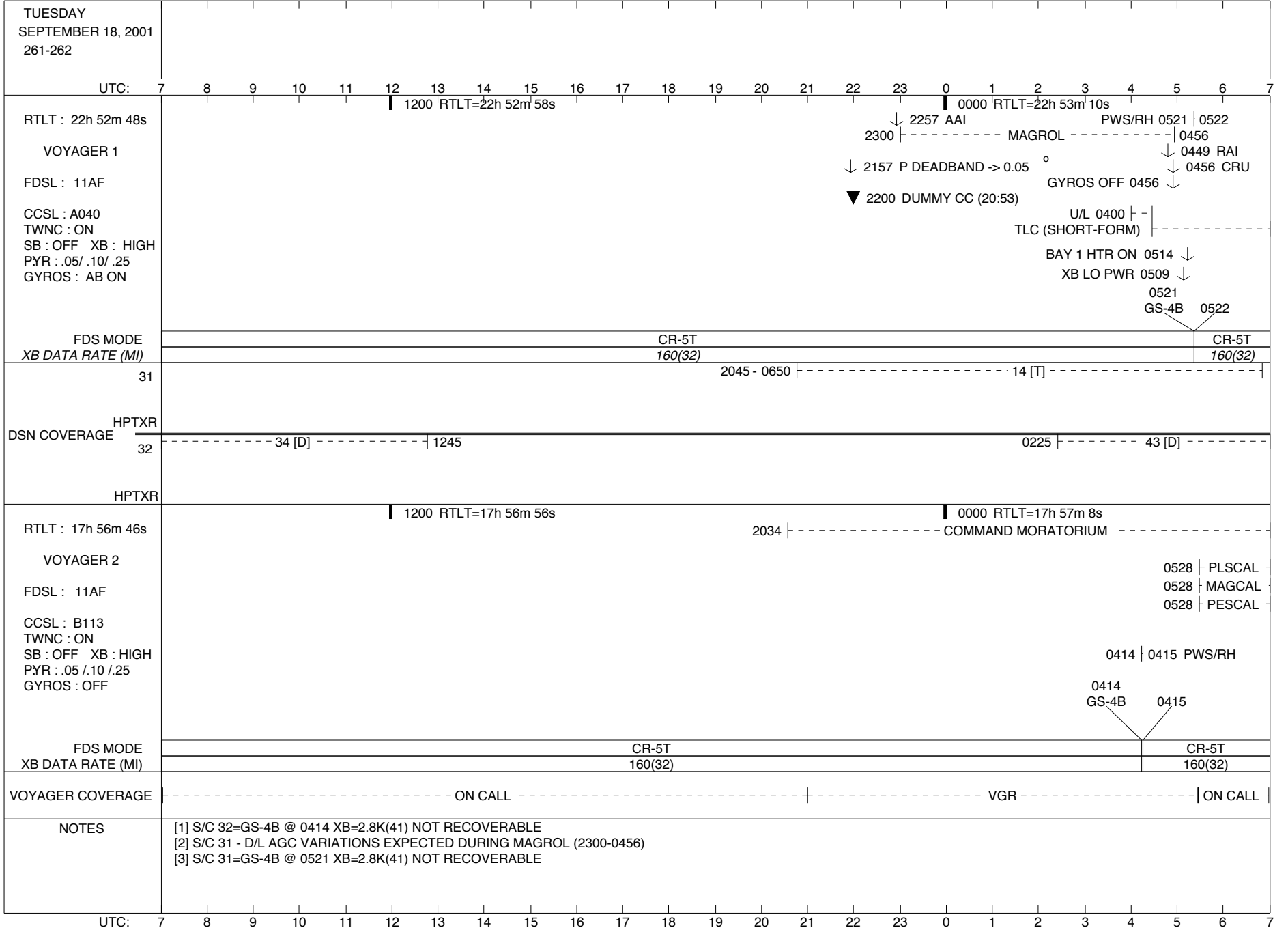
----- ON CALL -----

NOTES

UTC: 7 8 9 10 11 12 13 14 15 16 17 18 19 20 21 22 23 0 1 2 3 4 5 6 7

ISSUE DATE: 09/07/01 - 14:56

PDT: 0 1 2 3 4 5 6 7 8 9 10 11 12 13 14 15 16 17 18 19 20 21 22 23 0



ISSUE DATE: 09/07/01 - 14:56

PDT: 0 1 2 3 4 5 6 7 8 9 10 11 12 13 14 15 16 17 18 19 20 21 22 23 0

WEDNESDAY
SEPTEMBER 19, 2001
262-263

UTC: 7 8 9 10 11 12 13 14 15 16 17 18 19 20 21 22 23 0 1 2 3 4 5 6 7

RTLT : 22h 53m 10s

1200 RTLT=22h 53m 22s 0000 RTLT=22h 53m 34s

VOYAGER 1

FDSL : 11AF

1603 | TAPPOS | 1726

CCSL : A040
TWNC : ON
SB : OFF XB : LOW
PYR : .05/ .10/ .25
GYROS : OFF

TLC (SHORT-FORM) D/L - | 0421

1908
GS-4B 1909

0428
GS-4B 0429

FDS MODE
XB DATA RATE (MI)

CR-5T
160(32)

CR-5T
160(32)

CR-5T
160(32)

31

2025 |-----| 25 [D] -----| 0530

DSN COVERAGE
HPTXR

32

43 [D] -----| 1325
1350 | 45 [D] | 1450

HPTXR

RTLT : 17h 57m 8s

1200 RTLT=17h 57m 20s 0000 RTLT=17h 57m 30s

VOYAGER 2

----- COMMAND MORATORIUM -----

FDSL : 11AF

↓ 1401 X/B LOW POWER
↓ 1405 BAY 1 HTR ON
| 0710 PLSCAL
MAGCAL | 0830
PESCAL - | 0848

CCSL : B113
TWNC : ON
SB : OFF XB : HIGH
PYR : .05 / .10 / .25
GYROS : OFF

FDS MODE
XB DATA RATE (MI)

CR-5T
160(32)

VOYAGER COVERAGE

----- ON CALL ----- |--- VGR ---| ----- ON CALL -----

NOTES

[1] S/C 31=GS-4B @ 1908 XB=2.8K(41) NOT RECOVERABLE
[2] S/C 31=GS-4B @ 0428 XB=2.8K(41) NOT RECOVERABLE

UTC: 7 8 9 10 11 12 13 14 15 16 17 18 19 20 21 22 23 0 1 2 3 4 5 6 7

ISSUE DATE: 09/07/01 - 14:56

PDT: 0 1 2 3 4 5 6 7 8 9 10 11 12 13 14 15 16 17 18 19 20 21 22 23 0

THURSDAY
SEPTEMBER 20, 2001
263-264

UTC: 7 8 9 10 11 12 13 14 15 16 17 18 19 20 21 22 23 0 1 2 3 4 5 6 7

RTLT : 22h 53m 34s

1200 RTLT=22h 53m 46s | 0000 RTLT=22h 53m 58s

VOYAGER 1

FDSL : 11AF

CCSL : A040
TWNC : ON
SB : OFF XB : LOW
PYR : .05/ .10/ .25
GYROS : OFF

1348
GS-4B 1349

2308
GS-4B 2309

FDS MODE	CR-5T	CR-5T	CR-5T
XB DATA RATE (MI)	160(32)	160(32)	160(32)

31 2330 |-----15 [D]-----| 0545

DSN COVERAGE HPTXR

32 0815 |-----43 [o]-----| 1420 34 [o] 0615 |-----

HPTXR

RTLT : 17h 57m 30s

1200 RTLT=17h 57m 42s | 0000 RTLT=17h 57m 54s
-----COMMAND MORATORIUM-----| 2008

VOYAGER 2

FDSL : 11AF

CCSL : B113
TWNC : ON
SB : OFF XB : LOW
PYR : .05/ .10/ .25
GYROS : OFF

FDS MODE	CR-5T
XB DATA RATE (MI)	160(32)

VOYAGER COVERAGE |-----ON CALL-----|

NOTES

[1] S/C 31=GS-4B @ 1348 XB=2.8K(41) NOT RECOVERABLE
[2] S/C 31=GS-4B @ 2308 XB=2.8K(41) NOT RECOVERABLE

UTC: 7 8 9 10 11 12 13 14 15 16 17 18 19 20 21 22 23 0 1 2 3 4 5 6 7

ISSUE DATE: 09/07/01 - 14:56

PDT: 0 1 2 3 4 5 6 7 8 9 10 11 12 13 14 15 16 17 18 19 20 21 22 23 0

FRIDAY
SEPTEMBER 21, 2001
264-265

UTC: 7 8 9 10 11 12 13 14 15 16 17 18 19 20 21 22 23 0 1 2 3 4 5 6 7

RTLTL : 22h 53m 58s
VOYAGER 1
FDSL : 11AF
CCSL : A040
TWNC : ON
SB : OFF XB : LOW
PYR : .05/ .10/ .25
GYROS : OFF

1200 RTLTL=22h 54m 8s | 0000 RTLTL=22h 54m 20s

0828 GS-4B 0829 | 1753 GS-4B 1754 | 0313 GS-4B 0314

FDS MODE	CR-5T	CR-5T	CR-5T	CR-5T
XB DATA RATE (MI)	160(32)	160(32)	160(32)	160(32)

31 |----- 1955 |----- 25 [D] |----- 0540

DSN COVERAGE HPTXR

32 |----- 34 [o] |----- 1705 |----- 0235 |----- 43 [o]

HPTXR

RTLTL : 17h 57m 54s
VOYAGER 2
FDSL : 11AF
CCSL : B113
TWNC : ON
SB : OFF XB : LOW
PYR : .05 / .10 / .25
GYROS : OFF

1200 RTLTL=17h 58m 6s | 0000 RTLTL=17h 58m 16s

FDS MODE	CR-5T
XB DATA RATE (MI)	160(32)

VOYAGER COVERAGE |----- ON CALL |-----

NOTES

[1] S/C 31=GS-4B @ 0828 XB=2.8K(41) NOT RECOVERABLE
[2] S/C 31=GS-4B @ 1753 XB=2.8K(41) NOT RECOVERABLE
[3] S/C 31=GS-4B @ 0313 XB=2.8K(41) NOT RECOVERABLE

UTC: 7 8 9 10 11 12 13 14 15 16 17 18 19 20 21 22 23 0 1 2 3 4 5 6 7

ISSUE DATE: 09/07/01 - 14:56

PDT: 0 1 2 3 4 5 6 7 8 9 10 11 12 13 14 15 16 17 18 19 20 21 22 23 0

SATURDAY
SEPTEMBER 22, 2001
265-266

UTC: 7 8 9 10 11 12 13 14 15 16 17 18 19 20 21 22 23 0 1 2 3 4 5 6 7

RTLTL : 22h 54m 20s

1200 RTLTL=22h 54m 32s

0000 RTLTL=22h 54m 44s

VOYAGER 1

FDSL : 11AF

CCSL : A040
TWNC : ON
SB : OFF XB : LOW
PYR : .05/ .10/ .25
GYROS : OFF

1233
GS-4B 1234

2153
GS-4B 2154

FDS MODE	CR-5T	CR-5T	CR-5T
XB DATA RATE (MI)	160(32)	160(32)	160(32)

31 1940 |-----15 [D]-----| 0550

DSN COVERAGE HPTXR

32 -----43 [o]-----| 1320 0235 |-----43 [o]-----

HPTXR

RTLTL : 17h 58m 16s

1200 RTLTL=17h 58m 28s

0000 RTLTL=17h 58m 40s

VOYAGER 2

FDSL : 11AF

CCSL : B113
TWNC : ON
SB : OFF XB : LOW
PYR : .05/ .10/ .25
GYROS : OFF

1313 | 1326 TAPPOS

1823 | 1824 TAPPOS

1615
GS-4B 1616

FDS MODE	CR-5T	CR-5T
XB DATA RATE (MI)	160(32)	160(32)

VOYAGER COVERAGE -----ON CALL-----

NOTES

- [1] S/C 31=GS-4B @ 1233 XB=2.8K(41) NOT RECOVERABLE
- [2] S/C 32=GS-4B @ 1615 XB=2.8K(41) NOT RECOVERABLE
- [3] S/C 31=GS-4B @ 2153 XB=2.8K(41) NOT RECOVERABLE

UTC: 7 8 9 10 11 12 13 14 15 16 17 18 19 20 21 22 23 0 1 2 3 4 5 6 7

ISSUE DATE: 09/07/01 - 14:56

PDT: 0 1 2 3 4 5 6 7 8 9 10 11 12 13 14 15 16 17 18 19 20 21 22 23 0

SUNDAY
 SEPTEMBER 23, 2001
 266-267

UTC: 7 8 9 10 11 12 13 14 15 16 17 18 19 20 21 22 23 0 1 2 3 4 5 6 7

RTLT : 22h 54m 44s
 VOYAGER 1
 FDSL : 11AF
 CCSL : A040
 TWNC : ON
 SB : OFF XB : LOW
 PYR : .05/ .10/ .25
 GYROS : OFF

1200 RTLT=22h 54m 54s
 0000 RTLT=22h 55m 6s

0713 GS-4B 0714
 1633 GS-4B 1634
 0157 GS-4B 0158

FDS MODE	CR-5T	CR-5T	CR-5T
XB DATA RATE (MI)	160(32)	160(32)	160(32)

31 2005 |----- 24 [D] -----| 0045

DSN COVERAGE HPTXR

32	----- 43 [o] ----- 1310	0235 ----- 43 [D] -----
----	--------------------------	--------------------------

HPTXR

RTLT : 17h 58m 40s
 VOYAGER 2
 FDSL : 11AF
 CCSL : B113
 TWNC : ON
 SB : OFF XB : LOW
 PYR : .05 / .10 / .25
 GYROS : OFF

1200 RTLT=17h 58m 52s
 0000 RTLT=17h 59m 2s

FDS MODE	CR-5T
XB DATA RATE (MI)	160(32)

VOYAGER COVERAGE ----- ON CALL -----

NOTES

[1] S/C 31=CR-5T @ 2154-0713 XB=160(32)
 [2] S/C 31=GS-4B @ 0713 XB=2.8K(41) NOT RECOVERABLE
 [4] S/C 31=GS-4B @ 1633 XB=2.8K(41) NOT RECOVERABLE
 [4] S/C 31=GS-4B @ 0157 XB=2.8K(41) NOT RECOVERABLE

UTC: 7 8 9 10 11 12 13 14 15 16 17 18 19 20 21 22 23 0 1 2 3 4 5 6 7