

ISSUE DATE: 09/13/01 - 12:45

PDT: 0 1 2 3 4 5 6 7 8 9 10 11 12 13 14 15 16 17 18 19 20 21 22 23 0

THURSDAY
SEPTEMBER 13, 2001
256-257

UTC: 7 8 9 10 11 12 13 14 15 16 17 18 19 20 21 22 23 0 1 2 3 4 5 6 7

RTLT : 22h 50m 50s

1200 RTLT=22h 51m 2s

0000 RTLT=22h 51m 12s

VOYAGER 1

FDSL : 11AF

D/L | 0748

CCSL : A040
TWNC : ON
SB : OFF XB : HIGH
PYR : .05/ .10/ .25
GYROS : AB ON

S/C 31 STATUS

FDS CLOCK DRIFT:
ADD TO S/C EVENT
ERT: -22.107 sec

ROLLREF = RIGIL
KENTAURUS

FDS MODE
XB DATA RATE (MI)

CR-5T

160 (32)

31 ----- 34 [D] ----- | 1020

0315 - 0615 | ----- 15 [D] ----- |

DSN COVERAGE HPTXR

32

1105 | ----- 34 [D] ----- | 1750

45 [D] 0650 |

HPTXR

RTLT : 17h 54m 52s

1200 RTLT=17h 55m 4s

2001 | ----- COMMAND MORATORIUM -----

VOYAGER 2

FDSL : 11AF

CCSL : B113
TWNC : ON
SB : OFF XB : HIGH
PYR : .05/ .10/ .25
GYROS : BC ON

S/C 32 STATUS

FDS CLOCK DRIFT:
ADD TO S/C EVENT
ERT: -82.562 sec

ROLLREF = VEGA

FDS MODE
XB DATA RATE (MI)

CR-5T

160 (32)

VOYAGER COVERAGE

----- ON CALL ----- +

VGR ↑

NOTES

UTC: 7 8 9 10 11 12 13 14 15 16 17 18 19 20 21 22 23 0 1 2 3 4 5 6 7

ISSUE DATE: 09/13/01 - 12:45

PDT: 0 1 2 3 4 5 6 7 8 9 10 11 12 13 14 15 16 17 18 19 20 21 22 23 0

FRIDAY
SEPTEMBER 14, 2001
257-258

UTC: 7 8 9 10 11 12 13 14 15 16 17 18 19 20 21 22 23 0 1 2 3 4 5 6 7

RTLT : 22h 51m 12s
 VOYAGER 1
 FDSL : 11AF
 CCSL : A040
 TWNC : ON
 SB : OFF XB : HIGH
 PYR : .05/ .10/ .25
 GYROS : AB ON

FDS MODE CR-5T
 XB DATA RATE (MI) 160 (32)

1200 RTLT=22h 51m 24s 0000 RTLT=22h 51m 36s

31 0450 --- 34 [D] ---

DSN COVERAGE HPTXR

32 ----- 45 [D] ----- | 1450

HPTXR

RTLT : 17h 55m 14s
 VOYAGER 2
 FDSL : 11AF
 CCSL : B113
 TWNC : ON
 SB : OFF XB : HIGH
 PYR : .05/ .10/ .25
 GYROS : BC ON

FDS MODE CR-5T
 XB DATA RATE (MI) 160 (32)

1200 RTLT=17h 55m 26s 0000 RTLT=17h 55m 38s

COMMAND MORATORIUM

↓ 0728 AAI
 |----- MAGROL -----| 0731 - 1327
 ↓ 1320 RAI
 ↓ 1327 CRU
 ↓ 1327 GYROS OFF

VOYAGER COVERAGE

----- VGR ----- | ----- ON CALL -----

NOTES [1] S/C 32 - D/L AGC VARIATIONS EXPECTED DURING MAGROL (0731-1327)

UTC: 7 8 9 10 11 12 13 14 15 16 17 18 19 20 21 22 23 0 1 2 3 4 5 6 7

ISSUE DATE: 09/13/01 - 12:45

PDT: 0 1 2 3 4 5 6 7 8 9 10 11 12 13 14 15 16 17 18 19 20 21 22 23 0

SATURDAY
SEPTEMBER 15, 2001
258-259

UTC: 7 8 9 10 11 12 13 14 15 16 17 18 19 20 21 22 23 0 1 2 3 4 5 6 7

RTLT : 22h 51m 36s
 VOYAGER 1
 FDSL : 11AF
 CCSL : A040
 TWNC : ON
 SB : OFF XB : HIGH
 PYR : .05/ .10/ .25
 GYROS : AB ON

1200 RTLT=22h 51m 48s
 0000 RTLT=22h 52m 0s

↓ 2201 GYRO INIT

FDS MODE CR-5T
 XB DATA RATE (MI) 160 (32)

31 --- 34 [D] --- | 0905
 2020 |----- 25 [D] -----| 0550

DSN COVERAGE HPTXR
 32 1005 |----- 34 [o] -----| 1730
 0535 | 34 [D] |

HPTXR

RTLT : 17h 55m 38s
 VOYAGER 2
 FDSL : 11AF
 CCSL : B113
 TWNC : ON
 SB : OFF XB : HIGH
 PYR : .05/ .10/ .25
 GYROS : OFF

1200 RTLT=17h 55m 48s
 0000 RTLT=17h 56m 0s

COMMAND MORATORIUM -----| 1931

1336 | | 1349 TAPPOS
 1845 | 1846 TAPPOS

1637 GS-4B
 1638

FDS MODE CR-5T
 XB DATA RATE (MI) 160 (32)

VOYAGER COVERAGE ----- ON CALL -----

NOTES [1] S/C 32=GS-4B @ 1637 XB=2.8K(41) NOT RECOVERABLE

UTC: 7 8 9 10 11 12 13 14 15 16 17 18 19 20 21 22 23 0 1 2 3 4 5 6 7

ISSUE DATE: 09/13/01 - 12:45

PDT: 0 1 2 3 4 5 6 7 8 9 10 11 12 13 14 15 16 17 18 19 20 21 22 23 0

SUNDAY
SEPTEMBER 16, 2001
259-260

UTC: 7 8 9 10 11 12 13 14 15 16 17 18 19 20 21 22 23 0 1 2 3 4 5 6 7

RTLT : 22h 52m 0s
 VOYAGER 1
 FDSL : 11AF
 CCSL : A040
 TWNC : ON
 SB : OFF XB : HIGH
 PYR : .05/ .10/ .25
 GYROS : AB ON

FDS MODE CR-5T
 XB DATA RATE (MI) 160 (32)

1200 RTLT=22h 52m 12s 0000 RTLT=22h 52m 24s

31
 DSN COVERAGE HPTXR
 32
 HPTXR

2015 |-----25 [D]-----| 0600
 -----34 [D]-----| 1740

RTLT : 17h 56m 0s
 VOYAGER 2
 FDSL : 11AF
 CCSL : B113
 TWNC : ON
 SB : OFF XB : HIGH
 PYR : .05/ .10/ .25
 GYROS : OFF

FDS MODE CR-5T
 XB DATA RATE (MI) 160(32)

VOYAGER COVERAGE -----ON CALL-----

1200 RTLT=17h 56m 12s 0000 RTLT=17h 56m 22s

NOTES

UTC: 7 8 9 10 11 12 13 14 15 16 17 18 19 20 21 22 23 0 1 2 3 4 5 6 7

ISSUE DATE: 09/13/01 - 12:45

PDT: 0 1 2 3 4 5 6 7 8 9 10 11 12 13 14 15 16 17 18 19 20 21 22 23 0

MONDAY
SEPTEMBER 17, 2001
260-261

WK38

UTC: 7 8 9 10 11 12 13 14 15 16 17 18 19 20 21 22 23 0 1 2 3 4 5 6 7

RTLT : 22h 52m 24s

1200 RTLT=22h 52m 36s

0000 RTLT=22h 52m 48s

VOYAGER 1

FDSL : 11AF

↓ 2200 MEMUPD - ENA AHELIO

CCSL : A040
TWNC : ON
SB : OFF XB : HIGH
PYR : .05/ .10/ .25
GYROS : AB ON

FDS MODE
XB DATA RATE (MI)

CR-5T

160 (32)

31

2010 |----- 25 [D] -----| 0545

DSN COVERAGE
HPTXR

32

1230 |----- 34 [D] -----| 1720

34 [D] 0625 |-----

HPTXR

RTLT : 17h 56m 22s

1200 RTLT=17h 56m 34s

0000 RTLT=17h 56m 46s

VOYAGER 2

FDSL : 11AF

CCSL : B113
TWNC : ON
SB : OFF XB : HIGH
PYR : .05/ .10/ .25
GYROS : OFF

FDS MODE
XB DATA RATE (MI)

CR-5T

160(32)

VOYAGER COVERAGE

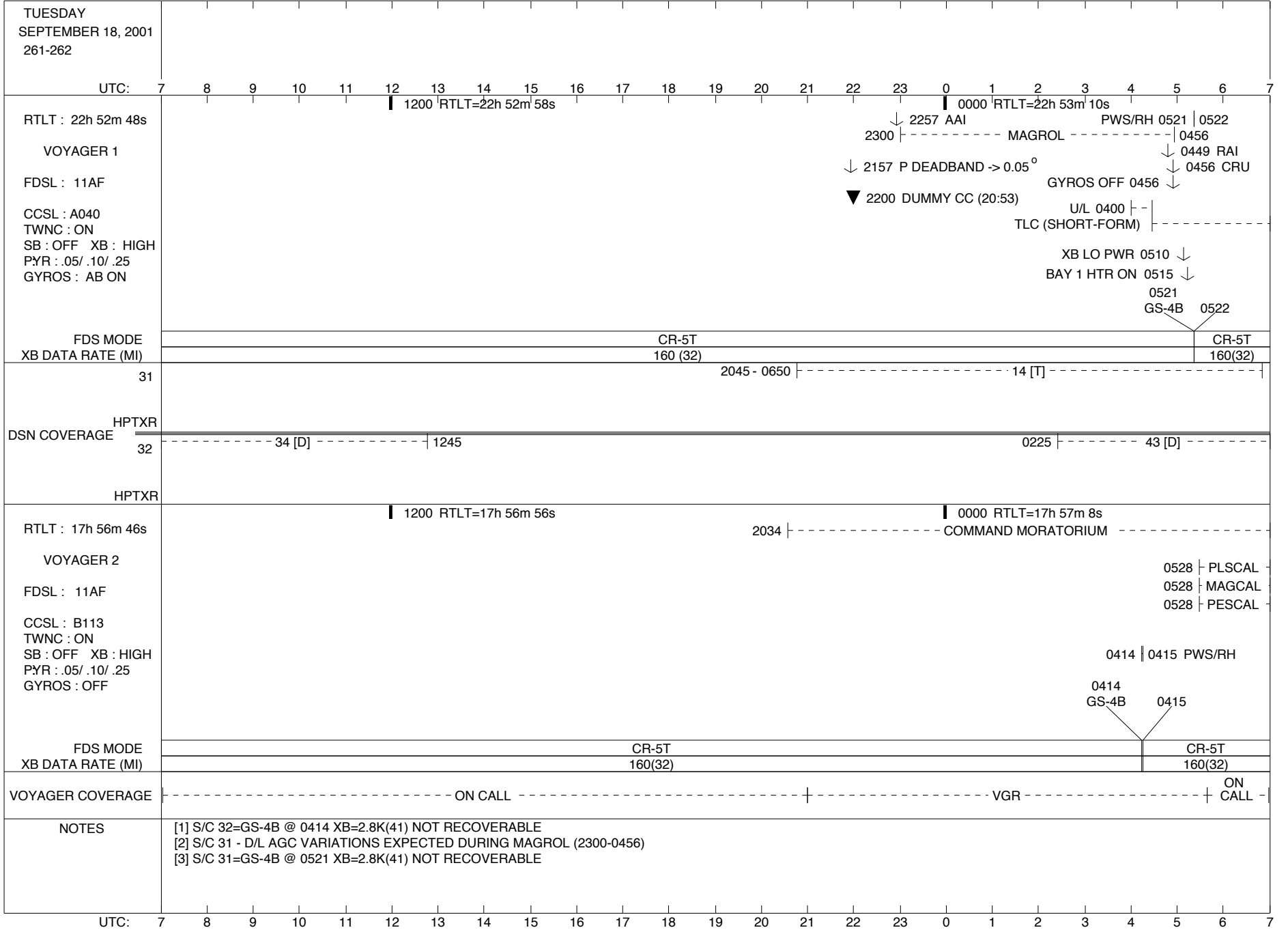
----- ON CALL -----

NOTES

UTC: 7 8 9 10 11 12 13 14 15 16 17 18 19 20 21 22 23 0 1 2 3 4 5 6 7

ISSUE DATE: 09/13/01 - 12:45

PDT: 0 1 2 3 4 5 6 7 8 9 10 11 12 13 14 15 16 17 18 19 20 21 22 23 0



ISSUE DATE: 09/13/01 - 12:45

PDT: 0 1 2 3 4 5 6 7 8 9 10 11 12 13 14 15 16 17 18 19 20 21 22 23 0

WEDNESDAY
SEPTEMBER 19, 2001
262-263

UTC: 7 8 9 10 11 12 13 14 15 16 17 18 19 20 21 22 23 0 1 2 3 4 5 6 7

RTLT : 22h 53m 10s

1200 RTLT=22h 53m 22s

0000 RTLT=22h 53m 34s

VOYAGER 1

FDSL : 11AF

1603 | TAPPOS | 1726

CCSL : A040
TWNC : ON
SB : OFF XB : LOW
PYR : .05/ .10/ .25
GYROS : OFF

TLC (SHORT-FORM)

D/L - | 0421

1908
GS-4B 1909

0428
GS-4B 0429

FDS MODE
XB DATA RATE (MI)

CR-5T

160(32)

CR-5T

160(32)

CR-5T

160(32)

31

2025 |-----| 25 [D] -----| 0530

DSN COVERAGE
HPTXR

32

43 [D] -----| 1325

1350 | 45 [D] | 1450

HPTXR

RTLT : 17h 57m 8s

1200 RTLT=17h 57m 20s

0000 RTLT=17h 57m 30s

VOYAGER 2

FDSL : 11AF

COMMAND MORATORIUM

| 0710 PLSCAL

↓ 1401 X/B LOW POWER

MAGCAL | 0830

PESCAL - | 0848

↓ 1405 BAY 1 HTR ON

CCSL : B113
TWNC : ON
SB : OFF XB : HIGH
PYR : .05/ .10/ .25
GYROS : OFF

FDS MODE
XB DATA RATE (MI)

CR-5T

160(32)

VOYAGER COVERAGE

----- ON CALL -----

|--- VGR ---|

----- ON CALL -----

NOTES

- [1] S/C 31=GS-4B @ 1908 XB=2.8K(41) NOT RECOVERABLE
- [2] S/C 31=GS-4B @ 0428 XB=2.8K(41) NOT RECOVERABLE

UTC: 7 8 9 10 11 12 13 14 15 16 17 18 19 20 21 22 23 0 1 2 3 4 5 6 7

ISSUE DATE: 09/13/01 - 12:45

PDT: 0 1 2 3 4 5 6 7 8 9 10 11 12 13 14 15 16 17 18 19 20 21 22 23 0

THURSDAY
SEPTEMBER 20, 2001
263-264

UTC: 7 8 9 10 11 12 13 14 15 16 17 18 19 20 21 22 23 0 1 2 3 4 5 6 7

RTLT : 22h 53m 34s

1200 RTLT=22h 53m 46s | 0000 RTLT=22h 53m 58s

VOYAGER 1

FDSL : 11AF

CCSL : A040
TWNC : ON
SB : OFF XB : LOW
PYR : .05/ .10/ .25
GYROS : OFF

1348
GS-4B 1349

2308
GS-4B 2309

FDS MODE	CR-5T	CR-5T	CR-5T
XB DATA RATE (MI)	160(32)	160(32)	160(32)

31 2330 |----- 15 [D] -----| 0545

DSN COVERAGE HPTXR

32 0815 |----- 43 [o] -----| 1420 34 [o] 0615 |-----

HPTXR

RTLT : 17h 57m 30s |----- 1200 RTLT=17h 57m 42s |----- COMMAND MORATORIUM |----- 2008 |----- 0000 RTLT=17h 57m 54s

VOYAGER 2

FDSL : 11AF

CCSL : B113
TWNC : ON
SB : OFF XB : LOW
PYR : .05/ .10/ .25
GYROS : OFF

FDS MODE	CR-5T
XB DATA RATE (MI)	160(32)

VOYAGER COVERAGE |----- ON CALL -----|

NOTES

- [1] S/C 31=GS-4B @ 1348 XB=2.8K(41) NOT RECOVERABLE
- [2] S/C 31=GS-4B @ 2308 XB=2.8K(41) NOT RECOVERABLE

UTC: 7 8 9 10 11 12 13 14 15 16 17 18 19 20 21 22 23 0 1 2 3 4 5 6 7

ISSUE DATE: 09/13/01 - 12:45

PDT: 0 1 2 3 4 5 6 7 8 9 10 11 12 13 14 15 16 17 18 19 20 21 22 23 0

FRIDAY
SEPTEMBER 21, 2001
264-265

UTC: 7 8 9 10 11 12 13 14 15 16 17 18 19 20 21 22 23 0 1 2 3 4 5 6 7

RTLTL : 22h 53m 58s

1200 RTLTL=22h 54m 8s

0000 RTLTL=22h 54m 20s

VOYAGER 1

FDSL : 11AF

CCSL : A040
TWNC : ON
SB : OFF XB : LOW
PYR : .05/ .10/ .25
GYROS : OFF

0828
GS-4B 0829

1753
GS-4B 1754

0313
GS-4B 0314

FDS MODE
XB DATA RATE (MI)

CR-5T
160(32)

CR-5T
160(32)

CR-5T
160(32)

CR-5T
160(32)

31

1955

25 [D]

0540

DSN COVERAGE
HPTXR

32

34 [o]

1705

0235

43 [o]

HPTXR

RTLTL : 17h 57m 54s

1200 RTLTL=17h 58m 6s

0000 RTLTL=17h 58m 16s

VOYAGER 2

FDSL : 11AF

CCSL : B113
TWNC : ON
SB : OFF XB : LOW
PYR : .05/ .10/ .25
GYROS : OFF

FDS MODE
XB DATA RATE (MI)

CR-5T
160(32)

VOYAGER COVERAGE

ON CALL

NOTES

- [1] S/C 31=GS-4B @ 0828 XB=2.8K(41) NOT RECOVERABLE
- [2] S/C 31=GS-4B @ 1753 XB=2.8K(41) NOT RECOVERABLE
- [3] S/C 31=GS-4B @ 0313 XB=2.8K(41) NOT RECOVERABLE

UTC: 7 8 9 10 11 12 13 14 15 16 17 18 19 20 21 22 23 0 1 2 3 4 5 6 7

ISSUE DATE: 09/13/01 - 12:45

PDT: 0 1 2 3 4 5 6 7 8 9 10 11 12 13 14 15 16 17 18 19 20 21 22 23 0

SATURDAY
SEPTEMBER 22, 2001
265-266

UTC: 7 8 9 10 11 12 13 14 15 16 17 18 19 20 21 22 23 0 1 2 3 4 5 6 7

RTLTL : 22h 54m 20s

1200 | RTLTL=22h 54m 32s

0000 | RTLTL=22h 54m 44s

VOYAGER 1

FDSL : 11AF

CCSL : A040
TWNC : ON
SB : OFF XB : LOW
PYR : .05/ .10/ .25
GYROS : OFF

1233
GS-4B

1234

2153
GS-4B

2154

FDS MODE
XB DATA RATE (MI)

CR-5T

160(32)

CR-5T

160(32)

CR-5T

160(32)

31

1940 |-----15 [D]-----| 0550

DSN COVERAGE
HPTXR

32

43 [o] |-----| 1320

0235 |-----43 [o]-----|

HPTXR

RTLTL : 17h 58m 16s

1200 | RTLTL=17h 58m 28s

0000 | RTLTL=17h 58m 40s

VOYAGER 2

FDSL : 11AF

CCSL : B113
TWNC : ON
SB : OFF XB : LOW
PYR : .05/ .10/ .25
GYROS : OFF

1313 | | 1326 TAPPOS

1823 | 1824 TAPPOS

1615
GS-4B

1616

FDS MODE
XB DATA RATE (MI)

CR-5T

160(32)

CR-5T

160(32)

VOYAGER COVERAGE

----- ON CALL -----

NOTES

- [1] S/C 31=GS-4B @ 1233 XB=2.8K(41) NOT RECOVERABLE
- [2] S/C 32=GS-4B @ 1615 XB=2.8K(41) NOT RECOVERABLE
- [3] S/C 31=GS-4B @ 2153 XB=2.8K(41) NOT RECOVERABLE

UTC: 7 8 9 10 11 12 13 14 15 16 17 18 19 20 21 22 23 0 1 2 3 4 5 6 7

ISSUE DATE: 09/13/01 - 12:45

PDT: 0 1 2 3 4 5 6 7 8 9 10 11 12 13 14 15 16 17 18 19 20 21 22 23 0

SUNDAY
SEPTEMBER 23, 2001
266-267

UTC: 7 8 9 10 11 12 13 14 15 16 17 18 19 20 21 22 23 0 1 2 3 4 5 6 7

RTLT : 22h 54m 44s
VOYAGER 1
FDSL : 11AF
CCSL : A040
TWNC : ON
SB : OFF XB : LOW
PYR : .05/ .10/ .25
GYROS : OFF

1200 RTLT=22h 54m 54s | 0000 RTLT=22h 55m 6s

0713 GS-4B | 0714 | 1633 GS-4B | 1634 | 0157 GS-4B | 0158 PWS/RH

FDS MODE	CR-5T	CR-5T	CR-5T
XB DATA RATE (MI)	160(32)	160(32)	160(32)

31
DSN COVERAGE HPTXR
2005 | ----- 24 [D] ----- | 0045

32
HPTXR
----- 43 [o] ----- | 1310 | 0235 | ----- 43 [D] -----

RTLT : 17h 58m 40s
VOYAGER 2
FDSL : 11AF
CCSL : B113
TWNC : ON
SB : OFF XB : LOW
PYR : .05/ .10/ .25
GYROS : OFF

1200 RTLT=17h 58m 52s | 0000 RTLT=17h 59m 2s

FDS MODE	CR-5T
XB DATA RATE (MI)	160(32)

VOYAGER COVERAGE ----- ON CALL -----

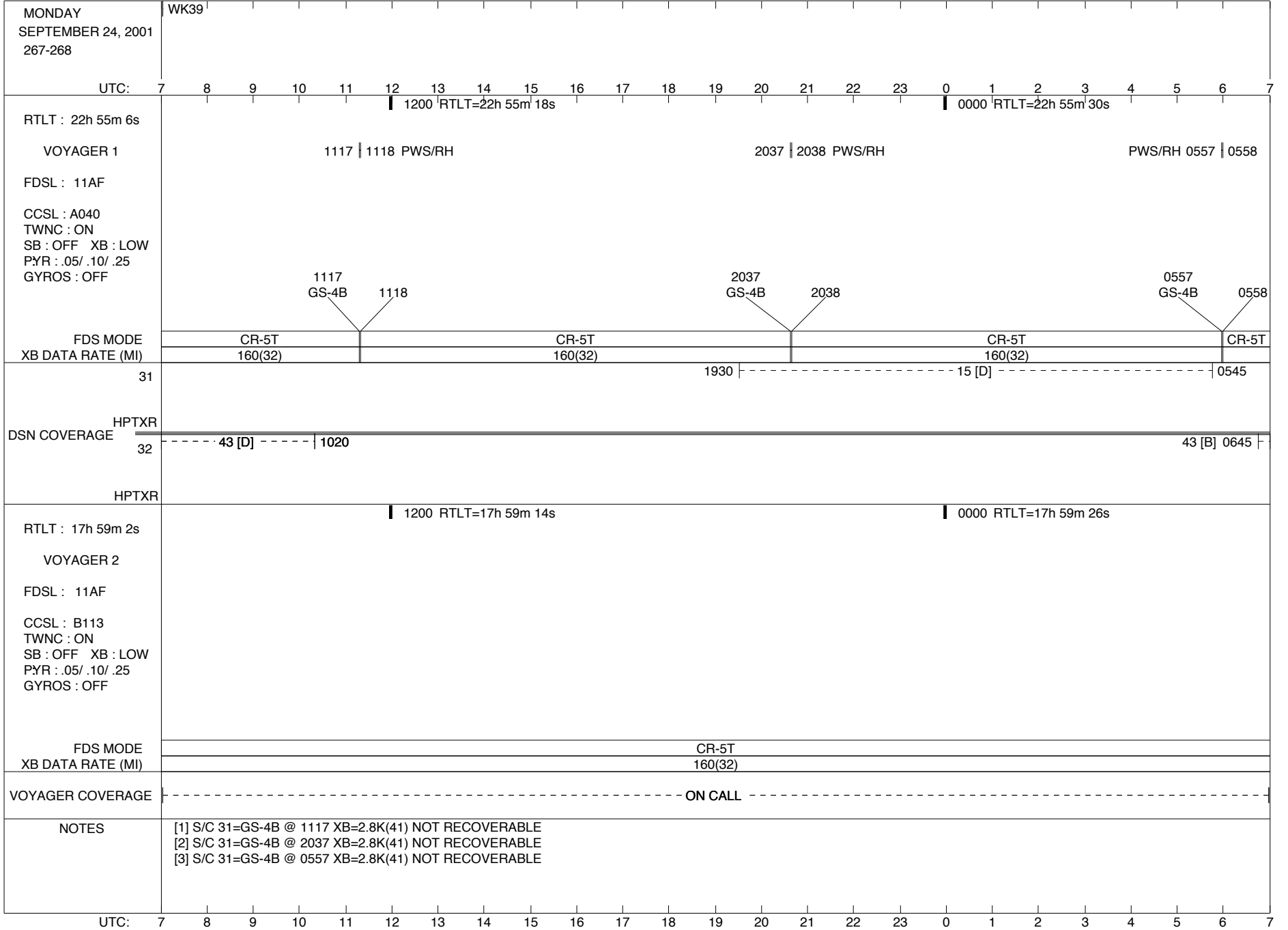
NOTES

- [1] S/C 31=CR-5T @ 2154-0713 XB=160(32)
- [2] S/C 31=GS-4B @ 0713 XB=2.8K(41) NOT RECOVERABLE
- [3] S/C 31=GS-4B @ 1633 XB=2.8K(41) NOT RECOVERABLE
- [4] S/C 31=GS-4B @ 0157 XB=2.8K(41) NOT RECOVERABLE

UTC: 7 8 9 10 11 12 13 14 15 16 17 18 19 20 21 22 23 0 1 2 3 4 5 6 7

ISSUE DATE: 09/13/01 - 12:45

PDT: 0 1 2 3 4 5 6 7 8 9 10 11 12 13 14 15 16 17 18 19 20 21 22 23 0



ISSUE DATE: 09/13/01 - 12:45

PDT: 0 1 2 3 4 5 6 7 8 9 10 11 12 13 14 15 16 17 18 19 20 21 22 23 0

TUESDAY
SEPTEMBER 25, 2001
268-269

UTC: 7 8 9 10 11 12 13 14 15 16 17 18 19 20 21 22 23 0 1 2 3 4 5 6 7

RTLT : 22h 55m 30s

1200 RTLT=22h 55m 40s

0000 RTLT=22h 55m 52s

VOYAGER 1

1517 | 1518 PWS/RH

PWS/RH 0458 | 0459

FDSL : 11AF

1520 | 1520 TAPPOS

CCSL : A040
TWNC : ON
SB : OFF XB : LOW
PYR : .05/ .10/ .25
GYROS : OFF

1517
GS-4B 1518

0458
GS-4B 0459

FDS MODE
XB DATA RATE (MI)

CR-5T
160(32)

CR-5T
160(32)

CR-5T
160(32)

31

2115 | ----- 15 [D] ----- | 0045

DSN COVERAGE
HPTXR

32

----- 43 [B] ----- | 1645

HPTXR

RTLT : 17h 59m 26s

1200 RTLT=17h 59m 38s

0000 RTLT=17h 59m 50s

VOYAGER 2

0351 | 0352 PWS/RH

FDSL : 11AF

▼ 1602 DUMMY CC (5 MIN BRACKETED - 10:02)

CCSL : B113
TWNC : ON
SB : OFF XB : LOW
PYR : .05/ .10/ .25
GYROS : OFF

0351
GS-4B 0352

FDS MODE
XB DATA RATE (MI)

CR-5T
160(32)

CR-5T
160(32)

VOYAGER COVERAGE

----- ON CALL ----- | -- VGR -- | ----- ON CALL -----

NOTES

- [1] S/C 31=GS-4B @ 1517 XB=2.8K(41) NOT RECOVERABLE
- [2] S/C 32=GS-4B @ 0351 XB=2.8K(41) NOT RECOVERABLE
- [3] S/C 31=GS-4B @ 0458 XB=2.8K(41) NOT RECOVERABLE

UTC: 7 8 9 10 11 12 13 14 15 16 17 18 19 20 21 22 23 0 1 2 3 4 5 6 7

ISSUE DATE: 09/13/01 - 12:45

PDT: 0 1 2 3 4 5 6 7 8 9 10 11 12 13 14 15 16 17 18 19 20 21 22 23 0

WEDNESDAY SEPTEMBER 26, 2001 269-270	
UTC: 7 8 9 10 11 12 13 14 15 16 17 18 19 20 21 22 23 0 1 2 3 4 5 6 7	
RTLTL : 22h 55m 52s VOYAGER 1 FDSL : 11AF CCSL : A040 TWNC : ON SB : OFF XB : LOW PYR : .05/ .10/ .25 GYROS : OFF	1200 RTLTL=22h 56m 4s 1845 1846 PWS/RH 1540 1540 TAPPOS U/L 0300 - TLC (SHORT-FORM) - ▼ 2300 DUMMY CC (NO D/L)
FDS MODE XB DATA RATE (MI)	CR-5T 160(32)
31	2225 ----- 14 [T] ----- 0410
DSN COVERAGE HPTXR	32 0930 ----- 34 [D] ----- 1700 43 [B] 0645
HPTXR	1200 RTLTL=18h 0m 2s 0000 RTLTL=18h 0m 12s
RTLTL : 17h 59m 50s VOYAGER 2 FDSL : 11AF CCSL : B113 TWNC : ON SB : OFF XB : LOW PYR : .05/ .10/ .25 GYROS : OFF	CR-5T 160(32)
FDS MODE XB DATA RATE (MI)	CR-5T 160(32)
VOYAGER COVERAGE	----- ON CALL ----- - VGR - ----- ON CALL -----
NOTES	[1] S/C 31=GS-4B @ 1845 XB=2.8K(41) NOT RECOVERABLE [2] S/C 31=GS-4B @ 0406 XB=2.8K(41) NOT RECOVERABLE
UTC: 7 8 9 10 11 12 13 14 15 16 17 18 19 20 21 22 23 0 1 2 3 4 5 6 7	

ISSUE DATE: 09/13/01 - 12:45

PDT: 0 1 2 3 4 5 6 7 8 9 10 11 12 13 14 15 16 17 18 19 20 21 22 23 0

THURSDAY
SEPTEMBER 27, 2001
270-271

UTC: 7 8 9 10 11 12 13 14 15 16 17 18 19 20 21 22 23 0 1 2 3 4 5 6 7

RTLTL : 22h 56m 16s
VOYAGER 1
FDSL : 11AF
CCSL : A040
TWNC : ON
SB : OFF XB : LOW
PYR : .05/ .10/ .25
GYROS : OFF

1200 RTLTL=22h 56m 26s
0000 RTLTL=22h 56m 38s

1326 | 1326 PWS/RH
2246 | 2247 PWS/RH

----- TLC (SHORT-FORM) ----- | D/L - | 0324

1326 GS-4B 1326 2246 GS-4B 2247

FDS MODE	CR-5T	CR-5T	CR-5T
XB DATA RATE (MI)	160(32)	160(32)	160(32)

31
DSN COVERAGE HPTXR
1215 | - 65 [D] - - | 1405
2330 | - - - - - 15 [D] - - - - - | 0530

32
HPTXR
----- 43 [B] ----- | 1640

RTLTL : 18h 0m 12s
VOYAGER 2
FDSL : 11AF
CCSL : B113
TWNC : ON
SB : OFF XB : LOW
PYR : .05/ .10/ .25
GYROS : OFF

1200 RTLTL=18h 0m 24s
0000 RTLTL=18h 0m 36s

▽ 1602 DUMMY CC (5 MIN BRACKETED - 10:03)

FDS MODE	CR-5T
XB DATA RATE (MI)	160(32)

VOYAGER COVERAGE ----- ON CALL -----

NOTES
[1] S/C 31=GS-4B @ 1326 XB=2.8K(41) NOT RECOVERABLE
[2] S/C 31=GS-4B @ 2246 XB=2.8K(41) NOT RECOVERABLE

UTC: 7 8 9 10 11 12 13 14 15 16 17 18 19 20 21 22 23 0 1 2 3 4 5 6 7

ISSUE DATE: 09/13/01 - 12:45

PDT: 0 1 2 3 4 5 6 7 8 9 10 11 12 13 14 15 16 17 18 19 20 21 22 23 0

FRIDAY
SEPTEMBER 28, 2001
271-272

UTC: 7 8 9 10 11 12 13 14 15 16 17 18 19 20 21 22 23 0 1 2 3 4 5 6 7

RTLT : 22h 56m 38s
 VOYAGER 1
 FDSL : 11AF
 CCSL : A040
 TWNC : ON
 SB : OFF XB : LOW
 PYR : .05/ .10/ .25
 GYROS : OFF

1200 RTLT=22h 56m 50s | 0000 RTLT=22h 57m 0s

0806 | 0807 PWS/RH | 1730 | 1731 PWS/RH | 0250 | 0251 PWS/RH

0806 GS-4B | 0807 | 1730 GS-4B | 1731 | 0250 GS-4B | 0251

FDS MODE	CR-5T	CR-5T	CR-5T	CR-5T
XB DATA RATE (MI)	160(32)	160(32)	160(32)	160(32)

31 1155 | 65 [D] | 1405 | 1915 | 15 [D] | 2110

DSN COVERAGE HPTXR

32 0800 | 34 [D] | 1650 | 0135 | 43 [o]

HPTXR

RTLT : 18h 0m 36s
 VOYAGER 2
 FDSL : 11AF
 CCSL : B113
 TWNC : ON
 SB : OFF XB : LOW
 PYR : .05/ .10/ .25
 GYROS : OFF

1200 RTLT=18h 0m 48s | 0000 RTLT=18h 1m 0s

FDS MODE	CR-5T
XB DATA RATE (MI)	160(32)

VOYAGER COVERAGE ----- ON CALL -----

NOTES

[1] S/C 31=GS-4B @ 0806 XB=2.8K(41) NOT RECOVERABLE
 [2] S/C 31=GS-4B @ 1730 XB=2.8K(41) NOT RECOVERABLE
 [3] S/C 31=GS-4B @ 0250 XB=2.8K(41) NOT RECOVERABLE

UTC: 7 8 9 10 11 12 13 14 15 16 17 18 19 20 21 22 23 0 1 2 3 4 5 6 7

ISSUE DATE: 09/13/01 - 12:45

PDT: 0 1 2 3 4 5 6 7 8 9 10 11 12 13 14 15 16 17 18 19 20 21 22 23 0

SATURDAY
SEPTEMBER 29, 2001
272-273

UTC: 7 8 9 10 11 12 13 14 15 16 17 18 19 20 21 22 23 0 1 2 3 4 5 6 7

RTLTL : 22h 57m 0s

1200 RTLTL=22h 57m 12s | 0000 RTLTL=22h 57m 22s

VOYAGER 1

1210 | 1211 PWS/RH

2130 | 2131 PWS/RH

PWS/RH 0650 - 0651

FDSL : 11AF

CCSL : A040
TWNC : ON
SB : OFF XB : LOW
PYR : .05/ .10/ .25
GYROS : OFF

1210 GS-4B
1211

2130 GS-4B
2131

0650 GS-4B
0651 CR-5T

FDS MODE
XB DATA RATE (MI)

CR-5T
160(32)

CR-5T
160(32)

CR-5T
160(32)

31

1910 |-----15 [D]-----| 0525

DSN COVERAGE
HPTXR

32

-----43 [o]-----| 1030

0225 |-----43 [D]-----

HPTXR

RTLTL : 18h 1m 0s

1200 RTLTL=18h 1m 12s

0000 RTLTL=18h 1m 24s

VOYAGER 2

1251 | 1303 TAPPOS

1800 | 1801 TAPPOS

FDSL : 11AF

CCSL : B113
TWNC : ON
SB : OFF XB : LOW
PYR : .05/ .10/ .25
GYROS : OFF

1552 GS-4B
1553

FDS MODE
XB DATA RATE (MI)

CR-5T
160(32)

CR-5T
160(32)

VOYAGER COVERAGE

-----ON CALL-----

NOTES

- [1] S/C 31=GS-4B @ 1210 XB=2.8K(41) NOT RECOVERABLE
- [2] S/C 32=GS-4B @ 1552 XB=2.8K(41) NOT RECOVERABLE
- [3] S/C 31=GS-4B @ 2130 XB=2.8K(41) NOT RECOVERABLE
- [4] S/C 31=GS-4B @ 0650 XB=2.8K(41) NOT RECOVERABLE
- [5] S/C 31=CR-5T @ 0651 XB=160(32)

UTC: 7 8 9 10 11 12 13 14 15 16 17 18 19 20 21 22 23 0 1 2 3 4 5 6 7

ISSUE DATE: 09/13/01 - 12:45

PDT: 0 1 2 3 4 5 6 7 8 9 10 11 12 13 14 15 16 17 18 19 20 21 22 23 0

SUNDAY
 SEPTEMBER 30, 2001
 273-274

UTC: 7 8 9 10 11 12 13 14 15 16 17 18 19 20 21 22 23 0 1 2 3 4 5 6 7

RTLTL : 22h 57m 22s
 VOYAGER 1
 FDSL : 11AF
 CCSL : A040
 TWNC : ON
 SB : OFF XB : LOW
 PYR : .05/ .10/ .25
 GYROS : OFF

1200 RTLTL=22h 57m 34s
 0000 RTLTL=22h 57m 46s

1610 | 1611 PWS/RH
 0134 | 0135 PWS/RH

1610 GS-4B
 1611
 0134 GS-4B
 0135

FDS MODE	CR-5T	CR-5T	CR-5T
XB DATA RATE (MI)	160(32)	160(32)	160(32)

31
 DSN COVERAGE HPTXR
 32
 HPTXR

1905 |-----15 [D]-----| 0520
 43 [D]-----| 1250
 0110 |-----43 [D]-----|

RTLTL : 18h 1m 24s
 VOYAGER 2
 FDSL : 11AF
 CCSL : B113
 TWNC : ON
 SB : OFF XB : LOW
 PYR : .05/ .10/ .25
 GYROS : OFF

1200 RTLTL=18h 1m 36s
 0000 RTLTL=18h 1m 46s

FDS MODE	CR-5T
XB DATA RATE (MI)	160(32)

VOYAGER COVERAGE
 -----ON CALL-----

NOTES
 [1] S/C 31=GS-4B @ 1610 XB=2.8K(41) NOT RECOVERABLE
 [2] S/C 31=GS-4B @ 0134 XB=2.8K(41) NOT RECOVERABLE

UTC: 7 8 9 10 11 12 13 14 15 16 17 18 19 20 21 22 23 0 1 2 3 4 5 6 7