

ISSUE DATE: 01/23/02 - 07:53

PST: 0 1 2 3 4 5 6 7 8 9 10 11 12 13 14 15 16 17 18 19 20 21 22 23 0

THURSDAY
JANUARY 24, 2002
024-025

UTC: 8 9 10 11 12 13 14 15 16 17 18 19 20 21 22 23 0 1 2 3 4 5 6 7 8

RTLTL : 23h 18m 56s

1200 RTLTL=23h 18m 56s

0000 RTLTL=23h 18m 54s

VOYAGER 1 U/L

TLC (SHORT-FORM)

D/L

FDSL : 11AF

S/C 31 STATUS

FDS CLOCK DRIFT:
ADD TO S/C EVENT
ERT: -23.306 sec

ROLLREF = RIGIL
KENTAURUS

CCSL : A041
TWNC : ON
SB : OFF XB : HIGH
PYR : .05/ .10/ .25
GYROS : OFF

FDS MODE
XB DATA RATE (MI)

CR-5T

160 (32)

31 | 0815 63 [T]

1215 | ----- 25 [D] ----- | 1930

0625 | - 63 [D] -

DSN COVERAGE HPTXR

32

1715 | ----- 45 [D] ----- | 0335

HPTXR

RTLTL : 18h 34m 22s

1200 RTLTL=18h 34m 24s

0000 RTLTL=18h 34m 26s

VOYAGER 2

S/C 32 STATUS

FDS CLOCK DRIFT:
ADD TO S/C EVENT
ERT: -97.891 sec

ROLLREF = VEGA

FDSL : 11AF

CCSL : B114
TWNC : ON
SB : OFF XB : LOW
PYR : .05/ .10/ .25
GYROS : OFF

FDS MODE
XB DATA RATE (MI)

CR-5T

160 (32)

VOYAGER COVERAGE

ON CALL

NOTES

UTC: 8 9 10 11 12 13 14 15 16 17 18 19 20 21 22 23 0 1 2 3 4 5 6 7 8

ISSUE DATE: 01/23/02 - 07:53

PST: 0 1 2 3 4 5 6 7 8 9 10 11 12 13 14 15 16 17 18 19 20 21 22 23 0

FRIDAY
JANUARY 25, 2002
025-026

UTC: 8 9 10 11 12 13 14 15 16 17 18 19 20 21 22 23 0 1 2 3 4 5 6 7 8

RTLT : 23h 18m 54s

1200 RTLT=23h 18m 54s

0000 RTLT=23h 18m 52s

VOYAGER 1

0822 D/L

- ↓ 1239 PITCH=.10
- ↓ 1240 GYROS AB ON
- ↓ 1241 GYRO INIT
- ↓ 1250 GYRO FAULT TEST

0119 TAPPOS 0256 0629 - 0751 TAPPOS

FDSL : 11AF

CCSL : A041
TWNC : ON
SB : OFF XB : HIGH
PYR : .05/ .10/ .25
GYROS : OFF

1344 1350 CCSTIM(B)

0422 0422 PWS/RH

0422 GS-4B 0422

FDS MODE
XB DATA RATE (MI)

CR-5T

160 (32)

CR-5T

160(32)

31 63 [D] 0915

1155 15 [D] 1645

0425 65 [D]

DSN COVERAGE
HPTXR

32

1815 34 [o] 0215

HPTXR

RTLT : 18h 34m 26s

1200 RTLT=18h 34m 28s

0000 RTLT=18h 34m 30s

VOYAGER 2

FDSL : 11AF

CCSL : B114
TWNC : ON
SB : OFF XB : LOW
PYR : .05/ .10/ .25
GYROS : OFF

TAPPOS 0620 0635

FDS MODE
XB DATA RATE (MI)

CR-5T

160 (32)

VOYAGER COVERAGE

----- ON CALL ----- VGR ----- ON CALL -----

NOTES

[1] S/C 31=GS-4B @ 0422 XB=2.8K(41) NOT RECOVERABLE

UTC: 8 9 10 11 12 13 14 15 16 17 18 19 20 21 22 23 0 1 2 3 4 5 6 7 8

ISSUE DATE: 01/23/02 - 07:53

PST: 0 1 2 3 4 5 6 7 8 9 10 11 12 13 14 15 16 17 18 19 20 21 22 23 0

SATURDAY
JANUARY 26, 2002
026-027

UTC: 8 9 10 11 12 13 14 15 16 17 18 19 20 21 22 23 0 1 2 3 4 5 6 7 8

RTLT : 23h 18m 52s

1200 RTLT=23h 18m 52s

0000 RTLT=23h 18m 52s

VOYAGER 1

FDSL : 11AF

CCSL : A041
TWNC : ON
SB : OFF XB : HIGH
PYR : .10 / .10 / .25
GYROS : ON

FDS MODE
XB DATA RATE (MI)

CR-5T

160(32)

31 -- 65 [D] - | 0940

1145 |----- 15 [D] -----| 1930

1910 |----- 45 [D] -----| 2340

DSN COVERAGE
HPTXR

32

1810 |----- 34 [o] -----| 0145

HPTXR

RTLT : 18h 34m 30s

1200 RTLT=18h 34m 32s

0000 RTLT=18h 34m 32s

VOYAGER 2

0922 | 0923 PWS/RH

FDSL : 11AF

CCSL : B114
TWNC : ON
SB : OFF XB : LOW
PYR : .05 / .10 / .25
GYROS : OFF

1130 | 1130 TAPPOS

0922
GS-4B 0923

FDS MODE
XB DATA RATE (MI)

CR-5T
160 (32)

CR-5T

160(32)

VOYAGER COVERAGE

----- ON CALL -----

NOTES

[1] S/C 32=GS-4B @ 0922 XB=2.8K(41) NOT RECOVERABLE

UTC: 8 9 10 11 12 13 14 15 16 17 18 19 20 21 22 23 0 1 2 3 4 5 6 7 8

ISSUE DATE: 01/23/02 - 07:53

PST: 0 1 2 3 4 5 6 7 8 9 10 11 12 13 14 15 16 17 18 19 20 21 22 23 0

SUNDAY
JANUARY 27, 2002
027-028

UTC: 8 9 10 11 12 13 14 15 16 17 18 19 20 21 22 23 0 1 2 3 4 5 6 7 8

RTLT : 23h 18m 52s

1200 RTLT=23h 18m 50s

0000 RTLT=23h 18m 50s

VOYAGER 1

FDSL : 11AF

CCSL : A041
TWNC : ON
SB : OFF XB : HIGH
PYR : .10 / .10 / .25
GYROS : ON

FDS MODE
XB DATA RATE (MI)

CR-5T

160(32)

31

1150 |----- 25 [D] -----| 2000

0530 |--- 63 [D] ---|

DSN COVERAGE
HPTXR

32

1715 |----- 45 [D] -----| 0335

HPTXR

RTLT : 18h 34m 32s

1200 RTLT=18h 34m 34s

0000 RTLT=18h 34m 36s

VOYAGER 2

FDSL : 11AF

CCSL : B114
TWNC : ON
SB : OFF XB : LOW
PYR : .05 / .10 / .25
GYROS : OFF

FDS MODE
XB DATA RATE (MI)

CR-5T

160(32)

VOYAGER COVERAGE

ON CALL

NOTES

UTC: 8 9 10 11 12 13 14 15 16 17 18 19 20 21 22 23 0 1 2 3 4 5 6 7 8

ISSUE DATE: 01/23/02 - 07:53

PST: 0 1 2 3 4 5 6 7 8 9 10 11 12 13 14 15 16 17 18 19 20 21 22 23 0

MONDAY
JANUARY 28, 2002
028-029

UTC: 8 9 10 11 12 13 14 15 16 17 18 19 20 21 22 23 0 1 2 3 4 5 6 7 8

RTLT : 23h 18m 50s

1200 RTLT=23h 18m 48s

0000 RTLT=23h 18m 48s

VOYAGER 1

FDSL : 11AF

CCSL : A041
TWNC : ON
SB : OFF XB : HIGH
PYR : .10 / .10 / .25
GYROS : ON

FDS MODE
XB DATA RATE (MI)

CR-5T

160(32)

31 -- 63 [D] - | 0935

1135 | ----- 25 [D] ----- | 1955

0635 | 63 [D] -

DSN COVERAGE
HPTXR

32

1730 | ----- 34 [D] ----- | 0305

HPTXR

RTLT : 18h 34m 36s

1200 RTLT=18h 34m 38s

0000 RTLT=18h 34m 40s

VOYAGER 2

FDSL : 11AF

CCSL : B114
TWNC : ON
SB : OFF XB : LOW
PYR : .05 / .10 / .25
GYROS : OFF

FDS MODE
XB DATA RATE (MI)

CR-5T

160(32)

VOYAGER COVERAGE

----- ON CALL -----

NOTES

UTC: 8 9 10 11 12 13 14 15 16 17 18 19 20 21 22 23 0 1 2 3 4 5 6 7 8

ISSUE DATE: 01/23/02 - 07:53

PST: 0 1 2 3 4 5 6 7 8 9 10 11 12 13 14 15 16 17 18 19 20 21 22 23 0

TUESDAY
JANUARY 29, 2002
029-030

UTC: 8 9 10 11 12 13 14 15 16 17 18 19 20 21 22 23 0 1 2 3 4 5 6 7 8

RTLTL : 23h 18m 48s

1200 RTLTL=23h 18m 46s

0000 RTLTL=23h 18m 46s

VOYAGER 1

↓ 1340 GYRO INIT

2158 | 2158 PWS/RH

FDSL : 11AF

CCSL : A041
TWNC : ON
SB : OFF XB : HIGH
PYR : .10 / .10 / .25
GYROS : ON

2158
GS-4B 2158

FDS MODE
XB DATA RATE (MI)

CR-5T
160(32)

CR-5T
160(32)

31 63 [D] | 0900

1155 |----- 25 [D] -----| 2055

0355 |----- 65 [D] -----

DSN COVERAGE
HPTXR

32

1700 |----- 43 -----| 0145

0530 |--- 45 [D] ---

HPTXR

RTLTL : 18h 34m 40s

1200 RTLTL=18h 34m 40s

0000 RTLTL=18h 34m 42s

VOYAGER 2

FDSL : 11AF

CCSL : B114
TWNC : ON
SB : OFF XB : LOW
PYR : .05 / .10 / .25
GYROS : OFF

2308 |----- COMMAND MORATORIUM -----

2058 | 2059 PWS/RH

2109 |----- DTR MAINT -----| 0236

0603 | - TAPPOS - -

▼ 2222 DUMMY (16:57)

0237 | 0240 TAPPOS

2058
GS-4B 2059

FDS MODE
XB DATA RATE (MI)

CR-5T
160(32)

CR-5T
160(32)

VOYAGER COVERAGE

ON CALL

VGR

ON CALL

NOTES

[1] S/C 32=GS-4B @ 2058 XB=2.8K(41) NOT RECOVERABLE
[2] S/C 31=GS-4B @ 2158 XB=2.8K(41) NOT RECOVERABLE

UTC: 8 9 10 11 12 13 14 15 16 17 18 19 20 21 22 23 0 1 2 3 4 5 6 7 8

ISSUE DATE: 01/23/02 - 07:53

PST: 0 1 2 3 4 5 6 7 8 9 10 11 12 13 14 15 16 17 18 19 20 21 22 23 0

WEDNESDAY
JANUARY 30, 2002
030-031

UTC: 8 9 10 11 12 13 14 15 16 17 18 19 20 21 22 23 0 1 2 3 4 5 6 7 8

RTLT : 23h 18m 46s

VOYAGER 1

FDSL : 11AF

CCSL : A041
TWNC : ON
SB : OFF XB : HIGH
PYR : .10 / .10 / .25
GYROS : ON

1200 RTLT=23h 18m 44s

0000 RTLT=23h 18m 44s

1349 | PLSCAL - | 1531
1349 | --- MAGCAL --- | 1651
1349 | --- PESCAL --- | 1709

FDS MODE
XB DATA RATE (MI)

CR-5T
160(32)

31 -- | 0825 65 [D]

1130 | ----- 25 [D] ----- | 2025

0405 | ----- 65 [D] -----

DSN COVERAGE
HPTXR

32 45 [D] | 0905

1650 | ----- 43 [D] ----- | 0330

HPTXR

1200 RTLT=18h 34m 44s

0000 RTLT=18h 34m 44s

RTLT : 18h 34m 42s

VOYAGER 2

FDSL : 11AF

CCSL : B114
TWNC : ON
SB : OFF XB : LOW
PYR : .05 / .10 / .25
GYROS : OFF

----- COMMAND MORATORIUM -----

↓ 1712 BAY 1 HTR OFF
↓ 1716 X/B HI POWER
↓ 1848 YAW=.05

↓ 0231 YAW=-.10
↓ 0317 X/B LOW POWER
↓ 0321 BAY 1 HTR ON

-- | 0827 TAPPOS

TAPPOS 0548 | | 0601

1858 | ----- PLAYBACK ----- | 0221

FDS MODE
XB DATA RATE (MI)

CR-5T
160(32)

1858

PB-14
1.4K(39)

0221

CR-5T
160(32)

VOYAGER COVERAGE

----- ON CALL ----- + ----- VGR ----- + ----- ON CALL -----

NOTES

UTC: 8 9 10 11 12 13 14 15 16 17 18 19 20 21 22 23 0 1 2 3 4 5 6 7 8

ISSUE DATE: 01/23/02 - 07:53

PST: 0 1 2 3 4 5 6 7 8 9 10 11 12 13 14 15 16 17 18 19 20 21 22 23 0

THURSDAY
JANUARY 31, 2002
031-032

UTC: 8 9 10 11 12 13 14 15 16 17 18 19 20 21 22 23 0 1 2 3 4 5 6 7 8

RTLT : 23h 18m 44s

1200 RTLT=23h 18m 42s

0000 RTLT=23h 18m 40s

VOYAGER 1

FDSL : 11AF

CCSL : A041
TWNC : ON
SB : OFF XB : HIGH
PYR : .10 / .10 / .25
GYROS : ON

FDS MODE
XB DATA RATE (MI)

CR-5T

160(32)

31 --| 0825 65 [D]

1125 |----- 25 [D] -----| 1925

0345 |----- 65 [D] -----|

DSN COVERAGE
HPTXR

32

1645 |----- 45 [D] -----| 2045

HPTXR

RTLT : 18h 34m 44s

1200 RTLT=18h 34m 46s

0000 RTLT=18h 34m 48s

VOYAGER 2

FDSL : 11AF

CCSL : B114
TWNC : ON
SB : OFF XB : LOW
PYR : .05 / .10 / .25
GYROS : OFF

----- COMMAND MORATORIUM -----

FDS MODE
XB DATA RATE (MI)

CR-5T

160(32)

VOYAGER COVERAGE

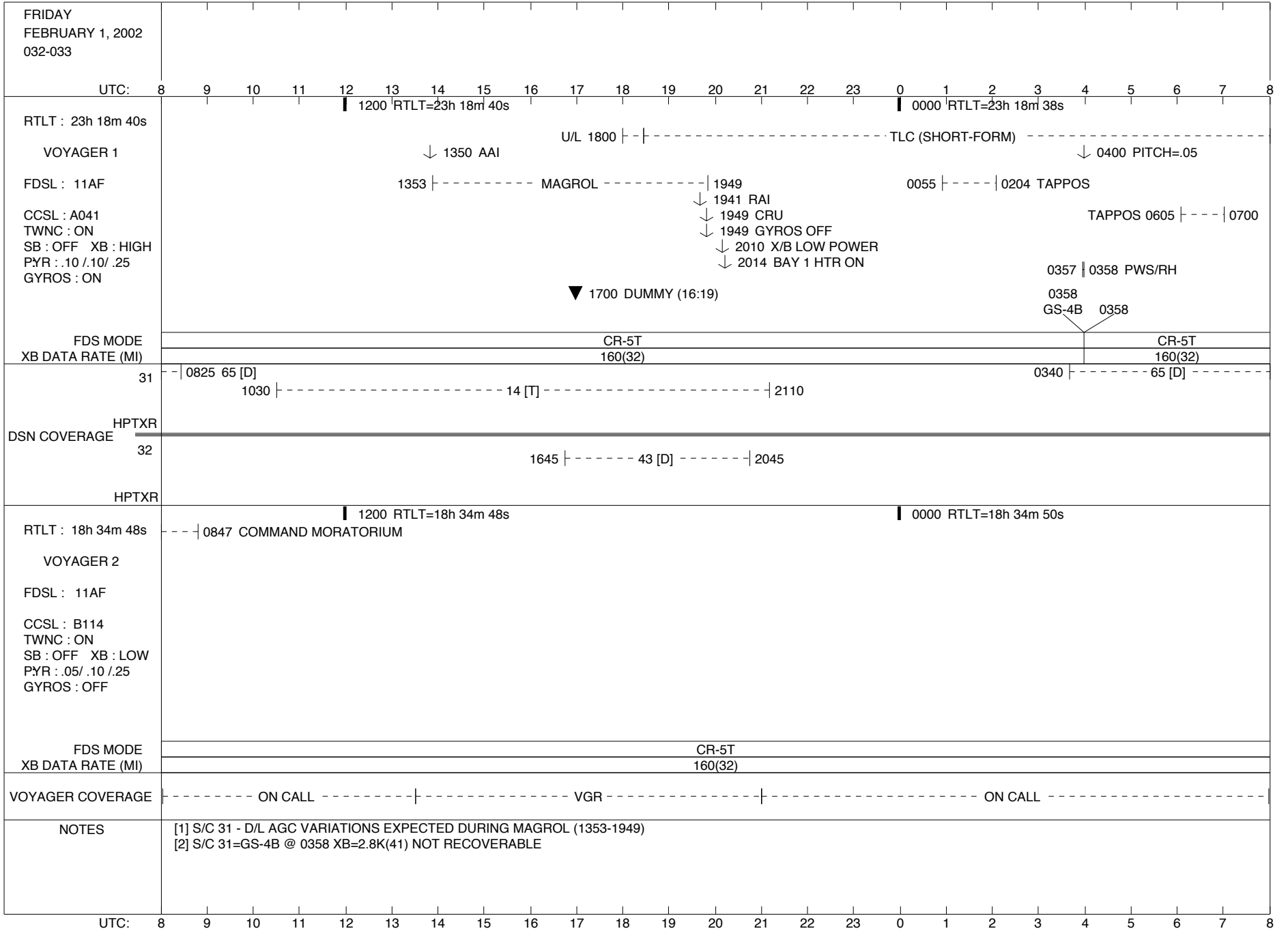
----- ON CALL -----

NOTES

UTC: 8 9 10 11 12 13 14 15 16 17 18 19 20 21 22 23 0 1 2 3 4 5 6 7 8

ISSUE DATE: 01/23/02 - 07:53

PST: 0 1 2 3 4 5 6 7 8 9 10 11 12 13 14 15 16 17 18 19 20 21 22 23 0



ISSUE DATE: 01/23/02 - 07:53

PST: 0 1 2 3 4 5 6 7 8 9 10 11 12 13 14 15 16 17 18 19 20 21 22 23 0

SATURDAY
FEBRUARY 2, 2002
033-034

UTC: 8 9 10 11 12 13 14 15 16 17 18 19 20 21 22 23 0 1 2 3 4 5 6 7 8

RTLTL : 23h 18m 38s

1200 RTLTL=23h 18m 36s

0000 RTLTL=23h 18m 36s

VOYAGER 1

----- TLC (SHORT-FORM) ----- | D/L - | 1846

↓ 1440 SLEW->HELIO-1B

↓ 0240 SLEW->HELIO-2B

FDSL : 11AF

CCSL : A041
TWNC : ON
SB : OFF XB : LOW
PYR : .05 / .10 / .25
GYROS : OFF

FDS MODE
XB DATA RATE (MI)

CR-5T

160(32)

31 --- | 0840 65 [D]

1555 |----- 25 [D] ----- | 1955

0340 |----- 65 [D] -----

DSN COVERAGE
HPTXR

32

1640 |----- 43 [D] ----- | 2155

HPTXR

RTLTL : 18h 34m 50s

1200 RTLTL=18h 34m 50s

0000 RTLTL=18h 34m 52s

VOYAGER 2

FDSL : 11AF

CCSL : B114
TWNC : ON
SB : OFF XB : LOW
PYR : .05 / .10 / .25
GYROS : OFF

FDS MODE
XB DATA RATE (MI)

CR-5T

160(32)

VOYAGER COVERAGE

----- ON CALL -----

NOTES

UTC: 8 9 10 11 12 13 14 15 16 17 18 19 20 21 22 23 0 1 2 3 4 5 6 7 8

ISSUE DATE: 01/23/02 - 07:53

PST: 0 1 2 3 4 5 6 7 8 9 10 11 12 13 14 15 16 17 18 19 20 21 22 23 0

SUNDAY
FEBRUARY 3, 2002
034-035

UTC: 8 9 10 11 12 13 14 15 16 17 18 19 20 21 22 23 0 1 2 3 4 5 6 7 8

RTLTL : 23h 18m 36s

1200 RTLTL=23h 18m 34s

0000 RTLTL=23h 18m 32s

VOYAGER 1

↓ 1440 SLEW->HELIO-3B

↓ 0240 SLEW->HELIO-4B

FDSL : 11AF

CCSL : A041
TWNC : ON
SB : OFF XB : LOW
PYR : .05 / .10 / .25
GYROS : OFF

FDS MODE
XB DATA RATE (MI)

CR-5T

160(32)

31 | 0825 65 [D]

1110 |----- 25 [D] -----| 2020

0335 |----- 65 [D] -----

DSN COVERAGE
HPTXR

32

1645 |----- 45 [D] -----

HPTXR

RTLTL : 18h 34m 52s

1200 RTLTL=18h 34m 52s

0000 RTLTL=18h 34m 52s

VOYAGER 2

FDSL : 11AF

CCSL : B114
TWNC : ON
SB : OFF XB : LOW
PYR : .05 / .10 / .25
GYROS : OFF

FDS MODE
XB DATA RATE (MI)

CR-5T

160(32)

VOYAGER COVERAGE

----- ON CALL -----

NOTES

UTC: 8 9 10 11 12 13 14 15 16 17 18 19 20 21 22 23 0 1 2 3 4 5 6 7 8

ISSUE DATE: 01/23/02 - 07:53

PST: 0 1 2 3 4 5 6 7 8 9 10 11 12 13 14 15 16 17 18 19 20 21 22 23 0

MONDAY
FEBRUARY 4, 2002
035-036

UTC: 8 9 10 11 12 13 14 15 16 17 18 19 20 21 22 23 0 1 2 3 4 5 6 7 8

RTLT : 23h 18m 32s

1200 RTLT=23h 18m 32s

0000 RTLT=23h 18m 30s

VOYAGER 1

↓ 1440 SLEW->HELIO-5B

↓ 0240 SLEW->HELIO-6B

FDSL : 11AF

CCSL : A041
TWNC : ON
SB : OFF XB : LOW
PYR : .05 / .10 / .25
GYROS : OFF

FDS MODE
XB DATA RATE (MI)

CR-5T

160(32)

31 | 0815 65 [D]

1125 |----- 25 [D] -----| 1650

HPTXR
DSN COVERAGE

32 | 0815 45 [D]

1715 |----- 34 [o] -----| 2245

0200 |-- 34 [o] --| 0355

HPTXR

RTLT : 18h 34m 52s

1200 RTLT=18h 34m 54s

0000 RTLT=18h 34m 54s

VOYAGER 2

FDSL : 11AF

CCSL : B114
TWNC : ON
SB : OFF XB : LOW
PYR : .05 / .10 / .25
GYROS : OFF

FDS MODE
XB DATA RATE (MI)

CR-5T

160(32)

VOYAGER COVERAGE

----- ON CALL -----

NOTES

UTC: 8 9 10 11 12 13 14 15 16 17 18 19 20 21 22 23 0 1 2 3 4 5 6 7 8

ISSUE DATE: 01/23/02 - 07:53

PST: 0 1 2 3 4 5 6 7 8 9 10 11 12 13 14 15 16 17 18 19 20 21 22 23 0

TUESDAY
FEBRUARY 5, 2002
036-037

UTC: 8 9 10 11 12 13 14 15 16 17 18 19 20 21 22 23 0 1 2 3 4 5 6 7 8

RTLTL : 23h 18m 30s

1200 RTLTL=23h 18m 28s

0000 RTLTL=23h 18m 28s

VOYAGER 1

↓ 1440 SLEW->HELIO-7B

2133 | 2134 PWS/RH

↓ 0240 SLEW->HELIO-8B

FDSL : 11AF

CCSL : A041
TWNC : ON
SB : OFF XB : LOW
PYR : .05 / .10 / .25
GYROS : OFF

2133
GS-4B 2134

FDS MODE
XB DATA RATE (MI)

CR-5T

CR-5T

31

1120

25 [D]

1810

1930

34 [D]

0055

0330

65 [D]

DSN COVERAGE
HPTXR

32

1625

43 [O]

0120

HPTXR

RTLTL : 18h 34m 54s

1200 RTLTL=18h 34m 54s

0000 RTLTL=18h 34m 56s

VOYAGER 2

2034 | 2035 PWS/RH

2148 | PLSCAL -| 2330

2148 | --- MAGCAL --- | 0050

2148 | ---- PESCAL ---- | 0108

FDSL : 11AF

CCSL : B114
TWNC : ON
SB : OFF XB : LOW
PYR : .05 / .10 / .25
GYROS : OFF

2034
GS-4B 2035

FDS MODE
XB DATA RATE (MI)

CR-5T

CR-5T

VOYAGER COVERAGE

ON CALL

NOTES

[1] S/C 32=GS-4B @ 2034 XB=2.8K(41) NOT RECOVERABLE
[2] S/C 31=GS-4B @ 2133 XB=2.8K(41) NOT RECOVERABLE

UTC: 8 9 10 11 12 13 14 15 16 17 18 19 20 21 22 23 0 1 2 3 4 5 6 7 8

ISSUE DATE: 01/23/02 - 07:53

PST: 0 1 2 3 4 5 6 7 8 9 10 11 12 13 14 15 16 17 18 19 20 21 22 23 0

WEDNESDAY
FEBRUARY 6, 2002
037-038

UTC: 8 9 10 11 12 13 14 15 16 17 18 19 20 21 22 23 0 1 2 3 4 5 6 7 8

RTLTL : 23h 18m 28s

1200 RTLTL=23h 18m 26s

0000 RTLTL=23h 18m 24s

VOYAGER 1

↓ 1440 SLEW->HELIO-9B

↓ 0240 SLEW->HELIO-10B

FDSL : 11AF

▼ 1600 DUMMY (15:18)

CCSL : A041
TWNC : ON
SB : OFF XB : LOW
PYR : .05 / .10 / .25
GYROS : OFF

FDS MODE
XB DATA RATE (MI)

CR-5T

160(32)

31 65 [D] | 0915

1230 | ----- 14 ----- | 1640

0330 | ----- 65 [D] -----

1620 | ----- 25 [D] ----- | 2025

DSN COVERAGE
HPTXR

1710 | ----- 34 [D] ----- | 2055

2050 | ----- 43 [B] ----- | 0240

32

HPTXR

RTLTL : 18h 34m 56s

1200 RTLTL=18h 34m 56s

0000 RTLTL=18h 34m 56s

VOYAGER 2

▼ 2200 CCSL B115 (16:36)

FDSL : 11AF

CCSL : B114
TWNC : ON
SB : OFF XB : LOW
PYR : .05 / .10 / .25
GYROS : OFF

FDS MODE
XB DATA RATE (MI)

CR-5T

160(32)

VOYAGER COVERAGE

----- ON CALL ----- | VGR -- | ----- ON CALL ----- | VGR -- | ----- ON CALL -----

NOTES

UTC: 8 9 10 11 12 13 14 15 16 17 18 19 20 21 22 23 0 1 2 3 4 5 6 7 8

ISSUE DATE: 01/23/02 - 07:53

PST: 0 1 2 3 4 5 6 7 8 9 10 11 12 13 14 15 16 17 18 19 20 21 22 23 0

THURSDAY
FEBRUARY 7, 2002
038-039

UTC: 8 9 10 11 12 13 14 15 16 17 18 19 20 21 22 23 0 1 2 3 4 5 6 7 8

RTLTL : 23h 18m 24s

1200 RTLTL=23h 18m 22s

0000 RTLTL=23h 18m 20s

VOYAGER 1

↓ 1440 SLEW->MIDPNT-B

↓ 0340 SLEW->HELIO-11B

FDSL : 11AF

CCSL : A041
TWNC : ON
SB : OFF XB : LOW
PYR : .05 / .10 / .25
GYROS : OFF

FDS MODE
XB DATA RATE (MI)

CR-5T

160(32)

31 65 [D] | 0915

1055 | ----- 15 [D] ----- | 1545

0330 | ----- 65 [D] -----

1935 | ----- 34 [D] ----- | 0030

DSN COVERAGE
HPTXR

32

1615 | ----- 43 [D] ----- | 0325

HPTXR

RTLTL : 18h 34m 56s

1200 RTLTL=18h 34m 56s

0000 RTLTL=18h 34m 58s

VOYAGER 2

FDSL : 11AF

CCSL : B114
TWNC : ON
SB : OFF XB : LOW
PYR : .05 / .10 / .25
GYROS : OFF

FDS MODE
XB DATA RATE (MI)

CR-5T

160(32)

VOYAGER COVERAGE

----- ON CALL -----

NOTES

UTC: 8 9 10 11 12 13 14 15 16 17 18 19 20 21 22 23 0 1 2 3 4 5 6 7 8

ISSUE DATE: 01/23/02 - 07:53

PST: 0 1 2 3 4 5 6 7 8 9 10 11 12 13 14 15 16 17 18 19 20 21 22 23 0

FRIDAY
FEBRUARY 8, 2002
039-040

UTC: 8 9 10 11 12 13 14 15 16 17 18 19 20 21 22 23 0 1 2 3 4 5 6 7 8

RTLTL : 23h 18m 20s

1200 RTLTL=23h 18m 20s

0000 RTLTL=23h 18m 18s

VOYAGER 1

↓ 1440 SLEW->HELIO-12B

↓ 0240 SLEW->HELIO-13B

FDSL : 11AF

0333 | 0334 PWS/RH

CCSL : A041
TWNC : ON
SB : OFF XB : LOW
PYR : .05 / .10 / .25
GYROS : OFF

U/L 0515 | - - |
TLC (SHORT-FORM) | - - - - - |

0031 | - - - | 0112 TAPPOS

TAPPOS 0541 | - - | 0608

0333
GS-4B 0334

FDS MODE
XB DATA RATE (MI)

CR-5T

160(32)

CR-5T

160(32)

31 65 [D] - | 0930

1045 | - - - - - | 15 [D] - - - - - | 1950

0455 | - - - - - | 63 [T] - - - - - |

DSN COVERAGE
HPTXR

32

1615 | - - - - - | 43 [D] - - - - - | 0325

HPTXR

RTLTL : 18h 34m 58s

1200 RTLTL=18h 34m 58s

0000 RTLTL=18h 34m 58s

VOYAGER 2

FDSL : 11AF

CCSL : B114
TWNC : ON
SB : OFF XB : LOW
PYR : .05 / .10 / .25
GYROS : OFF

FDS MODE
XB DATA RATE (MI)

CR-5T

160(32)

VOYAGER COVERAGE

ON CALL

NOTES

[1] S/C 31=GS-4B @ 0333 XB=2.8K(41) NOT RECOVERABLE

UTC: 8 9 10 11 12 13 14 15 16 17 18 19 20 21 22 23 0 1 2 3 4 5 6 7 8

ISSUE DATE: 01/23/02 - 07:53

PST: 0 1 2 3 4 5 6 7 8 9 10 11 12 13 14 15 16 17 18 19 20 21 22 23 0

SATURDAY
FEBRUARY 9, 2002
040-041

UTC: 8 9 10 11 12 13 14 15 16 17 18 19 20 21 22 23 0 1 2 3 4 5 6 7 8

RTLTL : 23h 18m 18s

1200 RTLTL=23h 18m 16s

0000 RTLTL=23h 18m 14s

VOYAGER 1

↓ 1440 SLEW->HELIO-14B

↓ 0240 SLEW->HELIO-15B

FDSL : 11AF

CCSL : A041

TWNC : ON

SB : OFF XB : LOW

PYR : .05 / .10 / .25

GYROS : OFF

TLC (SHORT-FORM)

D/L 0601

FDS MODE

CR-5T

XB DATA RATE (MI)

160(32)

31 63 [T] 0905

0435 63 [D]

1055 15 [D]

1830

1810

43 [D] 0155

DSN COVERAGE HPTXR

32

1700

34 [D]

0430

HPTXR

RTLTL : 18h 34m 58s

1200 RTLTL=18h 34m 58s

0000 RTLTL=18h 34m 58s

VOYAGER 2

FDSL : 11AF

CCSL : B114

TWNC : ON

SB : OFF XB : LOW

PYR : .05 / .10 / .25

GYROS : OFF

FDS MODE

CR-5T

XB DATA RATE (MI)

160(32)

VOYAGER COVERAGE

ON CALL

NOTES

UTC: 8 9 10 11 12 13 14 15 16 17 18 19 20 21 22 23 0 1 2 3 4 5 6 7 8

ISSUE DATE: 01/23/02 - 07:53

PST: 0 1 2 3 4 5 6 7 8 9 10 11 12 13 14 15 16 17 18 19 20 21 22 23 0

SUNDAY
FEBRUARY 10, 2002
041-042

UTC: 8 9 10 11 12 13 14 15 16 17 18 19 20 21 22 23 0 1 2 3 4 5 6 7 8

RTLTL : 23h 18m 14s
VOYAGER 1
FDSL : 11AF
CCSL : A041
TWNC : ON
SB : OFF XB : LOW
PYR : .05 / .10 / .25
GYROS : OFF

1200 RTLTL=23h 18m 12s

0000 RTLTL=23h 18m 10s

↓ 1440 SLEW->HELIO-16B

↓ 0240 SLEW->HELIO-17B

FDS MODE
XB DATA RATE (MI)

CR-5T

160(32)

31 63 [D] | 0915

1325 | ----- 25 [D] ----- | 2010

0545 | --- 54 [D] ---

2045 | ----- 43 [D] ----- | 2345

DSN COVERAGE
HPTXR

32

1620 | ----- 45 [D] ----- | 0000

HPTXR

RTLTL : 18h 34m 58s

1200 RTLTL=18h 34m 58s

0000 RTLTL=18h 34m 58s

VOYAGER 2

FDSL : 11AF

CCSL : B114

TWNC : ON

SB : OFF XB : LOW

PYR : .05 / .10 / .25

GYROS : OFF

FDS MODE
XB DATA RATE (MI)

CR-5T

160(32)

VOYAGER COVERAGE

----- ON CALL -----

NOTES

UTC: 8 9 10 11 12 13 14 15 16 17 18 19 20 21 22 23 0 1 2 3 4 5 6 7 8