

ISSUE DATE: 08/20/02 - 12:50

PDT: 0 1 2 3 4 5 6 7 8 9 10 11 12 13 14 15 16 17 18 19 20 21 22 23 0

THURSDAY  
AUGUST 15, 2002  
227-228

UTC: 7 8 9 10 11 12 13 14 15 16 17 18 19 20 21 22 23 0 1 2 3 4 5 6 7

RTLTL : 23h 39m 8s

1200 RTLTL=23h 39m 20s

0000 RTLTL=23h 39m 32s

VOYAGER 1

TLC (SHORT-FORM)

D/L -|0137

↓ 0250 SLEW->HELIO-18A

FDSL : 11AF

S/C 31 STATUS
FDS CLOCK DRIFT: ADD TO S/C EVENT ERT: -23.566 sec
ROLLREF = RIGIL KENTAURUS

CCSL : A044  
TWNC : ON  
SB : OFF XB : LOW  
PYR : .05/ .10/ .25  
GYROS : OFF

FDS MODE  
XB DATA RATE (MI)

CR-5T  
160 (32)

31

45 [D] -----| 1200

2320 |----- 25 [D] -----| 0320

DSN COVERAGE  
HPTXR

32

43 [D] -----| 0720 - 1400

0345 |----- 45 [D] -----

HPTXR

RTLTL : 18h 36m 48s

1200 RTLTL=18h 36m 56s

0000 RTLTL=18h 37m 4s

VOYAGER 2

S/C 32 STATUS
FDS CLOCK DRIFT: ADD TO S/C EVENT ERT: -1:20.840 sec
ROLLREF = VEGA

FDSL : 11AF

CCSL : B117  
TWNC : ON  
SB : OFF XB : LOW  
PYR : .05/ .10/ .25  
GYROS : OFF

FDS MODE  
XB DATA RATE (MI)

CR-5T  
160 (32)

VOYAGER COVERAGE

ON CALL

NOTES

UTC: 7 8 9 10 11 12 13 14 15 16 17 18 19 20 21 22 23 0 1 2 3 4 5 6 7

ISSUE DATE: 08/20/02 - 12:50

PDT: 0 1 2 3 4 5 6 7 8 9 10 11 12 13 14 15 16 17 18 19 20 21 22 23 0

FRIDAY  
AUGUST 16, 2002  
228-229

UTC: 7 8 9 10 11 12 13 14 15 16 17 18 19 20 21 22 23 0 1 2 3 4 5 6 7

RTLT : 23h 39m 32s

1200 RTLT=23h 39m 42s

0000 RTLT=23h 39m 54s

VOYAGER 1

1656 | 1657 PWS/RH

↓ 0251 SLEW->HELIO-17A

FDSL : 11AF

CCSL : A044  
TWNC : ON  
SB : OFF XB : LOW  
PYR : .05/ .10/ .25  
GYROS : OFF

1354 | - - | 1436 TAPPOS

1903 | - - | 1931 TAPPOS

1656  
GS-4B 1657

FDS MODE  
XB DATA RATE (MI)

CR-5T  
160 (32)

CR-5T  
160(32)

31

| - - 34 [D] - - | 0745 - 0945

2245 | - - - - - 15 [D] - - - - - | 0355

DSN COVERAGE  
HPTXR

32

- - - | 0740 45 [D]

| - - - - - 43 [o] - - - - - | 0735 - 1300

0415 | - - - 34 [D] - - -

HPTXR

RTLT : 18h 37m 4s

1200 RTLT=18h 37m 14s

0000 RTLT=18h 37m 22s

VOYAGER 2

FDSL : 11AF

CCSL : B117  
TWNC : ON  
SB : OFF XB : LOW  
PYR : .05/ .10/ .25  
GYROS : OFF

FDS MODE  
XB DATA RATE (MI)

CR-5T  
160 (32)

VOYAGER COVERAGE

- - - - - ON CALL - - - - -

NOTES

[1] S/C 31=GS-4B @ 1656 XB=2.8K(41) NOT RECOVERABLE

UTC: 7 8 9 10 11 12 13 14 15 16 17 18 19 20 21 22 23 0 1 2 3 4 5 6 7

ISSUE DATE: 08/20/02 - 12:50

PDT: 0 1 2 3 4 5 6 7 8 9 10 11 12 13 14 15 16 17 18 19 20 21 22 23 0

SATURDAY  
AUGUST 17, 2002  
229-230

UTC: 7 8 9 10 11 12 13 14 15 16 17 18 19 20 21 22 23 0 1 2 3 4 5 6 7

RTLT : 23h 39m 54s

1200 RTLT=23h 40m 6s

0000 RTLT=23h 40m 18s

↓ 0251 SLEW->HELIO-16A

VOYAGER 1

FDSL : 11AF

CCSL : A044  
TWNC : ON  
SB : OFF XB : LOW  
PYR : .05/ .10/ .25  
GYROS : OFF

FDS MODE  
XB DATA RATE (MI)

CR-5T

160(32)

31

1945 |----- 54 [D] -----| 2320  
2300 |----- 25 [D] -----|

DSN COVERAGE HPTXR

32

--- 34 [D] ---| 0915

1615 |----- 34 [D] -----| 1945

0435 |--- 34 [o] ---|

HPTXR

RTLT : 18h 37m 22s

1200 RTLT=18h 37m 32s

0000 RTLT=18h 37m 40s

VOYAGER 2

FDSL : 11AF

CCSL : B117  
TWNC : ON  
SB : OFF XB : LOW  
PYR : .05/ .10/ .25  
GYROS : OFF

FDS MODE  
XB DATA RATE (MI)

CR-5T

160 (32)

VOYAGER COVERAGE

----- ON CALL -----

NOTES

UTC: 7 8 9 10 11 12 13 14 15 16 17 18 19 20 21 22 23 0 1 2 3 4 5 6 7

ISSUE DATE: 08/20/02 - 12:50

PDT: 0 1 2 3 4 5 6 7 8 9 10 11 12 13 14 15 16 17 18 19 20 21 22 23 0

SUNDAY  
AUGUST 18, 2002  
230-231

UTC: 7 8 9 10 11 12 13 14 15 16 17 18 19 20 21 22 23 0 1 2 3 4 5 6 7

RTLT : 23h 40m 18s

1200 RTLT=23h 40m 30s

0000 RTLT=23h 40m 40s

↓ 0251 SLEW->HELIO-15A

VOYAGER 1

FDSL : 11AF

CCSL : A044  
TWNC : ON  
SB : OFF XB : LOW  
PYR : .05/ .10/ .25  
GYROS : OFF

FDS MODE  
XB DATA RATE (MI)

CR-5T

160(32)

31

0745 25 [D]

0100 |----- 15 [D] -----| 0355

|----- 43 [D] -----| 0725- 1350

1905 |----- 63 [D] -----| 0120

DSN COVERAGE  
HPTXR

32

----- 34 [o] -----| 1220

0430 |----- 34 [D] -----|

HPTXR

RTLT : 18h 37m 40s

1200 RTLT=18h 37m 50s

0000 RTLT=18h 37m 58s

VOYAGER 2

FDSL : 11AF

CCSL : B117  
TWNC : ON  
SB : OFF XB : LOW  
PYR : .05/ .10/ .25  
GYROS : OFF

FDS MODE  
XB DATA RATE (MI)

CR-5T

160 (32)

VOYAGER COVERAGE

----- ON CALL -----

NOTES

UTC: 7 8 9 10 11 12 13 14 15 16 17 18 19 20 21 22 23 0 1 2 3 4 5 6 7

ISSUE DATE: 08/20/02 - 12:50

PDT: 0 1 2 3 4 5 6 7 8 9 10 11 12 13 14 15 16 17 18 19 20 21 22 23 0

MONDAY  
AUGUST 19, 2002  
231-232

UTC: 7 8 9 10 11 12 13 14 15 16 17 18 19 20 21 22 23 0 1 2 3 4 5 6 7

RTLT : 23h 40m 40s

1200 RTLT=23h 40m 52s

0000 RTLT=23h 41m 4s

↓ 0251 SLEW->HELIO-14A

VOYAGER 1

FDSL : 11AF

CCSL : A044  
TWNC : ON  
SB : OFF XB : LOW  
PYR : .05/ .10/ .25  
GYROS : OFF

FDS MODE  
XB DATA RATE (MI)

CR-5T  
160(32)

31

1125 |--- 34 [D] ---| 1350

0030 |----- 15 [D] -----| 0355 43 [D] 0630 |---

DSN COVERAGE HPTXR

32

----- 34 [D] -----| 1055

HPTXR

RTLT : 18h 37m 58s

1200 RTLT=18h 38m 8s

0000 RTLT=18h 38m 16s

VOYAGER 2

FDSL : 11AF

CCSL : B117  
TWNC : ON  
SB : OFF XB : LOW  
PYR : .05/ .10/ .25  
GYROS : OFF

FDS MODE  
XB DATA RATE (MI)

CR-5T  
160 (32)

VOYAGER COVERAGE

----- ON CALL -----

NOTES

UTC: 7 8 9 10 11 12 13 14 15 16 17 18 19 20 21 22 23 0 1 2 3 4 5 6 7



ISSUE DATE: 08/20/02 - 12:50

PDT: 0 1 2 3 4 5 6 7 8 9 10 11 12 13 14 15 16 17 18 19 20 21 22 23 0

WEDNESDAY  
AUGUST 21, 2002  
233-234

UTC: 7 8 9 10 11 12 13 14 15 16 17 18 19 20 21 22 23 0 1 2 3 4 5 6 7

RTLT : 23h 41m 28s

1200 RTLT=23h 41m 40s

0000 RTLT=23h 41m 52s

↓ 0252 SLEW->HELIO-12A

VOYAGER 1

FDSL : 11AF

TLC (SHORT-FORM) | D/L | 0100

CCSL : A044  
TWNC : ON  
SB : OFF XB : LOW  
PYR : .05/ .10/ .25  
GYROS : OFF

FDS MODE  
XB DATA RATE (MI)

CR-5T

160(32)

31

2220 |----- 25 [D] -----| 0345

DSN COVERAGE  
HPTXR

32

|----- 34 [D] -----| 0715- 1450  
1430 |----- 43 -----| 1910

HPTXR

RTLT : 18h 38m 34s

1200 RTLT=18h 38m 44s

0000 RTLT=18h 38m 52s

VOYAGER 2

FDSL : 11AF

- ▼ 1547 DUMMY (10:26)
- ▼ 1536 EL-40 (10:15)
- ▼ 1550 CCS U/D ECR 100862A (10:30)
- ▼ 1556 CCSL B117 MS (10:35)
- ▼ 1612 CCSA MRO (10:52)
- ▼ 1627 CCSB MRO (11:06)
- ▼ 1637 EH-12 TLMRST TEST (11:16)
- ▼ 1647 CCS TLMRST (11:26)
- ▼ 1702 CR-5T (11:41)

CCSL : B117  
TWNC : ON  
SB : OFF XB : LOW  
PYR : .05/ .10/ .25  
GYROS : OFF

FDS MODE  
XB DATA RATE (MI)

CR-5T

160(32)

VOYAGER COVERAGE

|----- ON CALL -----|----- VGR -----|----- ON CALL -----|

NOTES

UTC: 7 8 9 10 11 12 13 14 15 16 17 18 19 20 21 22 23 0 1 2 3 4 5 6 7

ISSUE DATE: 08/20/02 - 12:50

PDT: 0 1 2 3 4 5 6 7 8 9 10 11 12 13 14 15 16 17 18 19 20 21 22 23 0

THURSDAY  
AUGUST 22, 2002  
234-235

UTC: 7 8 9 10 11 12 13 14 15 16 17 18 19 20 21 22 23 0 1 2 3 4 5 6 7

RTLTL : 23h 41m 52s

1200 RTLTL=23h 42m 2s

0000 RTLTL=23h 42m 14s

↓ 0252 SLEW->HELIO-11A

VOYAGER 1

FDSL : 11AF

CCSL : A044  
TWNC : ON  
SB : OFF XB : LOW  
PYR : .05/ .10/ .25  
GYROS : OFF

FDS MODE  
XB DATA RATE (MI)

CR-5T

160(32)

31

1135 | - 43 [D] - - | 1330

0040 | - - - - - 15 [D] - - - - -

1855 | - - - - - 63 [D] - - - - - | 0100

DSN COVERAGE HPTXR

32

1000 | - - - - - 45 [D] - - - - - | 1935

HPTXR

RTLTL : 18h 38m 52s

1200 RTLTL=18h 39m 2s

0000 RTLTL=18h 39m 12s

VOYAGER 2

FDSL : 11AF

CCSL : B117  
TWNC : ON  
SB : OFF XB : LOW  
PYR : .05/ .10/ .25  
GYROS : OFF

\* 1040 | 1045 CCS CHKSUM  
\* 1053 | 1054 CCSA MRO  
\* 1108 | 1109 CCSB MRO  
\* 1119 \* 1120  
EH-12 EL-40  
\* 1018 \* 1144

FDS MODE  
XB DATA RATE (MI)

CR-5T

EL-40

CR-5T

160(32)

40(40)

160(32)

VOYAGER COVERAGE

- - - ON CALL - - - | - - - VGR - - - | - - - - - - - - - - - - - ON CALL - - - - -

NOTES

[1] S/C32= EL-40 @ 1018 & 1120 XB=40(30)  
[2] S/C32= EH-12 @ 1119 XB=1.2K FOR TLMRST TEST, NOT RECOVERABLE

UTC: 7 8 9 10 11 12 13 14 15 16 17 18 19 20 21 22 23 0 1 2 3 4 5 6 7



ISSUE DATE: 08/20/02 - 12:50

PDT: 0 1 2 3 4 5 6 7 8 9 10 11 12 13 14 15 16 17 18 19 20 21 22 23 0

FRIDAY  
AUGUST 23, 2002  
235-236

UTC: 7 8 9 10 11 12 13 14 15 16 17 18 19 20 21 22 23 0 1 2 3 4 5 6 7

RTLTL : 23h 42m 14s

1200 RTLTL=23h 42m 26s 0000 RTLTL=23h 42m 38s

VOYAGER 1

1633 | 1634 PWS/RH

↓ 1930 GYROS BC ON

↓ 1931 GYRO INIT

↓ 1940 GYRO FAULT TEST

↓ 0252 SLEW->MIDPNT

FDSL : 11AF

1331 | 1345 TAPPOS

1840 | 1841 TAPPOS

CCSL : A044  
TWNC : ON  
SB : OFF XB : LOW  
PYR : .05/ .10/ .25  
GYROS : OFF

1633  
GS-4B 1634

FDS MODE  
XB DATA RATE (MI)

CR-5T  
160(32)

CR-5T  
160(32)

31 --- | 0740 15 [D]

1850 | ----- 63 [D] ----- | 0055

DSN COVERAGE  
HPTXR

32 1045 | ----- 34 [D] ----- | 1915

HPTXR

RTLTL : 18h 39m 12s

1200 RTLTL=18h 39m 22s 0000 RTLTL=18h 39m 30s

VOYAGER 2

FDSL : 11AF

CCSL : B117  
TWNC : ON  
SB : OFF XB : LOW  
PYR : .05/ .10/ .25  
GYROS : OFF

FDS MODE  
XB DATA RATE (MI)

CR-5T  
160(32)

VOYAGER COVERAGE

----- ON CALL ----- | - VGR - | ----- ON CALL -----

NOTES

[1] S/C 31=GS-4B @ 1633 XB=2.8K(41) NOT RECOVERABLE

UTC: 7 8 9 10 11 12 13 14 15 16 17 18 19 20 21 22 23 0 1 2 3 4 5 6 7

ISSUE DATE: 08/20/02 - 12:50

PDT: 0 1 2 3 4 5 6 7 8 9 10 11 12 13 14 15 16 17 18 19 20 21 22 23 0

SATURDAY  
AUGUST 24, 2002  
236-237

UTC: 7 8 9 10 11 12 13 14 15 16 17 18 19 20 21 22 23 0 1 2 3 4 5 6 7

RTLT : 23h 42m 38s

1200 RTLT=23h 42m 50s

0000 RTLT=23h 43m 2s

↓ 0252 SLEW->HELIO-10A

VOYAGER 1

FDSL : 11AF

CCSL : A044  
TWNC : ON  
SB : OFF XB : LOW  
PYR : .05/ .10/ .25  
GYROS : BC ON

FDS MODE  
XB DATA RATE (MI)

CR-5T

160(32)

31 | 0725 25 [D]

1850 | ----- 63 [D] -----

0220 | ----- 25 [D] -----

45 [D] 0700

DSN COVERAGE  
HPTXR

32 | ----- 43 [o] ----- | 0730 - 1730

HPTXR

RTLT : 18h 39m 30s

1200 RTLT=18h 39m 40s

0000 RTLT=18h 39m 50s

VOYAGER 2

FDSL : 11AF

CCSL : B117  
TWNC : ON  
SB : OFF XB : LOW  
PYR : .05/ .10/ .25  
GYROS : OFF

FDS MODE  
XB DATA RATE (MI)

CR-5T

160(32)

VOYAGER COVERAGE

----- ON CALL -----

NOTES

UTC: 7 8 9 10 11 12 13 14 15 16 17 18 19 20 21 22 23 0 1 2 3 4 5 6 7

ISSUE DATE: 08/20/02 - 12:50

PDT: 0 1 2 3 4 5 6 7 8 9 10 11 12 13 14 15 16 17 18 19 20 21 22 23 0

SUNDAY  
AUGUST 25, 2002  
237-238

UTC: 7 8 9 10 11 12 13 14 15 16 17 18 19 20 21 22 23 0 1 2 3 4 5 6 7

RTLT : 23h 43m 2s

1200 RTLT=23h 43m 14s

0000 RTLT=23h 43m 26s

↓ 0252 SLEW->HELIO-9A

VOYAGER 1

FDSL : 11AF

CCSL : A044  
TWNC : ON  
SB : OFF XB : LOW  
PYR : .05/ .10/ .25  
GYROS : BC ON

FDS MODE  
XB DATA RATE (MI)

CR-5T

160(32)

31 -| 0720 25 [D]

0225 |----- 15 [D] -----

----- 45 [D] ----- | 0700 - 1225

DSN COVERAGE  
HPTXR

32 |----- 43 [D] ----- | 0710 - 1600

HPTXR

RTLT : 18h 39m 50s

1200 RTLT=18h 40m 0s

0000 RTLT=18h 40m 8s

VOYAGER 2

FDSL : 11AF

CCSL : B117  
TWNC : ON  
SB : OFF XB : LOW  
PYR : .05/ .10/ .25  
GYROS : OFF

FDS MODE  
XB DATA RATE (MI)

CR-5T

160(32)

VOYAGER COVERAGE

----- ON CALL -----

NOTES

UTC: 7 8 9 10 11 12 13 14 15 16 17 18 19 20 21 22 23 0 1 2 3 4 5 6 7

ISSUE DATE: 08/20/02 - 12:50

PDT: 0 1 2 3 4 5 6 7 8 9 10 11 12 13 14 15 16 17 18 19 20 21 22 23 0

MONDAY  
AUGUST 26, 2002  
238-239

UTC: 7 8 9 10 11 12 13 14 15 16 17 18 19 20 21 22 23 0 1 2 3 4 5 6 7

RTLT : 23h 43m 26s  
 VOYAGER 1  
 FDSL : 11AF  
 CCSL : A044  
 TWNC : ON  
 SB : OFF XB : LOW  
 PYR : .05/ .10/ .25  
 GYROS : BC ON

1200 RTLT=23h 43m 38s  
 0000 RTLT=23h 43m 50s  
 ↓ 0253 SLEW->HELIO-8A

FDS MODE CR-5T  
 XB DATA RATE (MI) 160(32)

31 | 0725 15 [D]  
 |-----43 [D]-----| 0710- 1320  
 2220 |-----25 [D]-----| 0545

DSN COVERAGE HPTXR  
 32 | 0820 |-----34 [D]-----| 1905  
 |-----43 [B] 0645 |

HPTXR

RTLT : 18h 40m 8s  
 VOYAGER 2  
 FDSL : 11AF  
 CCSL : B117  
 TWNC : ON  
 SB : OFF XB : LOW  
 PYR : .05/ .10/ .25  
 GYROS : OFF

1200 RTLT=18h 40m 18s  
 0000 RTLT=18h 40m 28s

FDS MODE CR-5T  
 XB DATA RATE (MI) 160(32)

VOYAGER COVERAGE ----- ON CALL -----

NOTES

UTC: 7 8 9 10 11 12 13 14 15 16 17 18 19 20 21 22 23 0 1 2 3 4 5 6 7

ISSUE DATE: 08/20/02 - 12:50

PDT: 0 1 2 3 4 5 6 7 8 9 10 11 12 13 14 15 16 17 18 19 20 21 22 23 0

TUESDAY  
AUGUST 27, 2002  
239-240

UTC: 7 8 9 10 11 12 13 14 15 16 17 18 19 20 21 22 23 0 1 2 3 4 5 6 7

RTLT : 23h 43m 50s

1200 RTLT=23h 44m 0s

0000 RTLT=23h 44m 12s

VOYAGER 1

1010 | 1011 PWS/RH

↓ 2031 GYRO INIT

↓ 0253 SLEW->HELIO-7A

FDSL : 11AF

U/L 1925 | - | - - - - - TLC (SHORT-FORM) - - - - -

CCSL : A044  
TWNC : ON  
SB : OFF XB : LOW  
PYR : .05/ .10/ .25  
GYROS : BC ON

▼ 1910 DUMMY (18:54)

1010  
GS-4B 1011

FDS MODE  
XB DATA RATE (MI)

CR-5T  
160(32)

CR-5T  
160(32)

31

1610 | - - - - - 63 [T] - - - - - | 1955

2145 | - - - - - 25 [D] - - - - -

DSN COVERAGE  
HPTXR

32

43 [B] - - - - - | 1850

HPTXR

RTLT : 18h 40m 28s

1200 RTLT=18h 40m 38s

0000 RTLT=18h 40m 48s

VOYAGER 2

0901 | 0902 PWS/RH

▼ 1642 DUMMY (5 MIN BRACKETED 11:23)

FDSL : 11AF

CCSL : B117  
TWNC : ON  
SB : OFF XB : LOW  
PYR : .05/ .10/ .25  
GYROS : OFF

0901  
GS-4B 0902

FDS MODE  
XB DATA RATE (MI)

CR-5T  
160(32)

CR-5T  
160(32)

VOYAGER COVERAGE

- - - - - ON CALL - - - - - + - - VGR - - - + - VGR - + - - - - ON CALL - - - - -

NOTES

[1] S/C 32=GS-4B @ 0901 XB=2.8K(41) NOT RECOVERABLE  
[2] S/C 31=GS-4B @ 1010 XB=2.8K(41) NOT RECOVERABLE

UTC: 7 8 9 10 11 12 13 14 15 16 17 18 19 20 21 22 23 0 1 2 3 4 5 6 7

ISSUE DATE: 08/20/02 - 12:50

PDT: 0 1 2 3 4 5 6 7 8 9 10 11 12 13 14 15 16 17 18 19 20 21 22 23 0

WEDNESDAY  
AUGUST 28, 2002  
240-241

UTC: 7 8 9 10 11 12 13 14 15 16 17 18 19 20 21 22 23 0 1 2 3 4 5 6 7

RTLTL : 23h 44m 12s

1200 RTLTL=23h 44m 24s

0000 RTLTL=23h 44m 36s

↓ 0253 SLEW->HELIO-6A

VOYAGER 1

FDSL : 11AF

----- TLC (SHORT-FORM) ----- | D/L -| 2037

CCSL : A044  
TWNC : ON  
SB : OFF XB : LOW  
PYR : .05/ .10/ .25  
GYROS : BC ON

FDS MODE  
XB DATA RATE (MI)

CR-5T

160(32)

31 | 0710 25 [D]

0120 | ----- 25 [D] -----

| ----- 43 [D] ----- | 0705 - 1315

1845 | ----- 63 [D] ----- | 0035

DSN COVERAGE  
HPTXR

32 0940 | ----- 34 [D] ----- | 1850

HPTXR

RTLTL : 18h 40m 48s

1200 RTLTL=18h 40m 58s

0000 RTLTL=18h 41m 8s

VOYAGER 2

1850 | ----- COMMAND MORATORIUM -----

FDSL : 11AF

CCSL : B117  
TWNC : ON  
SB : OFF XB : LOW  
PYR : .05/ .10/ .25  
GYROS : OFF

FDS MODE  
XB DATA RATE (MI)

CR-5T

160(32)

VOYAGER COVERAGE

----- ON CALL -----

NOTES

UTC: 7 8 9 10 11 12 13 14 15 16 17 18 19 20 21 22 23 0 1 2 3 4 5 6 7

ISSUE DATE: 08/20/02 - 12:50

PDT: 0 1 2 3 4 5 6 7 8 9 10 11 12 13 14 15 16 17 18 19 20 21 22 23 0

THURSDAY  
AUGUST 29, 2002  
241-242

UTC: 7 8 9 10 11 12 13 14 15 16 17 18 19 20 21 22 23 0 1 2 3 4 5 6 7

RTLT : 23h 44m 36s

1200 RTLT=23h 44m 48s

0000 RTLT=23h 45m 0s

↓ 0253 SLEW->HELIO-5A

VOYAGER 1

FDSL : 11AF

CCSL : A044  
TWNC : ON  
SB : OFF XB : LOW  
PYR : .05/ .10/ .25  
GYROS : BC ON

FDS MODE  
XB DATA RATE (MI)

CR-5T

160(32)

31 0705 25 [D] 2330 |----- 15 [D] -----

----- 45 [D] ----- | 0705 - 1105

DSN COVERAGE  
HPTXR

32 |----- 43 [B] ----- | 0720 - 1700

HPTXR

RTLT : 18h 41m 8s

1200 RTLT=18h 41m 18s

0000 RTLT=18h 41m 28s

VOYAGER 2

----- COMMAND MORATORIUM -----

FDSL : 11AF

- ↓ 1301 GYRO INIT
- ↓ 1301 GYROS AC ON
- ↓ 1301 MEMUPD SELECT AAB GYROS
- ↓ 1311 GYRO FAULT TEST

CCSL : B117  
TWNC : ON  
SB : OFF XB : LOW  
PYR : .05/ .10/ .25  
GYROS : OFF

FDS MODE  
XB DATA RATE (MI)

CR-5T

160(32)

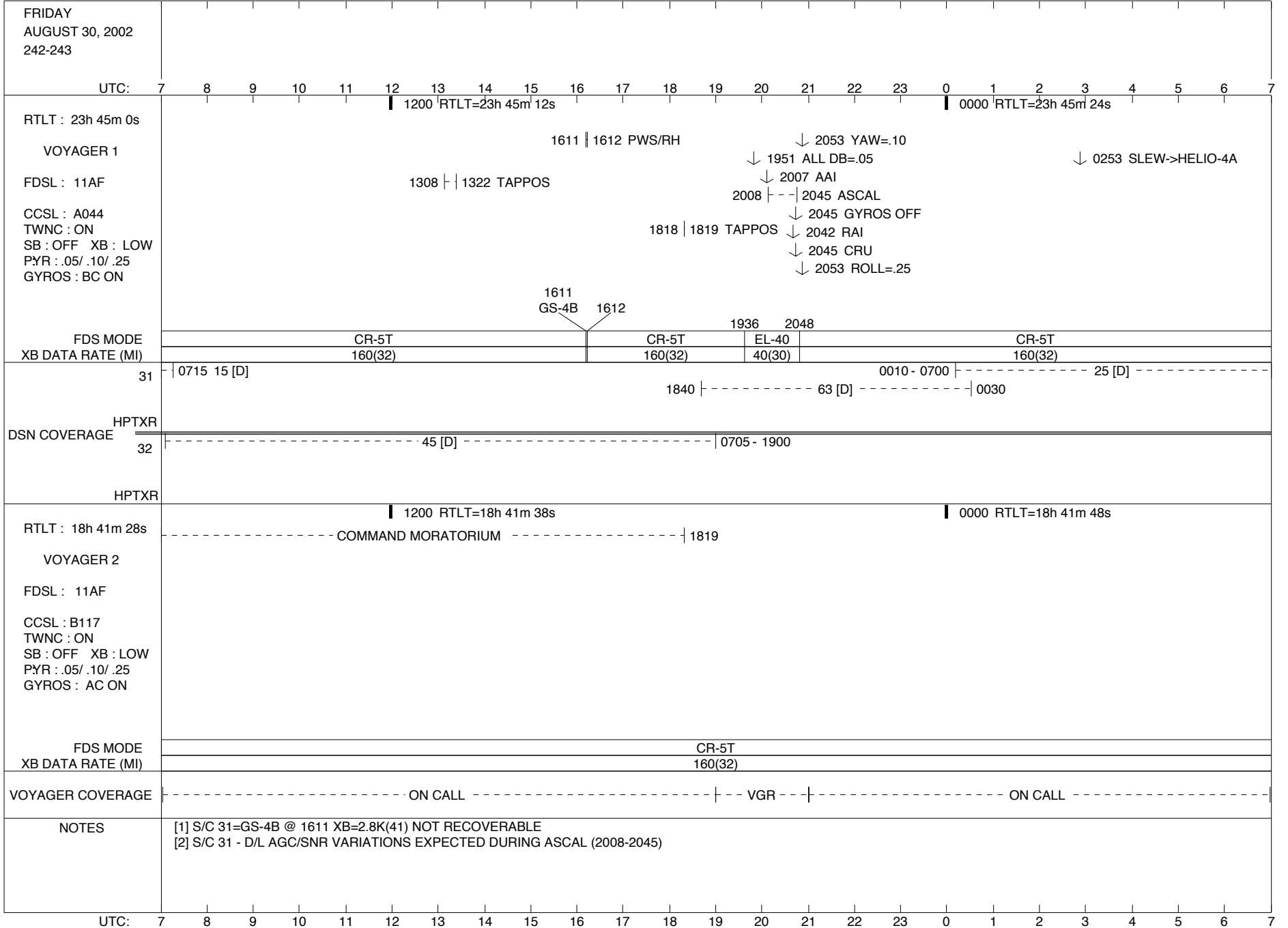
VOYAGER COVERAGE |----- ON CALL ----- | - VGR - |----- ON CALL ----- |

NOTES

UTC: 7 8 9 10 11 12 13 14 15 16 17 18 19 20 21 22 23 0 1 2 3 4 5 6 7

ISSUE DATE: 08/20/02 - 12:50

PDT: 0 1 2 3 4 5 6 7 8 9 10 11 12 13 14 15 16 17 18 19 20 21 22 23 0





ISSUE DATE: 08/20/02 - 12:50

PDT: 0 1 2 3 4 5 6 7 8 9 10 11 12 13 14 15 16 17 18 19 20 21 22 23 0

SATURDAY  
AUGUST 31, 2002  
243-244

UTC: 7 8 9 10 11 12 13 14 15 16 17 18 19 20 21 22 23 0 1 2 3 4 5 6 7

RTLT : 23h 45m 24s

1200 RTLT=23h 45m 36s

0000 RTLT=23h 45m 48s

↓ 0254 SLEW->HELIO-3A

VOYAGER 1

FDSL : 11AF

CCSL : A044  
TWNC : ON  
SB : OFF XB : LOW  
PYR : .05 / .10 / .25  
GYROS : OFF

FDS MODE  
XB DATA RATE (MI)

CR-5T

160(32)

31 0700 25 [D]

----- 43 [D] ----- | 0710 - 1305

2130 - 0655 | ----- 25 [D] ----- |

DSN COVERAGE  
HPTXR

32

0845 | ----- 34 [o] ----- | 1515

HPTXR

RTLT : 18h 41m 48s

1200 RTLT=18h 41m 58s

0000 RTLT=18h 42m 8s

VOYAGER 2

↓ 1301 GYRO INIT

FDSL : 11AF

CCSL : B117  
TWNC : ON  
SB : OFF XB : LOW  
PYR : .05 / .10 / .25  
GYROS : AC ON

FDS MODE  
XB DATA RATE (MI)

CR-5T

160(32)

VOYAGER COVERAGE

----- ON CALL -----

NOTES

UTC: 7 8 9 10 11 12 13 14 15 16 17 18 19 20 21 22 23 0 1 2 3 4 5 6 7

ISSUE DATE: 08/20/02 - 12:50

PDT: 0 1 2 3 4 5 6 7 8 9 10 11 12 13 14 15 16 17 18 19 20 21 22 23 0

SUNDAY  
SEPTEMBER 1, 2002  
244-245

UTC: 7 8 9 10 11 12 13 14 15 16 17 18 19 20 21 22 23 0 1 2 3 4 5 6 7

RTLT : 23h 45m 48s

1200 RTLT=23h 46m 0s

0000 RTLT=23h 46m 12s

↓ 0254 SLEW->HELIO-2A

VOYAGER 1

FDSL : 11AF

CCSL : A044  
TWNC : ON  
SB : OFF XB : LOW  
PYR : .05 / .10 / .25  
GYROS : OFF

FDS MODE  
XB DATA RATE (MI)

CR-5T

160(32)

31

1830 |----- 63 [D] -----| 0020

DSN COVERAGE HPTXR

32

|----- 34 [D] -----| 0745 - 1840

HPTXR

RTLT : 18h 42m 8s

1200 RTLT=18h 42m 18s

0000 RTLT=18h 42m 28s

VOYAGER 2

FDSL : 11AF

CCSL : B117  
TWNC : ON  
SB : OFF XB : LOW  
PYR : .05 / .10 / .25  
GYROS : AC ON

FDS MODE  
XB DATA RATE (MI)

CR-5T

160(32)

VOYAGER COVERAGE

----- ON CALL -----

NOTES

UTC: 7 8 9 10 11 12 13 14 15 16 17 18 19 20 21 22 23 0 1 2 3 4 5 6 7