

VOYAGER

Space Flight Operations Schedule (SFOS)

Issue Date: October 5, 2016

For the Period: 10/04/16 to 10/24/16 (16-280 – 16-298)

DSN OPSCHIEF (1) 230-102

DSOT (1) 230-102

*Zsarina.Bulchand@jpl.nasa.gov
 *gdyke@airmail.ftops.jpl.nasa.gov
 *John.M.Grant@jpl.nasa.gov
 *dmcclena@airmail.ftops.jpl.nasa.gov
 *pquach@airmail.ftops.jpl.nasa.gov
 *mrobles@airmail.ftops.jpl.nasa.gov
 *rwilliam@airmail.ftops.jpl.nasa.gov

OTHER

* KMassey@jgld.gdscc.nasa.gov
 * Belinda.Arroyo@jpl.nasa.gov
 *DL-DSSN-MPSETA@dsn.nasa.gov

SCIENCE

CRS *bryant@mail630.gsfc.nasa.gov
 LECP *r.decker@jhuapl.edu
 UVS *holburg@argus.lpl.arizona.edu
 MAG *u2mha@lepvox.gsfc.nasa.gov
 PLS *vgr@space.mit.edu
 PWS *wsk@space.physics.uiowa.edu
 *Leonard.F.Burlaga@nasa.gov
 *Donald-Gurnett@uiowa.edu

FLIGHT TEAM (14) 600-100

Dodd, S.
 Hall, J.
 Howard, S. (3)
 Ludwig, R. (2)
 Matsumoto, S.
 Medina
 Peralta, F.
 Weeks, T.
 Wong, R.
 Yang, L.
 Zottarelli, L.
 *odivers@san.rr.com

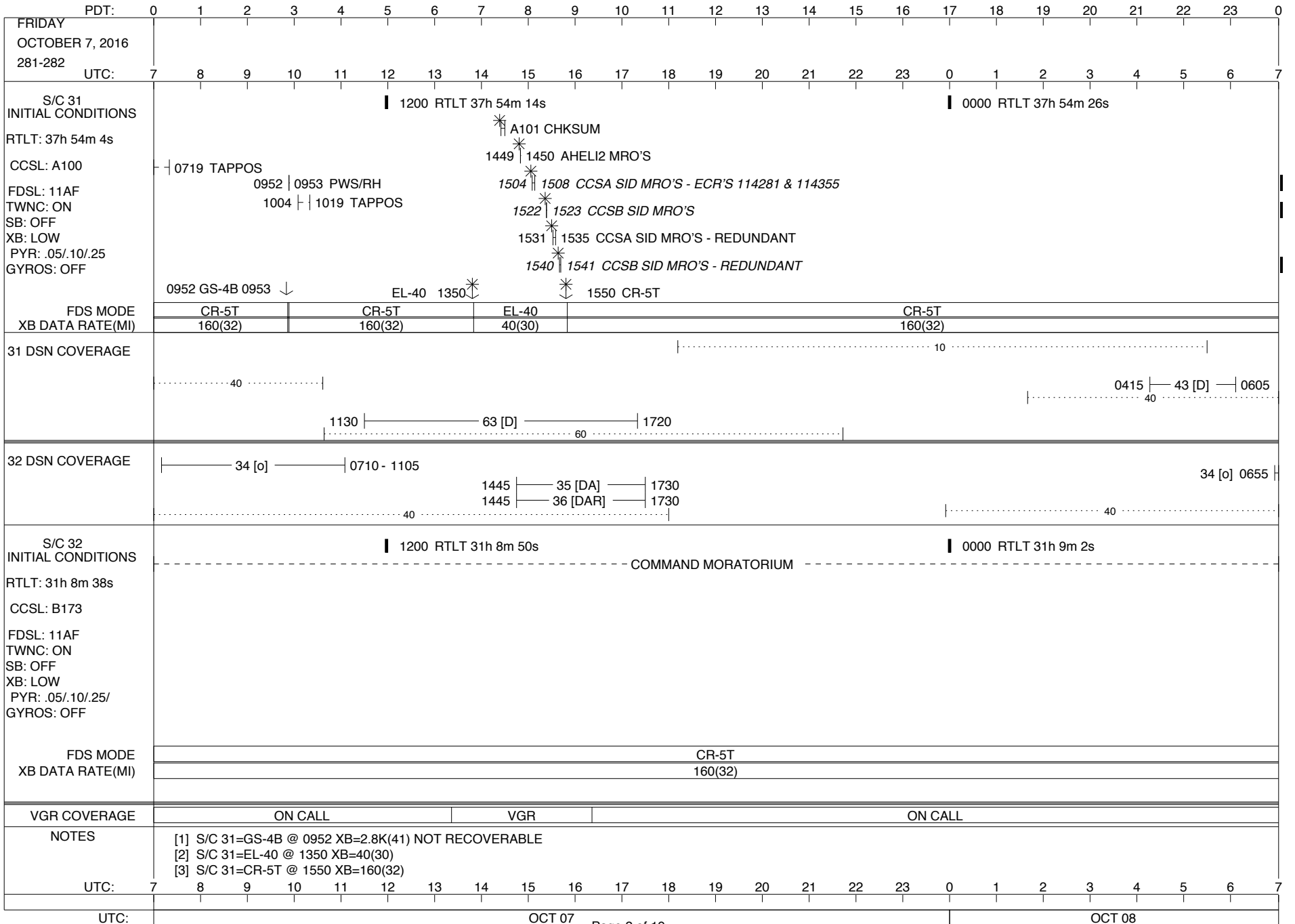
LEGEND:
 ▽ = R/T Command (Last chance or Contingency)
 ▼ = R/T Command (Scheduled)
 * = Result of R/T Command
 n = (where n = 1,2,3 ..) Special Note, see bottom of page
 A = Arrayed station
 B = BLF
 D = Downlink only pass
 H = High Power Transmitter
 R = Array Reference Antenna
 T = TLC Uplink
 U = Uplink only pass
 [o] = Ramp-through

*Electronic Copy Only
 (16 – Dist/N: Paper Copies)
 09/08/10

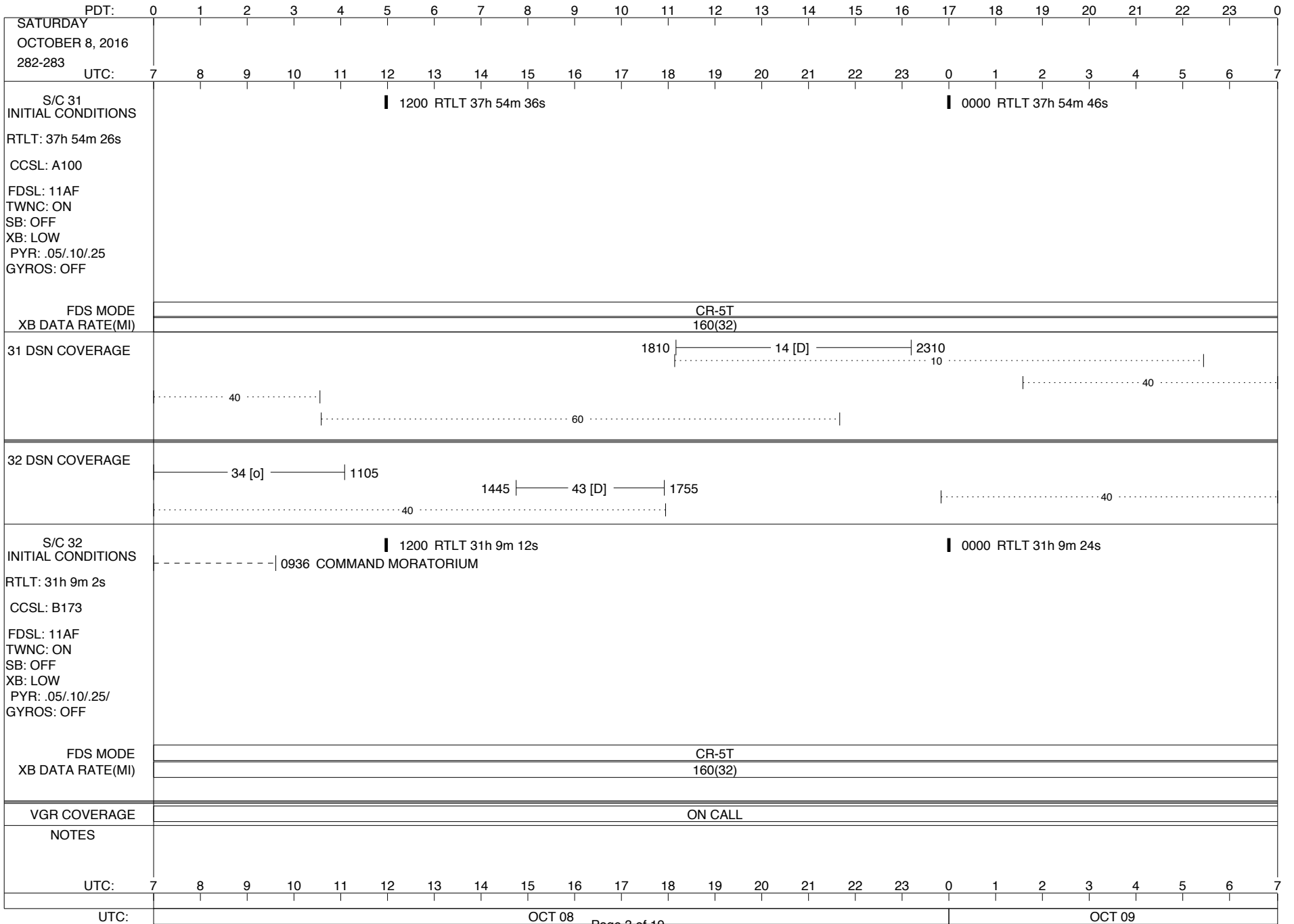
ISSUE DATE: 10/13/16 07:10

PDT:	0	1	2	3	4	5	6	7	8	9	10	11	12	13	14	15	16	17	18	19	20	21	22	23	0
THURSDAY OCTOBER 6, 2016 280-281																									
UTC:	7	8	9	10	11	12	13	14	15	16	17	18	19	20	21	22	23	0	1	2	3	4	5	6	7
S/C 31 INITIAL CONDITIONS RTLT: 37h 53m 42s CCSL: A100 FDSL: 11AF TWNC: ON SB: OFF XB: LOW PYR: .05/.10/.25 GYROS: OFF	1200 RTLT 37h 53m 52s												0000 RTLT 37h 54m 4s												
FDS MODE	CR-5T												CR-5T												
XB DATA RATE(MI)	160(32)												160(32)												
31 DSN COVERAGE												
40.....											40.....												
												
1530.....											63 [D].....												
60.....											2210.....												
32 DSN COVERAGE												
45 [D].....											0705 - 1105.....												
40.....											1450.....												
43 [D].....												
1800.....												
40.....												
S/C 32 INITIAL CONDITIONS RTLT: 31h 8m 16s CCSL: B173 FDSL: 11AF TWNC: ON SB: OFF XB: LOW PYR: .05/.10/.25/ GYROS: OFF	1200 RTLT 31h 8m 28s												0000 RTLT 31h 8m 38s												
FDS MODE	CR-5T												CR-5T												
XB DATA RATE(MI)	160(32)												160(32)												
VGR COVERAGE	ON CALL												ON CALL												
NOTES	[1] S/C 31=EL-40 @ 1455 XB=40(30) [2] S/C 31=CR-5T @ 1745 XB=160(32)																								
UTC:	7	8	9	10	11	12	13	14	15	16	17	18	19	20	21	22	23	0	1	2	3	4	5	6	7
UTC:	OCT 06												OCT 07												

ISSUE DATE: 10/13/16 07:10



ISSUE DATE: 10/13/16 07:10



ISSUE DATE: 10/13/16 07:10

PDT:	0	1	2	3	4	5	6	7	8	9	10	11	12	13	14	15	16	17	18	19	20	21	22	23	0	
SUNDAY OCTOBER 9, 2016 283-284	7	8	9	10	11	12	13	14	15	16	17	18	19	20	21	22	23	0	1	2	3	4	5	6	7	
S/C 31 INITIAL CONDITIONS RTLTL: 37h 54m 46s CCSL: A100 FDSL: 11AF TWNC: ON SB: OFF XB: LOW PYR: .05/.10/.25 GYROS: OFF	█ 1200 RTLTL 37h 54m 58s												█ 0000 RTLTL 37h 55m 8s													
	0950 1006 TAPPOS												1253 1254 PWS/RH 1304 1305 TAPPOS													
	↓ 1252 GS-4B 1254																									
FDS MODE	CR-5T												CR-5T													
XB DATA RATE(MI)	160(32)												160(32)													
31 DSN COVERAGE 40 10 0415 14 [D] 0520													
 1510 60 63 [D] 2155											 40													
32 DSN COVERAGE	0750 34 [D] 1100											 1350 43 [D] 1750													
 40 40													
S/C 32 INITIAL CONDITIONS RTLTL: 31h 9m 24s CCSL: B173 FDSL: 11AF TWNC: ON SB: OFF XB: LOW PYR: .05/.10/.25/ GYROS: OFF	█ 1200 RTLTL 31h 9m 36s												█ 0000 RTLTL 31h 9m 46s													
FDS MODE													CR-5T													
XB DATA RATE(MI)													160(32)													
VGR COVERAGE													ON CALL													
NOTES	[1] S/C 31=GS-4B @ 1252 XB=2.8K(41) NOT RECOVERABLE																									
UTC:	7	8	9	10	11	12	13	14	15	16	17	18	19	20	21	22	23	0	1	2	3	4	5	6	7	
UTC:	OCT 09													OCT 10												

ISSUE DATE: 10/13/16 07:10

PDT:	0	1	2	3	4	5	6	7	8	9	10	11	12	13	14	15	16	17	18	19	20	21	22	23	0	
MONDAY OCTOBER 10, 2016 284-285	7	8	9	10	11	12	13	14	15	16	17	18	19	20	21	22	23	0	1	2	3	4	5	6	7	
S/C 31 INITIAL CONDITIONS RTLTL: 37h 55m 8s CCSL: A100 FDSL: 11AF TWNC: ON SB: OFF XB: LOW PYR: .05/.10/.25 GYROS: OFF	1200 RTLTL 37h 55m 20s												0000 RTLTL 37h 55m 30s													
FDS MODE XB DATA RATE(MI)	CR-5T 160(32)																									
31 DSN COVERAGE	2005 ----- 24 [DAR] ----- 0005 2005 ----- 25 [DA] ----- 000540 ----- 10 ----- 40																									
32 DSN COVERAGE	0745 ----- 43 [o1] ----- 114040 ----- 40																									
S/C 32 INITIAL CONDITIONS RTLTL: 31h 9m 46s CCSL: B173 FDSL: 11AF TWNC: ON SB: OFF XB: LOW PYR: .05/.10/.25/ GYROS: OFF	1200 RTLTL 31h 9m 58s												0000 RTLTL 31h 10m 10s													
FDS MODE XB DATA RATE(MI)	CR-5T 160(32)																									
VGR COVERAGE	ON CALL																									
NOTES	[1] SC 32=GYRO COND MINI-SEQ BACKUP U/L TRACK																									
UTC:	7	8	9	10	11	12	13	14	15	16	17	18	19	20	21	22	23	0	1	2	3	4	5	6	7	
UTC:	OCT 10													OCT 11												

ISSUE DATE: 10/13/16 07:10

PDT:	0	1	2	3	4	5	6	7	8	9	10	11	12	13	14	15	16	17	18	19	20	21	22	23	0			
UTC:	7	8	9	10	11	12	13	14	15	16	17	18	19	20	21	22	23	0	1	2	3	4	5	6	7			
TUESDAY OCTOBER 11, 2016 285-286																												
S/C 31 INITIAL CONDITIONS RTLT: 37h 55m 30s CCSL: A100 FDSL: 11AF TWNC: ON SB: OFF XB: LOW PYR: .05/.10/.25 GYROS: OFF	1200 RTLT 37h 55m 40s												0000 RTLT 37h 55m 52s															
FDS MODE	CR-5T												CR-5T															
XB DATA RATE(MI)	160(32)												160(32)															
31 DSN COVERAGE	<p>2225 ----- 25 [DAR] ----- 0225 2225 ----- 26 [DA] ----- 0225</p> <p>40 ----- 1045 ----- 63 [D1] ----- 1500 ----- 40</p> <p>60</p>																											
32 DSN COVERAGE	<p>1005 ----- 45 [DA] ----- 1715 1035 ----- 36 [DAR] ----- 1715</p> <p>40</p> <p>40</p>																											
S/C 32 INITIAL CONDITIONS RTLT: 31h 10m 10s CCSL: B173 FDSL: 11AF TWNC: ON SB: OFF XB: LOW PYR: .05/.10/.25/ GYROS: OFF	1200 RTLT 31h 10m 20s												0000 RTLT 31h 10m 32s															
FDS MODE	CR-5T												CR-5T															
XB DATA RATE(MI)	160(32)												160(32)															
VGR COVERAGE	ON CALL																											
NOTES	<p>[1] A101 BACKUP U/L TRACK</p> <p>[2] S/C 31=GS-4B @ 0316 XB=2.8K(41) NOT RECOVERABLE</p>																											
UTC:	7	8	9	10	11	12	13	14	15	16	17	18	19	20	21	22	23	0	1	2	3	4	5	6	7			
UTC:	OCT 11														OCT 12													

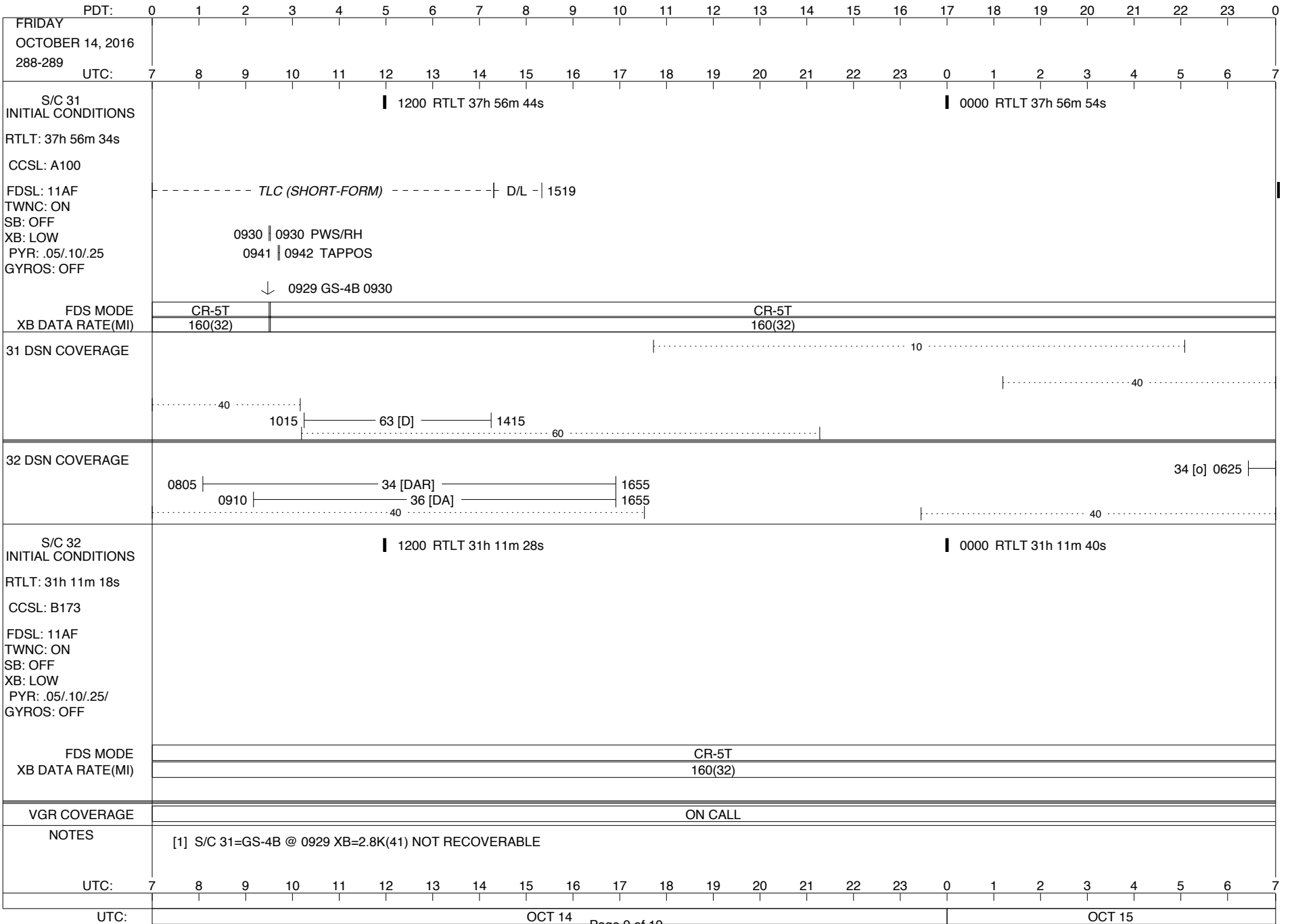
ISSUE DATE: 10/13/16 07:10

PDT:	0	1	2	3	4	5	6	7	8	9	10	11	12	13	14	15	16	17	18	19	20	21	22	23	0
WEDNESDAY OCTOBER 12, 2016 286-287																									
UTC:	7	8	9	10	11	12	13	14	15	16	17	18	19	20	21	22	23	0	1	2	3	4	5	6	7
S/C 31 INITIAL CONDITIONS RTLT: 37h 55m 52s CCSL: A100 FDSL: 11AF TWNC: ON SB: OFF XB: LOW PYR: .05/.10/.25 GYROS: OFF						█ 1200 RTLT 37h 56m 2s												█ 0000 RTLT 37h 56m 12s							
FDS MODE XB DATA RATE(MI)																									
31 DSN COVERAGE																									
32 DSN COVERAGE																									
S/C 32 INITIAL CONDITIONS RTLT: 31h 10m 32s CCSL: B173 FDSL: 11AF TWNC: ON SB: OFF XB: LOW PYR: .05/.10/.25/ GYROS: OFF						█ 1200 RTLT 31h 10m 44s																			
FDS MODE XB DATA RATE(MI)																									
VGR COVERAGE																									
NOTES																									
UTC:	7	8	9	10	11	12	13	14	15	16	17	18	19	20	21	22	23	0	1	2	3	4	5	6	7
UTC:																									

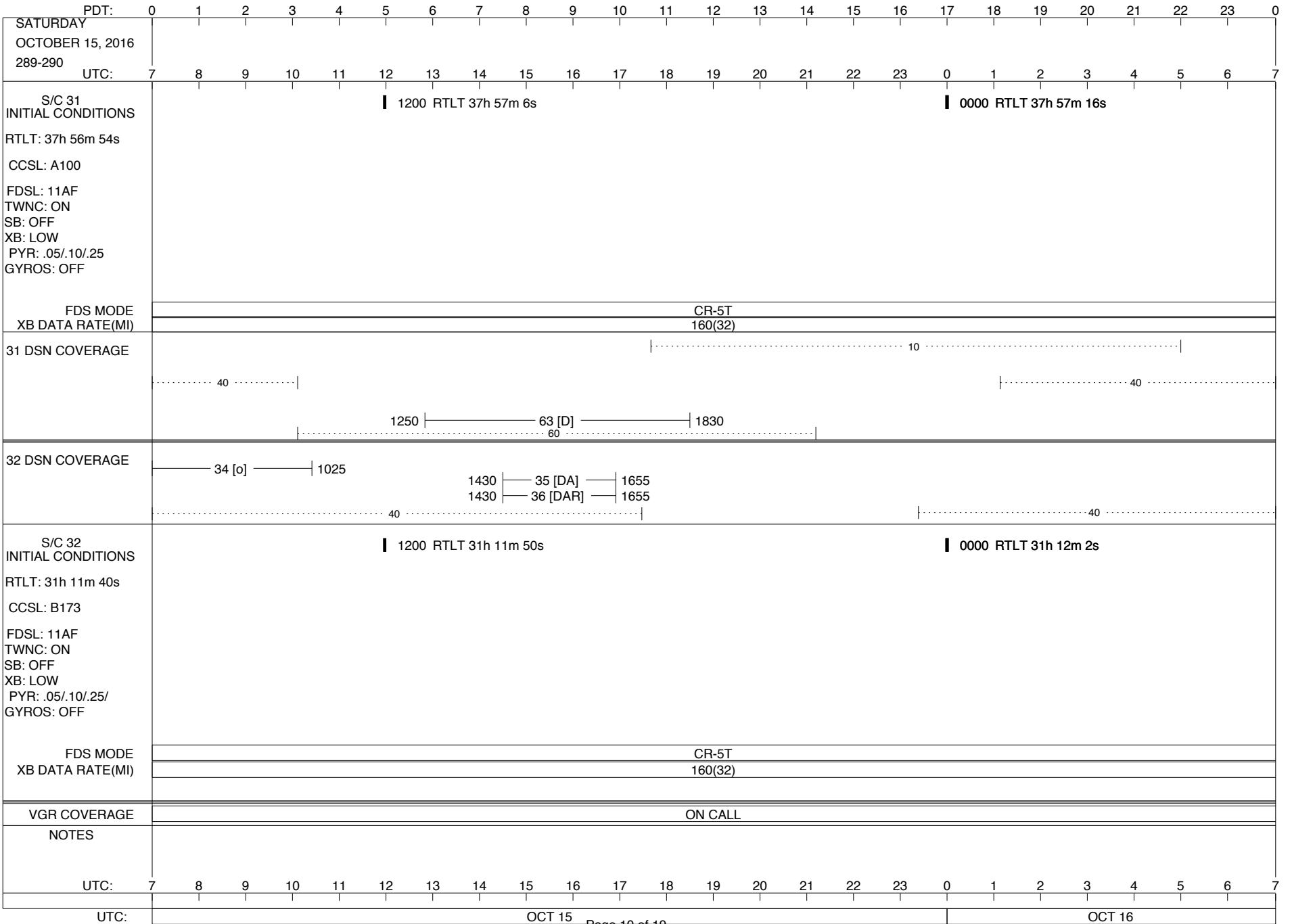
ISSUE DATE: 10/13/16 07:10

PDT:	0	1	2	3	4	5	6	7	8	9	10	11	12	13	14	15	16	17	18	19	20	21	22	23	0											
UTC:	7	8	9	10	11	12	13	14	15	16	17	18	19	20	21	22	23	0	1	2	3	4	5	6	7											
THURSDAY OCTOBER 13, 2016 287-288																																				
S/C 31 INITIAL CONDITIONS RTLT: 37h 56m 12s CCSL: A100 FDSL: 11AF TWNC: ON SB: OFF XB: LOW PYR: .05/.10/.25 GYROS: OFF	1200 RTLT 37h 56m 24s												0000 RTLT 37h 56m 34s																							
FDS MODE XB DATA RATE(MI)													CR-5T 160(32)																							
31 DSN COVERAGE	40														1950 24 [DAR] 2350		1950 25 [DA] 2350		10										40							
32 DSN COVERAGE	35 [D]				0715 - 1035				1350				43 [B]				1735				40															
S/C 32 INITIAL CONDITIONS RTLT: 31h 10m 54s CCSL: B173 FDSL: 11AF TWNC: ON SB: OFF XB: LOW PYR: .05/.10/.25/ GYROS: OFF	1200 RTLT 31h 11m 6s												0000 RTLT 31h 11m 18s																							
FDS MODE XB DATA RATE(MI)													CR-5T 160(32)																							
VGR COVERAGE	ON CALL												VGR				ON CALL																			
NOTES	▼ 1427 DUMMY (5 MIN BRACKETED 21:39)																																			
UTC:	7	8	9	10	11	12	13	14	15	16	17	18	19	20	21	22	23	0	1	2	3	4	5	6	7											
UTC:	OCT 13														OCT 14																					

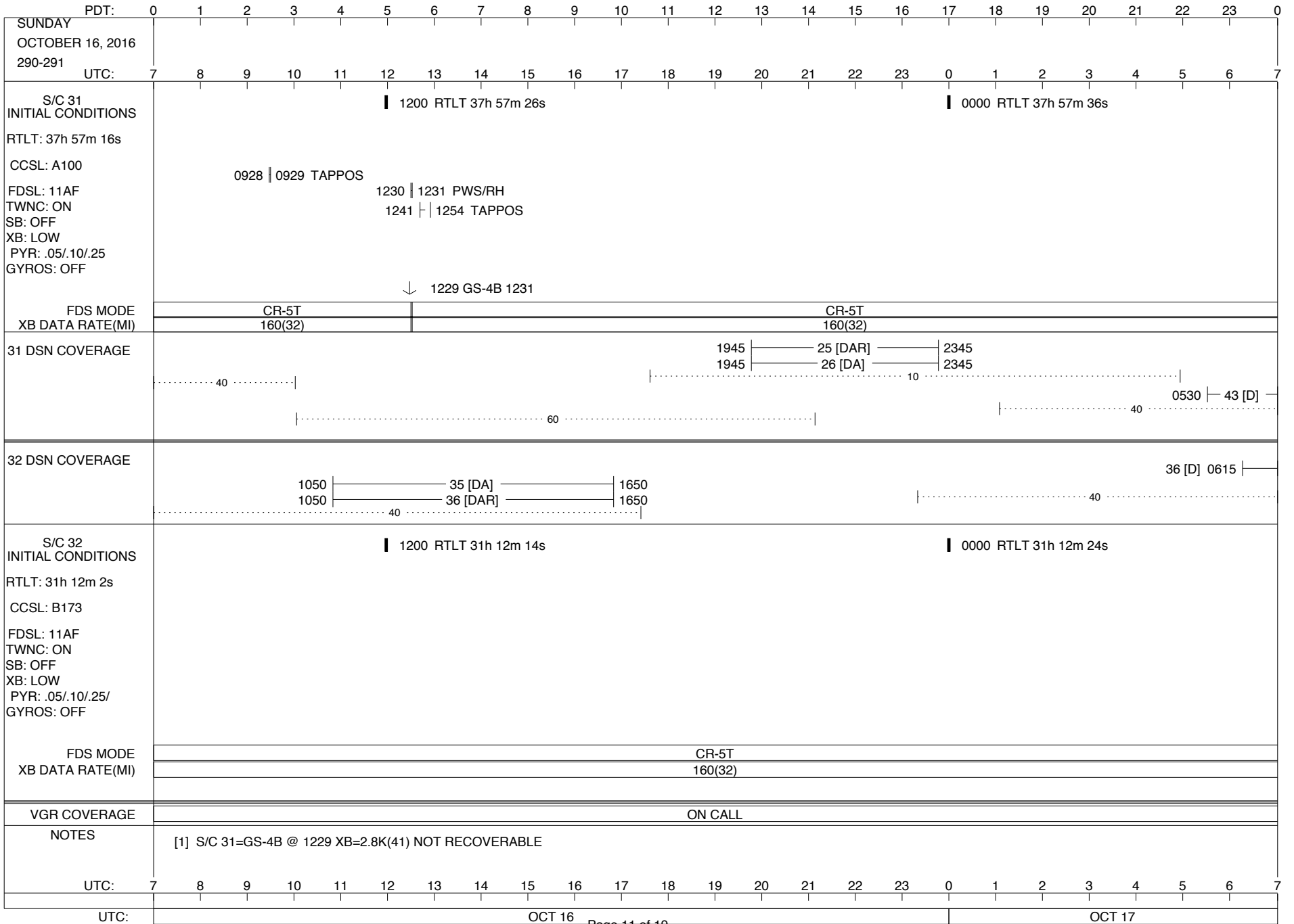
ISSUE DATE: 10/13/16 07:10



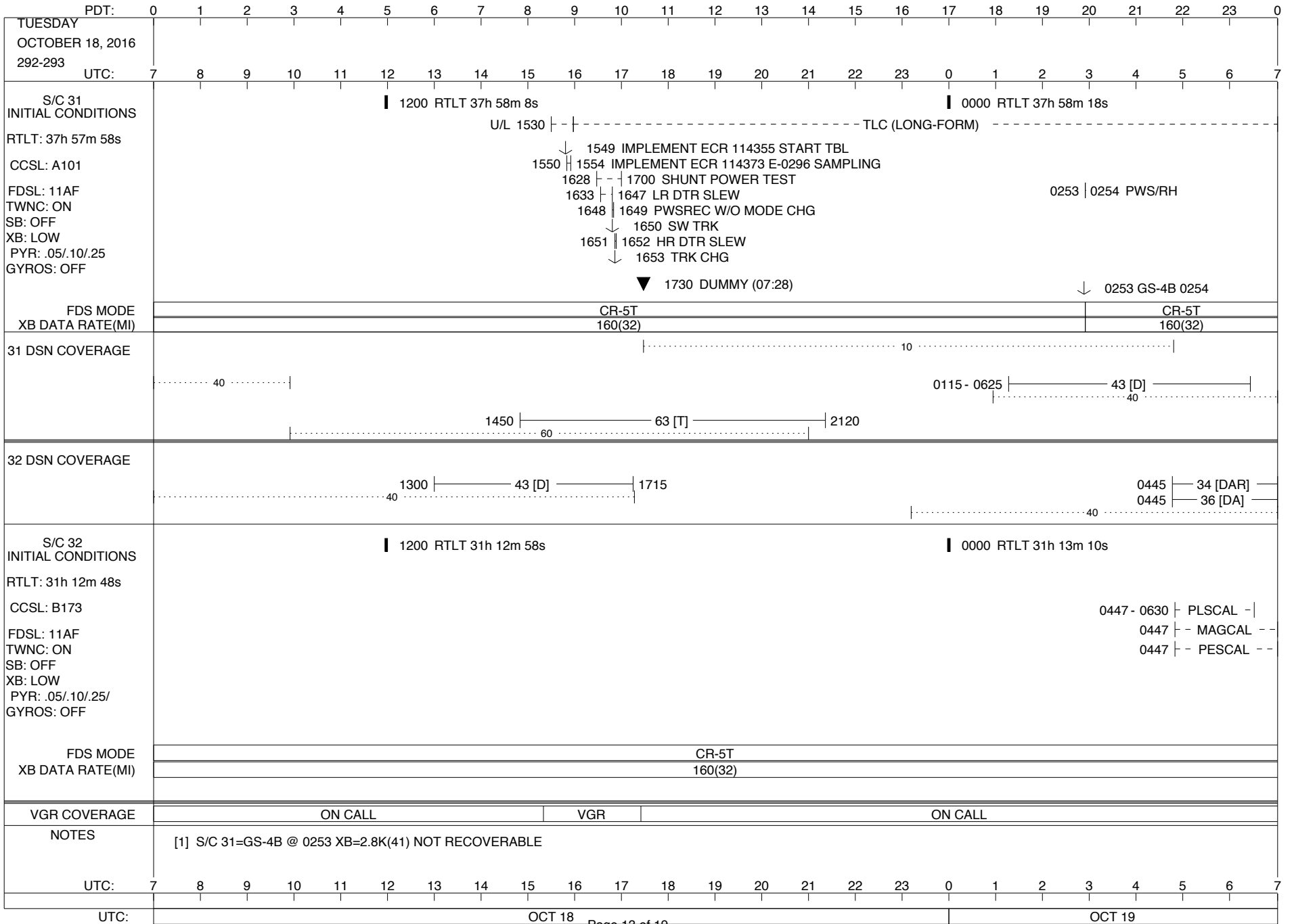
ISSUE DATE: 10/13/16 07:10



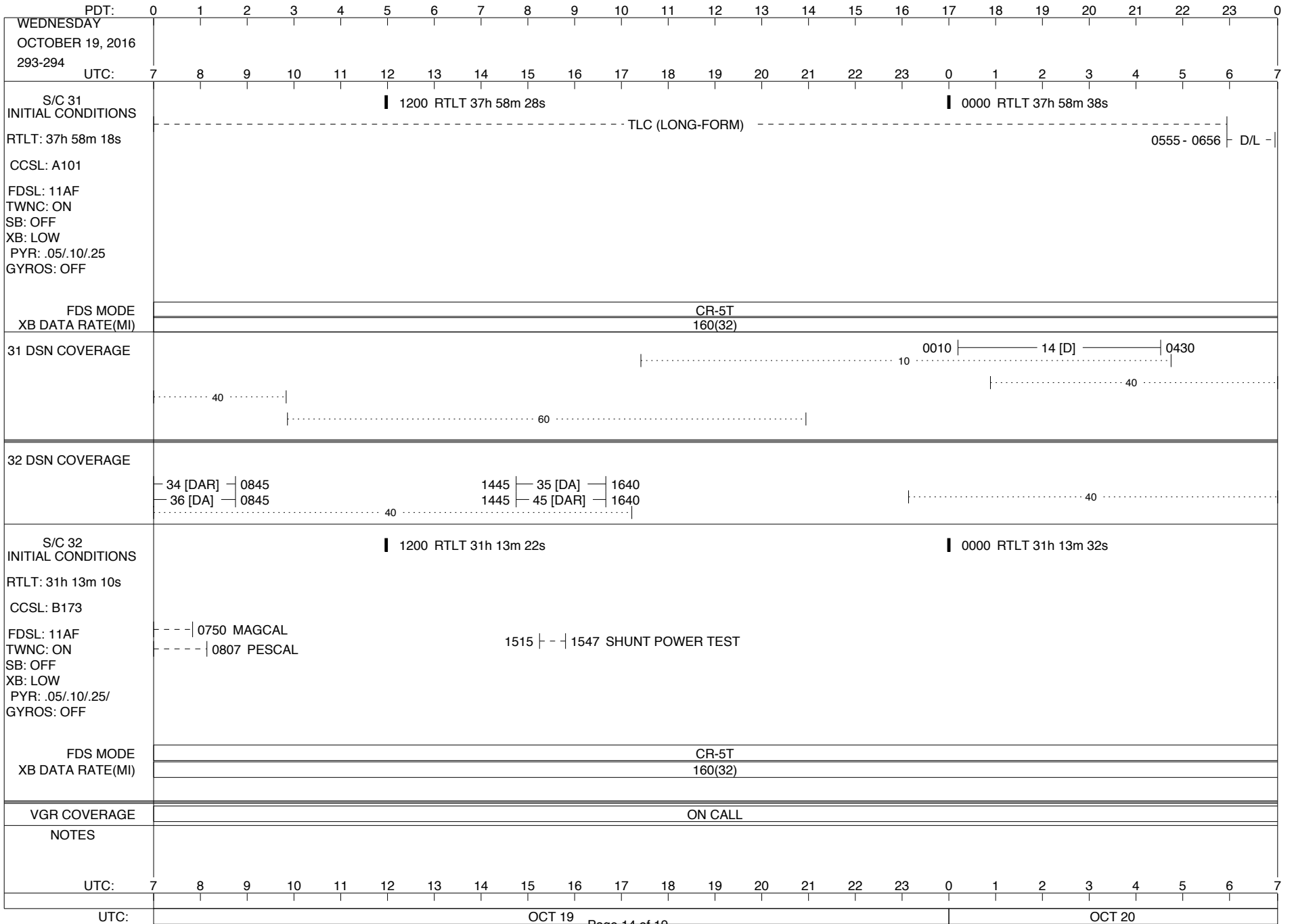
ISSUE DATE: 10/13/16 07:10



ISSUE DATE: 10/13/16 07:10



ISSUE DATE: 10/13/16 07:10



ISSUE DATE: 10/13/16 07:10

PDT:	0	1	2	3	4	5	6	7	8	9	10	11	12	13	14	15	16	17	18	19	20	21	22	23	0
THURSDAY OCTOBER 20, 2016 294-295																									
UTC:	7	8	9	10	11	12	13	14	15	16	17	18	19	20	21	22	23	0	1	2	3	4	5	6	7
S/C 31 INITIAL CONDITIONS RTLT: 37h 58m 38s CCSL: A101 FDSL: 11AF TWNC: ON SB: OFF XB: LOW PYR: .05/.10/.25 GYROS: OFF						█ 1200 RTLT 37h 58m 48s												█ 0000 RTLT 37h 58m 58s							
FDS MODE XB DATA RATE(MI)																									
31 DSN COVERAGE																									
32 DSN COVERAGE																									
S/C 32 INITIAL CONDITIONS RTLT: 31h 13m 32s CCSL: B173 FDSL: 11AF TWNC: ON SB: OFF XB: LOW PYR: .05/.10/.25/ GYROS: OFF						█ 1200 RTLT 31h 13m 44s												█ 0000 RTLT 31h 13m 54s							
FDS MODE XB DATA RATE(MI)																									
VGR COVERAGE																									
NOTES																									
UTC:	7	8	9	10	11	12	13	14	15	16	17	18	19	20	21	22	23	0	1	2	3	4	5	6	7
UTC:																									

TAPPOS 0604 | 0606

CR-5T
160(32)

2025 |-----| 14 [D] |-----| 0025

.....40.....|

|.....40.....|

|.....60.....|

0900 | 34 [o] | 1010

1320 |-----| 43 [B] |-----| 1705

.....40.....|

|.....40.....|

▼ 1402 DUMMY (5 MIN BRACKETED 21:16)

CR-5T
160(32)

ON CALL

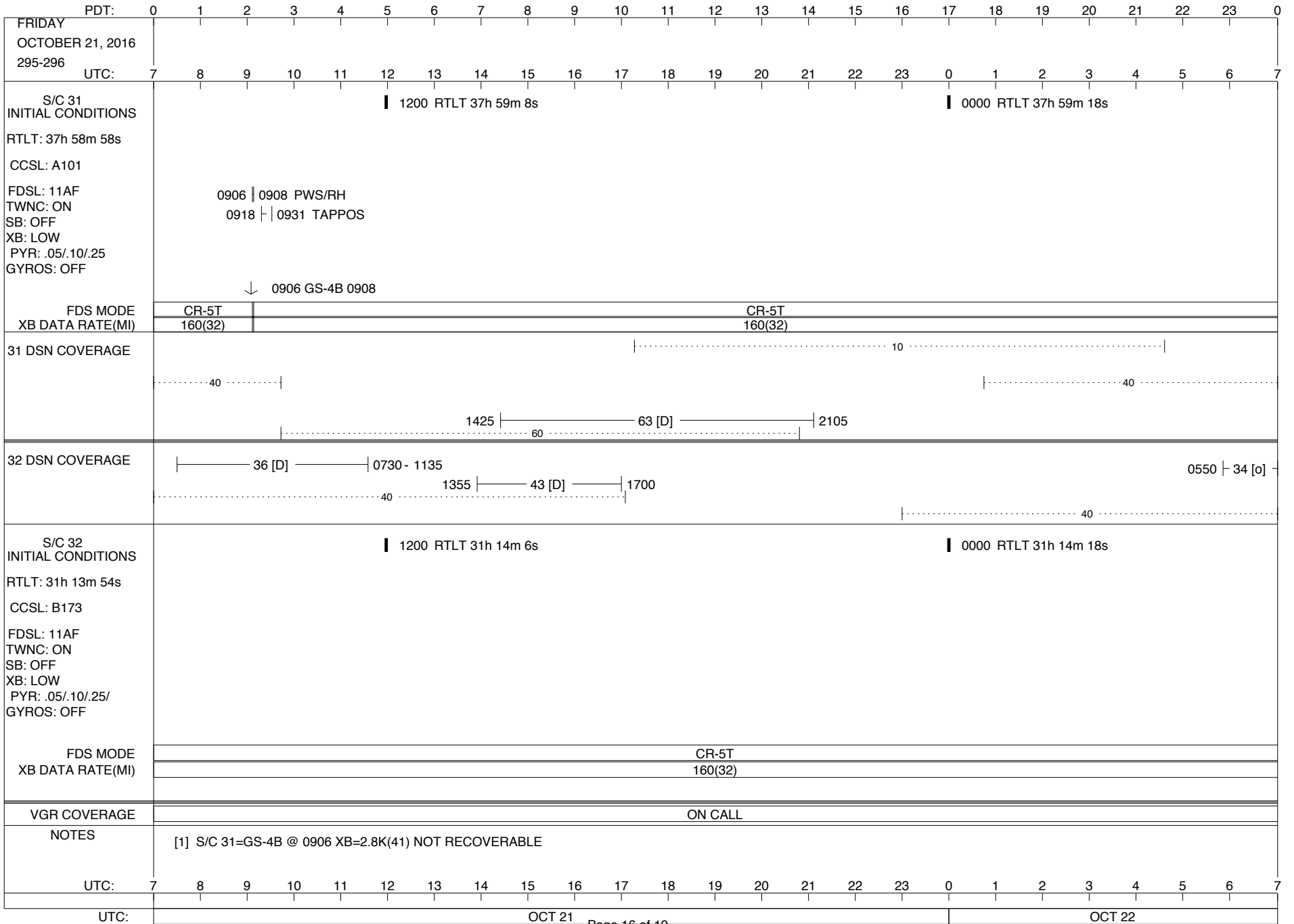
VGR

ON CALL

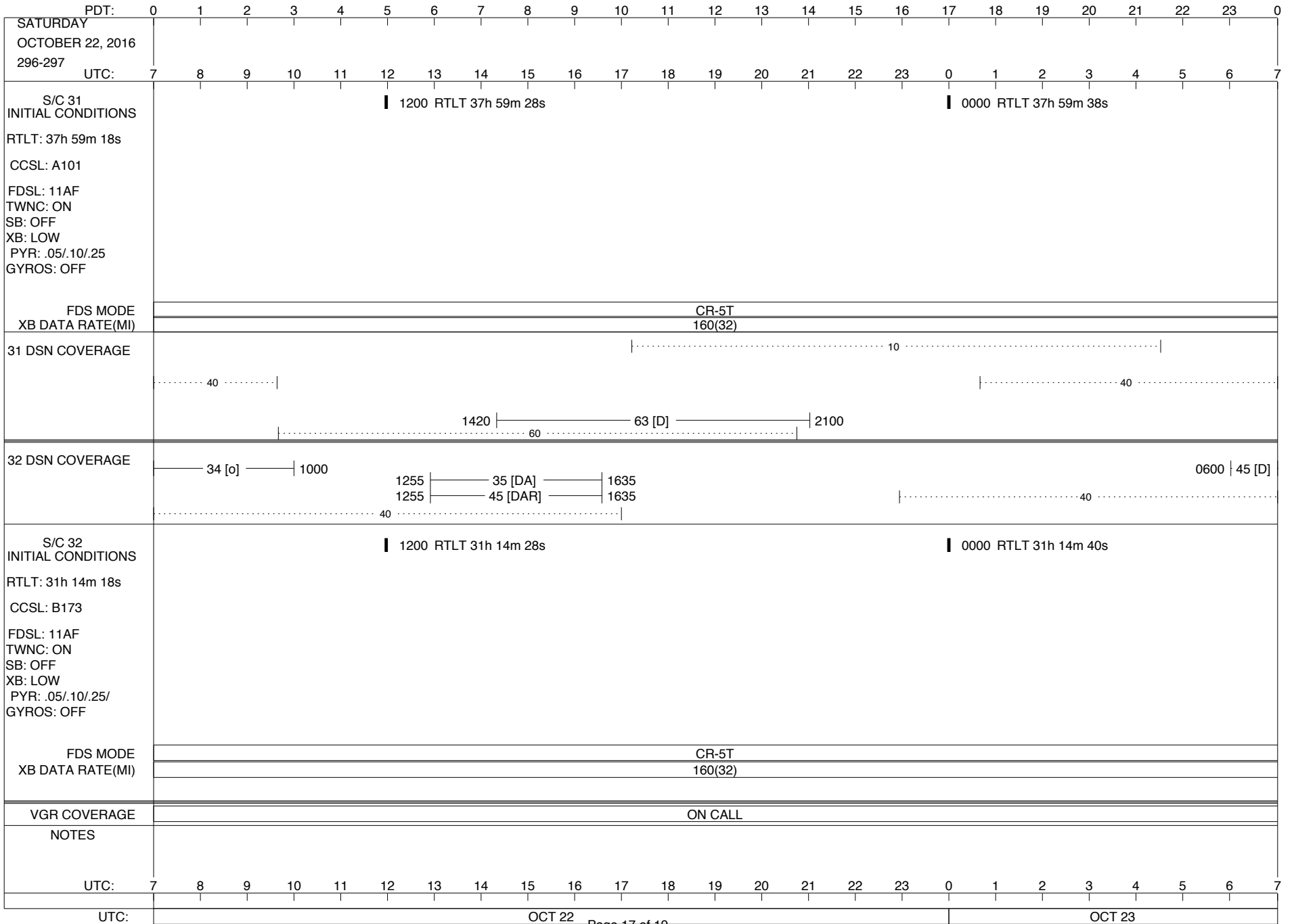
OCT 20

OCT 21

ISSUE DATE: 10/13/16 07:10



ISSUE DATE: 10/13/16 07:10



ISSUE DATE: 10/13/16 07:10

PDT:	0	1	2	3	4	5	6	7	8	9	10	11	12	13	14	15	16	17	18	19	20	21	22	23	0		
MONDAY OCTOBER 24, 2016 298-299																											
UTC:	7	8	9	10	11	12	13	14	15	16	17	18	19	20	21	22	23	0	1	2	3	4	5	6	7		
S/C 31 INITIAL CONDITIONS RTLT: 37h 59m 58s CCSL: A101 FDSL: 11AF TWNC: ON SB: OFF XB: LOW PYR: .05/.10/.25 GYROS: OFF	<p style="text-align: center;"> 1200 RTLT 38h 0m 6s</p>																										
FDS MODE XB DATA RATE(MI)														CR-5T 160(32)													
31 DSN COVERAGE	<p style="text-align: center;">.....40..... </p> <p style="text-align: center;">0935 ----- 63 [D] ----- 1335</p> <p style="text-align: center;">.....60..... </p>																										
32 DSN COVERAGE	<p style="text-align: center;">.....40..... </p> <p style="text-align: center;">1425 --- 35 [DA] --- 1620</p> <p style="text-align: center;">1425 --- 36 [DAR] --- 1620</p> <p style="text-align: center;">.....40..... </p>																										
S/C 32 INITIAL CONDITIONS RTLT: 31h 15m 2s CCSL: B173 FDSL: 11AF TWNC: ON SB: OFF XB: LOW PYR: .05/.10/.25/ GYROS: OFF	<p style="text-align: center;"> 1200 RTLT 31h 15m 14s</p>																										
FDS MODE XB DATA RATE(MI)														CR-5T 160(32)													
VGR COVERAGE	ON CALL																										
NOTES																											
UTC:	7	8	9	10	11	12	13	14	15	16	17	18	19	20	21	22	23	0	1	2	3	4	5	6	7		
UTC:	OCT 24													OCT 25													